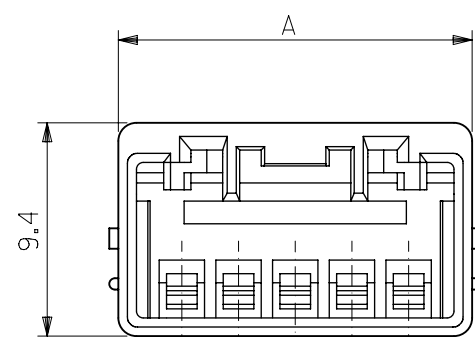
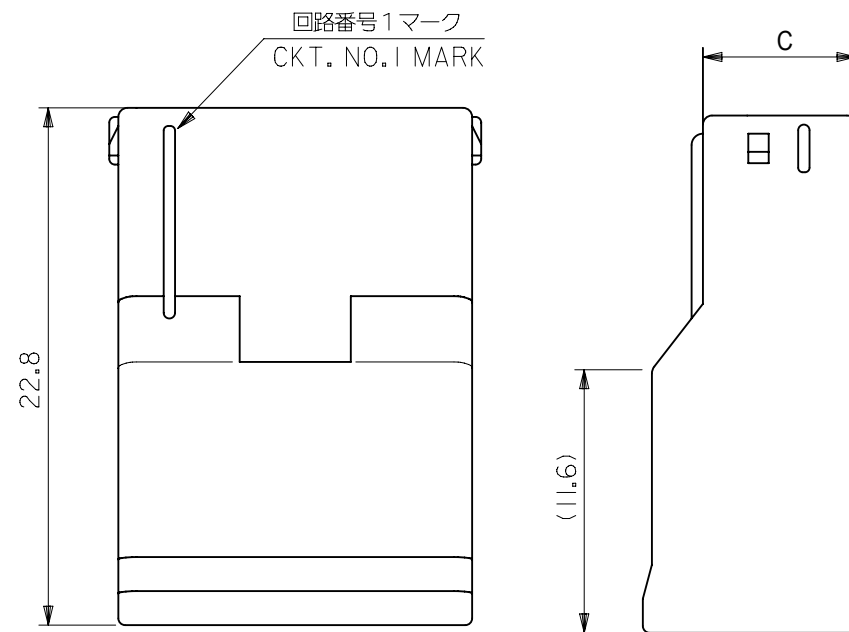
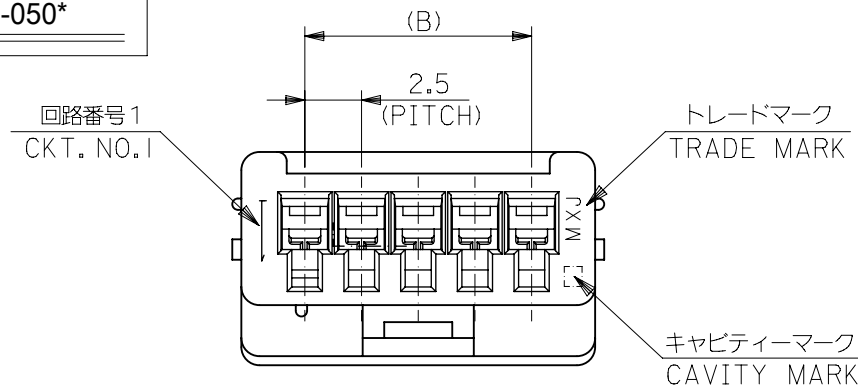
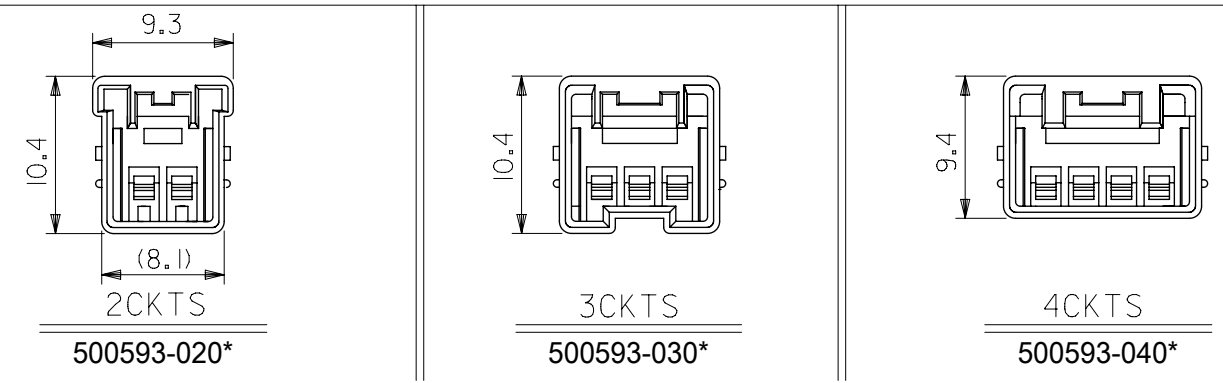


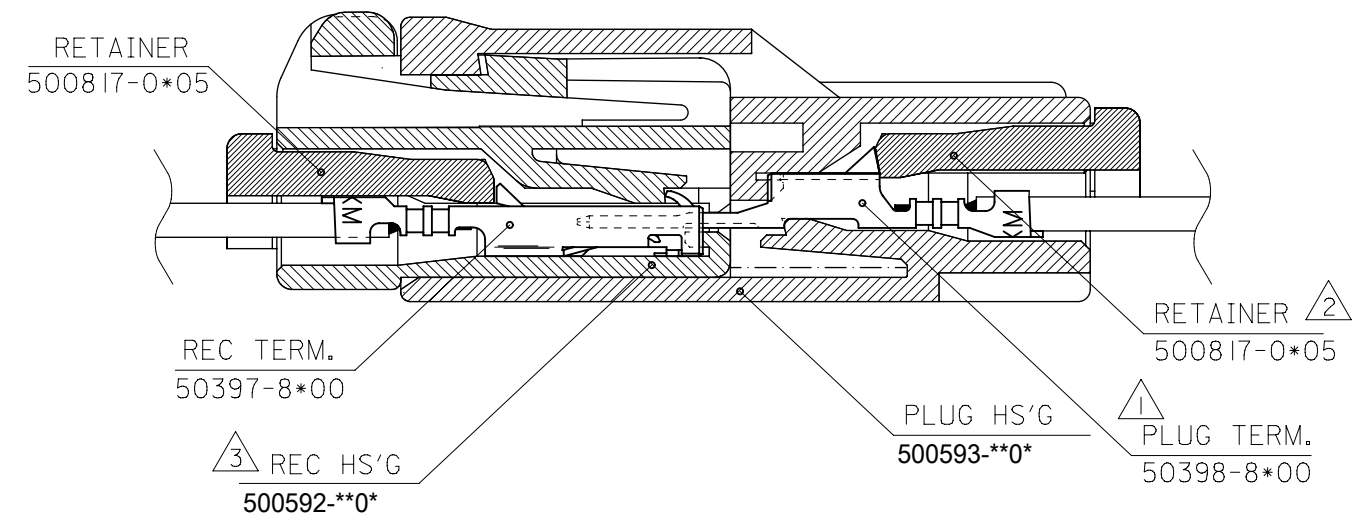
SHAPE OF  
500593-050\*



4極以下の極数レイアウト図  
LAYOUT OF 2/3/4CKTS.



ターミナル装着状態図  
TERMINAL ASSEMBLY DRAWING



注記  
NOTES

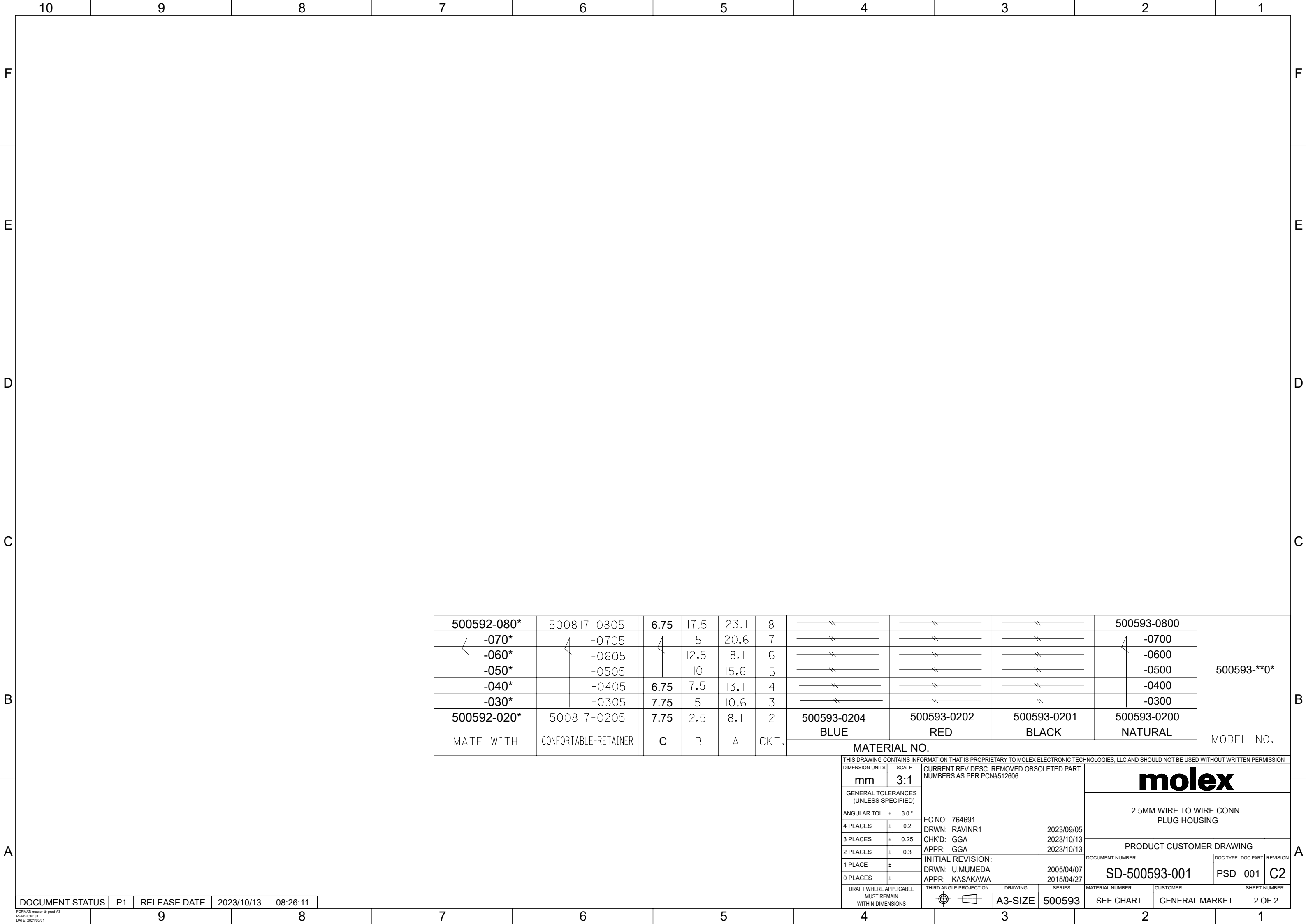
- ① 適合ターミナル：50398シリーズ  
APPLICABLE TERMINAL：50398 SERIES
- ② 適合リテーナー：500817シリーズ  
APPLICABLE RETAINER：500817 SERIES
- ③ 嵌合相手：500592シリーズ  
MATE WITH：500592 SERIES
- 4. 材質：PBT (UL94V-0)  
MATERIAL：PBT(UL94V-0)

5. MATERIAL NO.は以下の内容を示す。  
MATERIAL NO.:

500593-**0*	色
極数	COLOR
CKT	0: 自然色 NATURAL
	1: 黒 BLACK
	2: 赤 RED
	3: 黄色 YELLOW
	4: 青 BLUE
	6: 緑 GREEN

500593-\*\*0\* MODEL NO.

THIS DRAWING CONTAINS INFORMATION THAT IS PROPRIETARY TO MOLEX ELECTRONIC TECHNOLOGIES, LLC AND SHOULD NOT BE USED WITHOUT WRITTEN PERMISSION									
DIMENSION UNITS	SCALE	CURRENT REV DESC: REMOVED OBSOLETE PART NUMBERS AS PER PCN#512606.							
mm	1:1								
GENERAL TOLERANCES (UNLESS SPECIFIED)									
ANGULAR TOL	± 3.0°	<b>2.5MM WIRE TO WIRE CONN. PLUG HOUSING</b> PRODUCT CUSTOMER DRAWING							
4 PLACES	± 0.2								
3 PLACES	± 0.25								
2 PLACES	± 0.3								
1 PLACE	±								
0 PLACES	±	EC NO: 764691		DRWN: RAVINR1		2023/09/05		2023/10/13	
DRAFT WHERE APPLICABLE MUST REMAIN WITHIN DIMENSIONS		THIRD ANGLE PROJECTION		DRAWING		SERIES		MATERIAL NUMBER	
				A3-SIZE		500593		SEE CHART	
DOCUMENT STATUS		P1		RELEASE DATE		2023/10/13		08:26:11	
DOCUMENT NUMBER		PSD		DOC PART		001		REVISION	
SD-500593-001		GENERAL MARKET		1 OF 2		C2			



500592-080*	500817-0805	6.75	17.5	23.1	8	— // —	— // —	— // —	500593-0800	500593-***
∠ -070*	∠ -0705	∠	15	20.6	7	— // —	— // —	— // —	∠ -0700	
∠ -060*	∠ -0605	∠	12.5	18.1	6	— // —	— // —	— // —	∠ -0600	
∠ -050*	∠ -0505		10	15.6	5	— // —	— // —	— // —	∠ -0500	
∠ -040*	∠ -0405	6.75	7.5	13.1	4	— // —	— // —	— // —	∠ -0400	
∠ -030*	∠ -0305	7.75	5	10.6	3	— // —	— // —	— // —	∠ -0300	
500592-020*	500817-0205	7.75	2.5	8.1	2	500593-0204	500593-0202	500593-0201	500593-0200	MODEL NO.
MATE WITH	CONFORTABLE-RETAINER	C	B	A	CKT.	BLUE	RED	BLACK	NATURAL	

THIS DRAWING CONTAINS INFORMATION THAT IS PROPRIETARY TO MOLEX ELECTRONIC TECHNOLOGIES, LLC AND SHOULD NOT BE USED WITHOUT WRITTEN PERMISSION

DIMENSION UNITS	SCALE	CURRENT REV DESC: REMOVED OBSOLETE PART NUMBERS AS PER PCN#512606.	<b>molex</b>		
mm	3:1				
GENERAL TOLERANCES (UNLESS SPECIFIED)		EC NO: 764691 DRWN: RAVINR1 2023/09/05 CHK'D: GGA 2023/10/13 APPR: GGA 2023/10/13 INITIAL REVISION: DRWN: U.MUMEDA 2005/04/07 APPR: KASAKAWA 2015/04/27	2.5MM WIRE TO WIRE CONN. PLUG HOUSING		
ANGULAR TOL	± 3.0 °		PRODUCT CUSTOMER DRAWING		
4 PLACES	± 0.2		DOCUMENT NUMBER		
3 PLACES	± 0.25		SD-500593-001		
2 PLACES	± 0.3		DOC TYPE		
1 PLACE	±		PSD		
0 PLACES	±	DOC PART			
DRAFT WHERE APPLICABLE MUST REMAIN WITHIN DIMENSIONS		THIRD ANGLE PROJECTION		DOC PART	
		DRAWING		REVISION	
		A3-SIZE		C2	
		SERIES		SHEET NUMBER	
		500593		2 OF 2	
		MATERIAL NUMBER		CUSTOMER	
		SEE CHART		GENERAL MARKET	