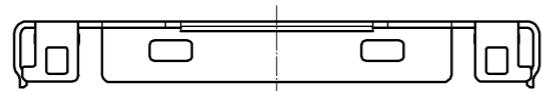
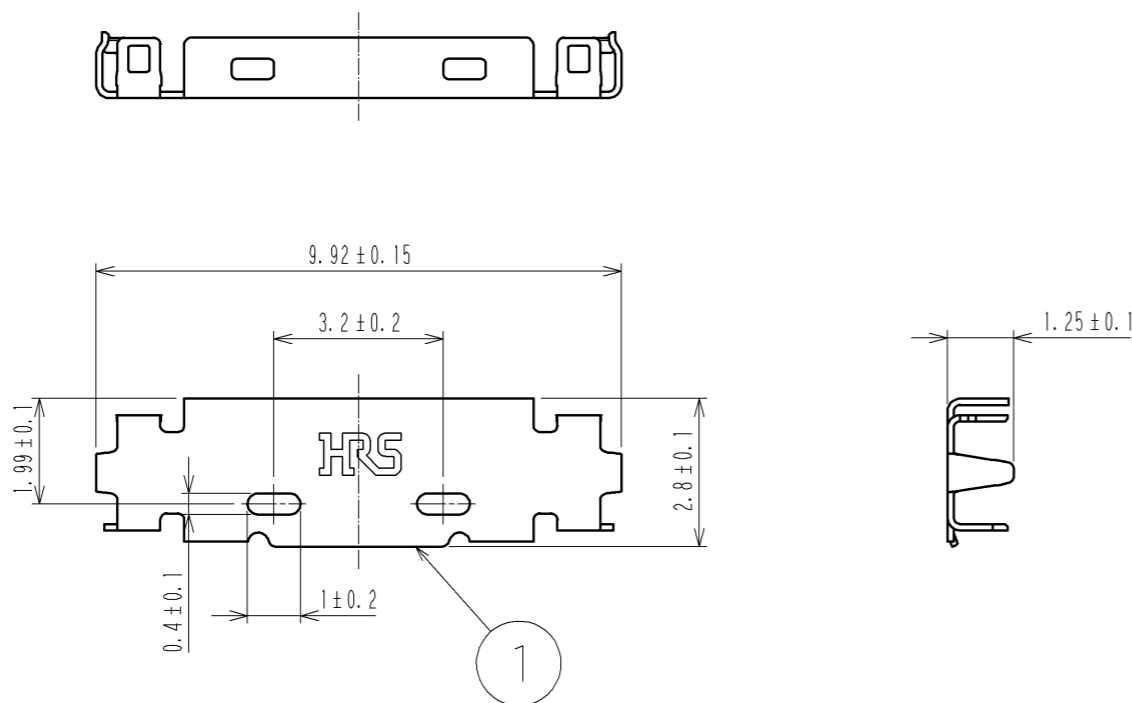
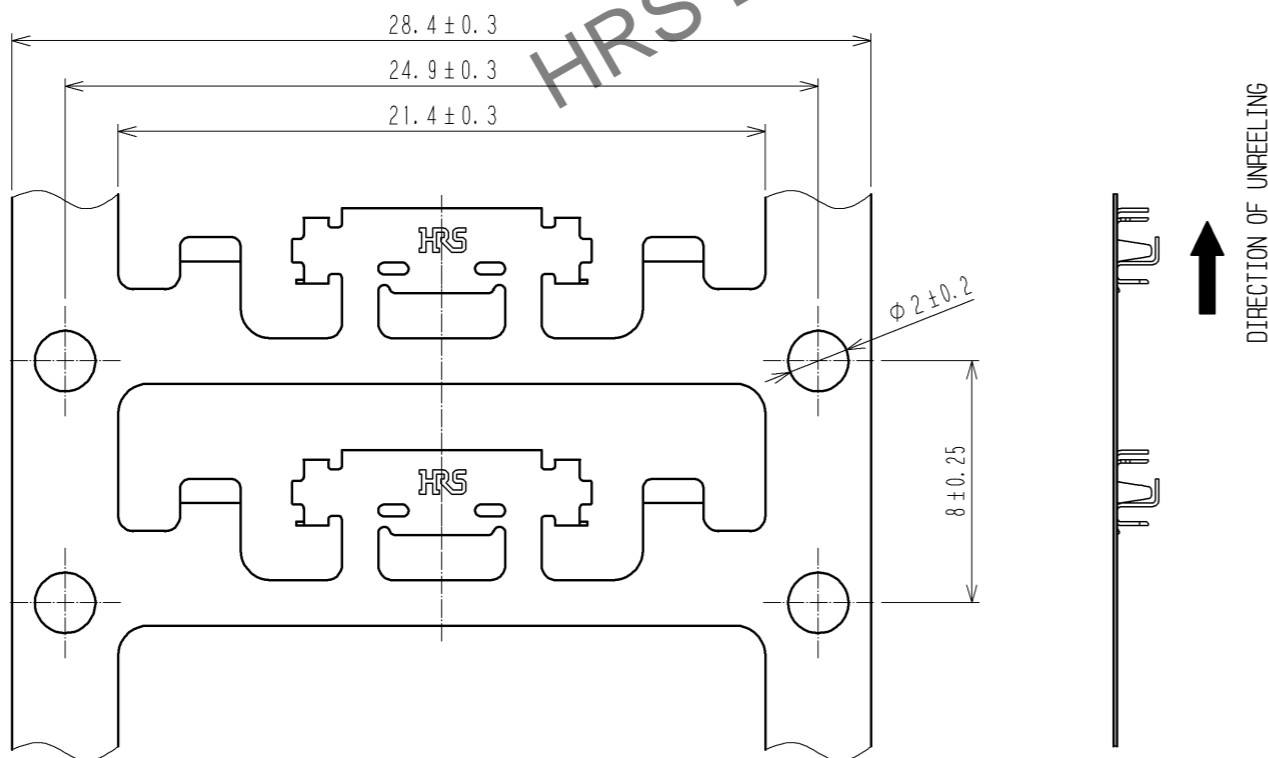


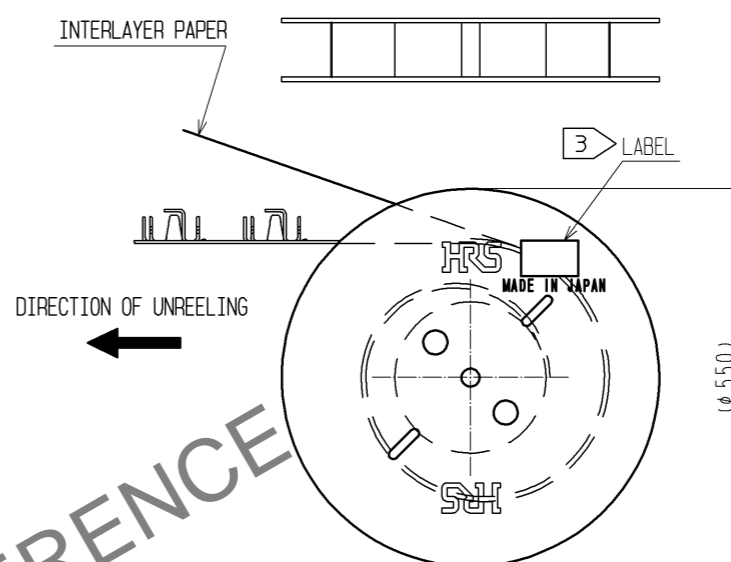
Jun.1.2024 Copyright 2024 HIROSE ELECTRIC CO., LTD. All Rights Reserved.
 In case of consideration for using Automotive equipment / device which demand high reliability, kindly contact our sales window correspondents.



△ CAREER STATE DRAWING(FREE)



REEL STATE DRAWING(FREE)



NOTES 1. PER REEL : 10000 COMPARTMENTS
 2. THE ASSEMBLY IS COMPLETED BY COMBINING TWO PARTS[CONNECTOR UNIT, AND METAL SHIELDING]. REFER TO THE TABLE FOR EACH ITEM No., PART NAME, PART No AND CODE No.

ITEM No.	PART NAME	PART No.	CODE No.
-	CONNECTOR UNIT	DF36C-15P-0.4SD△△	CL662-4035-2-00△△
1	METAL SHIELDING	DF36A-15P-SHL	CL662-4511-7-00△

③ LABEL DETAILS

HRS		INSPECTION 検査
CODE No. 品名コード	CL662-4511-7	
PART NO. 品名	DF36A-15P-SHL	
QTY 数量	10,000 PCS	
PECULIAR 仕様		
Lot No		
SPLICE 継ぎ目		

NO.	MATERIAL	FINISH . REMARKS	NO.	MATERIAL	FINISH . REMARKS
			1	PHOSPHOR BRONZE	WHOLE AREA : Sn PLATING 1μm min UNDER PLATING : Cu PLATING 0.2μm min

UNITS mm	SCALE FREE	COUNT 4	DESCRIPTION OF REVISIONS DIS-H-003435	DESIGNED HY. SHIOZAWA	CHECKED HK. UMEHARA	DATE 08.11.05
HRS	HIROSE ELECTRIC CO., LTD.	APPROVED : TS. SAKATA 08.05.12	CHECED : HK. UMEHARA 08.05.10	DESIGNED : HY. SHIOZAWA 08.05.09	DRAWN : SI. ISHII 08.05.09	DRAWING NO. EDC3-317913-00
						PART NO. DF36A-15P-SHL
						CODE NO. CL662-4511-7-00