


# CAMBLOCK PLUS

## 5mm Pitch Pluggable Rising Clamp Terminal Blocks

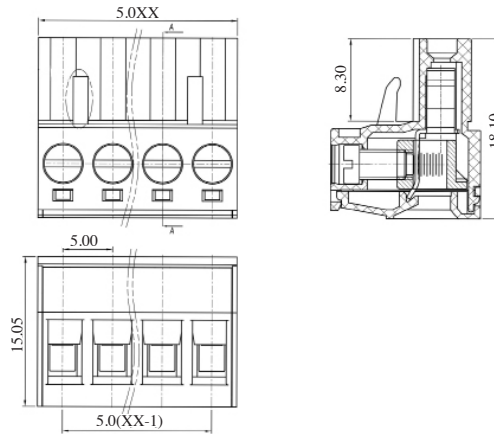
- 2-12 pole solid block
- Pluggable male-female connectors
- Open & closed headers
- Horizontal & vertical female plug styles
- Polarised mouldings
- Moulded in green UL94-V0 flame retardant PA66
- Professional rising clamp terminals
- 1.5mm<sup>2</sup> (28-14AWG) solid & stranded cable
- Anti solder wicking
- Captive screws
- Guided pin alignment
-  approved

### SPECIFICATION

Rating	15A/300V
Insulation resistance	500MΩ/500V
Withstand Voltage	AC2000V/1min
Contact Resistance	20mΩ (max)
Working Temperature	-40°C to 105+°C
Mouldings	UL94-V0 Flame retardant PA66
Pin/Terminal	Tin plated brass
Rising Clamp	Brass, nickel plated
Screw/Torque	M3 Steel, zinc plated 0.5Nm
Recommended PCB hole size	ø1.7mm

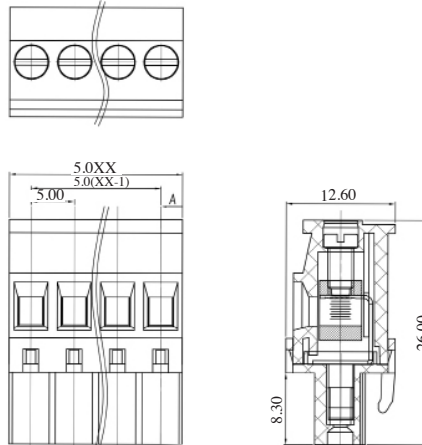
### Female connector

TYPE NO.	POLES	LENGTH	CTBP9200
CTBP9200/2	2	10mm	
CTBP9200/3	3	15mm	
CTBP9200/4	4	20mm	
CTBP9200/5	5	25mm	
CTBP9200/6	6	30mm	
CTBP9200/7	7	35mm	
CTBP9200/8	8	40mm	
CTBP9200/9	9	45mm	
CTBP9200/10	10	50mm	
CTBP9200/11	11	55mm	
CTBP9200/12	12	60mm	



### Female connector vertical (standard)

TYPE NO.	POLES	LENGTH	CTBP92VG/S
CTBP92VG/2S	2	10mm	
CTBP92VG/3S	3	15mm	
CTBP92VG/4S	4	20mm	
CTBP92VG/5S	5	25mm	
CTBP92VG/6S	6	30mm	
CTBP92VG/7S	7	35mm	
CTBP92VG/8S	8	40mm	
CTBP92VG/9S	9	45mm	
CTBP92VG/10S	10	50mm	
CTBP92VG/11S	11	55mm	
CTBP92VG/12S	12	60mm	



### Female connector vertical (reversed)

TYPE NO.	POLES	LENGTH	CTBP92VG/R
CTBP92VG/2R	2	10mm	
CTBP92VG/3R	3	15mm	
CTBP92VG/4R	4	20mm	
CTBP92VG/5R	5	25mm	
CTBP92VG/6R	6	30mm	
CTBP92VG/7R	7	35mm	
CTBP92VG/8R	8	40mm	
CTBP92VG/9R	9	45mm	
CTBP92VG/10R	10	50mm	
CTBP92VG/11R	11	55mm	
CTBP92VG/12R	12	60mm	

