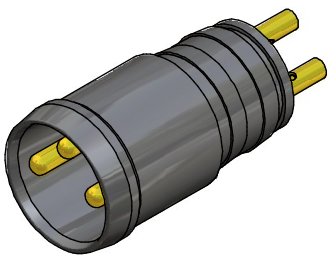
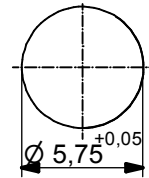


**Technical specification:**

Rated voltage: IEC 61076-2-101	3pos 4pos 60 V 30V
Current rating: IEC 61076-2-101	3pol 4pol 4A bei 40°C 3A bei 40°C
Insulation resistance: IEC 60512-2	>=10 GΩ
Pollution degree: IEC 60664-1	3/2
Degree of protection: IEC 60529	IP 67, in mated condition
Temperature range: IEC 60664-1	-30°C ... +105°C
Mating cycles: IEC 60512-9a	<=100

**Materials:**

Contact:	CuZn
Contact plating:	Nickel, gold plated
Contact carrier:	PA GF, UL 94



Directive 2002/95/EC  
„RoHS“  
Compliant

Part no:	Description:	Pos
42-01004	SAL - 8 - ESP3 - L	3
42-01006	SAL - 8 - ESP4 - L	4

DO NOT ALTER CAD DRAWING BY HAND	Index b 31.08.09 fro	dim. in mm	title:		
	tolerance:		<b>Male socket M8x1 with solder cup</b>		
	THIS DRAWING MAY NOT BE COPIED OR REPRODUCED IN ANY WAY, AND MAY NOT BE PASSED ON TO A THIRD PARTY WITHOUT WRITTEN PERMISSION. OWNERSHIP AND COPYRIGHT OF CONEC GmbH	drawn	date	name	dwg no: <span style="float: right;">Inventor 10</span>
		appd.	15.10.08	Mankopf	
<b>CONEC</b> <sup>©</sup>			<b>42K1A096</b>		
			part no:		