

CABLE-D37F/FLK50/6,0M/ETHA - Cable



1222438

<https://www.phoenixcontact.com/us/products/1222438>

Please be informed that the data shown in this PDF document is generated from our online catalog. Please find the complete data in the user documentation. Our general terms of use for downloads are valid.



Round cable set; controller: Siemens SIMATIC® ET 200SP HA; connection 1: D-SUB socket strip (1x 37-position); connection 2: IDC/FLK socket strip (1x 50-position); cable length: 6 m

Commercial data

Item number	1222438
Packing unit	1 pc
Minimum order quantity	1 pc
Note	Made to order (non-returnable)
Sales key	C421
Product key	CK226S
GTIN	4063151311742
Weight per piece (including packing)	1,093 g
Weight per piece (excluding packing)	1,085.595 g
Customs tariff number	85444290
Country of origin	DE

CABLE-D37F/FLK50/6,0M/ETHA - Cable



1222438

<https://www.phoenixcontact.com/us/products/1222438>

Technical data

Product properties

Product type	System cable
--------------	--------------

Data management status

Article revision	03
------------------	----

Environmental and real-life conditions

Ambient conditions

Degree of protection	IP00
Degree of protection (Installation location)	≥ IP54 (Installation location)
Ambient temperature (operation)	-40 °C ... 70 °C (fixed installation) -10 °C ... 70 °C (flexible installation)
Ambient temperature (storage/transport)	-40 °C ... 80 °C
Altitude	≤ 2000 m

Electrical properties

Operating voltage (AC)	≤ 30 V AC
Operating voltage (DC)	≤ 60 V DC
Nominal operating mode	100% operating factor
Current (Per path, 50°C)	≤ 1 A (Uncoiled, see derating)
Current (Per path, 70°C)	≤ 0.6 A (Uncoiled, see derating)

Supported controller SIEMENS ET 200SP HA

Suitable terminal block	6DL1193-6TP00-0BH1
	6DL1193-6TP00-0DH1
	6DL1193-6TP00-0BM1
	6DL1193-6TP00-0DM1
Suitable I/O module	6DL1131-6BL00-0PH1 (Terminal Block H1/M1)
	6DL1132-6BL00-0PH1 (Terminal Block H1/M1)

Cable/line

Cable length	6 m
--------------	-----

50X0.14 [PVC]

UL AWM Style	2464/1061
Number of positions	50
Shielded	no
Cable type	50X0.14 [PVC]
Conductor type	Round cable set
Conductor structure signal line	7x 0.16 mm
AWG signal line	26
Conductor cross section	50x 0.14 mm ²

CABLE-D37F/FLK50/6,0M/ETHA - Cable



1222438

<https://www.phoenixcontact.com/us/products/1222438>

Wire diameter incl. insulation	1 mm ±0.03 mm
External cable diameter	10.30 mm ±0.4 mm
Outer sheath, material	Semi-rigid PVC
External sheath, color	gray
Conductor material	Tin-plated Cu litz wires
Cable resistance	≤ 145 Ω/km (20 °C)
Insulation resistance	≥ 20 MΩ*km (20 °C)
Smallest bending radius, fixed installation	86 mm
Smallest bending radius, movable installation	161 mm
Dynamic load capacity (bending)	Max. bending cycles: 5000 (at a radius of ≥ 15x outside diameter)
Halogen-free	no
Flame resistance	IEC 60332-1-2 (raw cable)
	VDE 0842, Part 332-1-2 (raw cable)
	IEC 60332-3-22 (raw cable)
	UL VW-1
	CSA FT-1
Resistance to oil	can withstand occasional splashes (raw cable)
Cable type	Cable for one module

Color code

black	IDC/FLK50 (1) = D-SUB37 (17)
brown	IDC/FLK50 (2) = D-SUB37 (17)
red	IDC/FLK50 (3) = D-SUB37 (1)
orange	IDC/FLK50 (4) = D-SUB37 (2)
yellow	IDC/FLK50 (5) = D-SUB37 (3)
green	IDC/FLK50 (6) = D-SUB37 (4)
blue	IDC/FLK50 (7) = D-SUB37 (5)
violet	IDC/FLK50 (8) = D-SUB37 (6)
gray	IDC/FLK50 (9) = D-SUB37 (7)
white	IDC/FLK50 (10) = D-SUB37 (8)
white-black	IDC/FLK50 (11) = D-SUB37 (36)
white-brown	IDC/FLK50 (12) = D-SUB37 (36)
white-red	IDC/FLK50 (13) = D-SUB37 (17)
white-orange	IDC/FLK50 (14) = D-SUB37 (17)
white-yellow	IDC/FLK50 (15) = D-SUB37 (9)
white-green	IDC/FLK50 (16) = D-SUB37 (10)
white-blue	IDC/FLK50 (17) = D-SUB37 (11)
white-violet	IDC/FLK50 (18) = D-SUB37 (12)
white-gray	IDC/FLK50 (19) = D-SUB37 (13)
brown-black	IDC/FLK50 (20) = D-SUB37 (14)
brown-red	IDC/FLK50 (21) = D-SUB37 (15)
brown-orange	IDC/FLK50 (22) = D-SUB37 (16)
brown-yellow	IDC/FLK50 (23) = D-SUB37 (36)

CABLE-D37F/FLK50/6,0M/ETHA - Cable



1222438

<https://www.phoenixcontact.com/us/products/1222438>

brown-green	IDC/FLK50 (24) = D-SUB37 (36)
brown-blue	IDC/FLK50 (25) = D-SUB37 (18)
brown-violet	IDC/FLK50 (26) = D-SUB37 (18)
brown-gray	IDC/FLK50 (27) = D-SUB37 (20)
brown-white	IDC/FLK50 (28) = D-SUB37 (21)
green-black	IDC/FLK50 (29) = D-SUB37 (22)
green-brown	IDC/FLK50 (30) = D-SUB37 (23)
green-red	IDC/FLK50 (31) = D-SUB37 (24)
green-orange	IDC/FLK50 (32) = D-SUB37 (25)
green-blue	IDC/FLK50 (33) = D-SUB37 (26)
green-violet	IDC/FLK50 (34) = D-SUB37 (27)
green-gray	IDC/FLK50 (35) = D-SUB37 (37)
green-white	IDC/FLK50 (36) = D-SUB37 (37)
yellow-black	IDC/FLK50 (37) = D-SUB37 (18)
yellow-brown	IDC/FLK50 (38) = D-SUB37 (18)
yellow-red	IDC/FLK50 (39) = D-SUB37 (28)
yellow-orange	IDC/FLK50 (40) = D-SUB37 (29)
yellow-blue	IDC/FLK50 (41) = D-SUB37 (30)
yellow-violet	IDC/FLK50 (42) = D-SUB37 (31)
yellow-gray	IDC/FLK50 (43) = D-SUB37 (32)
yellow-white	IDC/FLK50 (44) = D-SUB37 (33)
gray-black	IDC/FLK50 (45) = D-SUB37 (34)
gray-brown	IDC/FLK50 (46) = D-SUB37 (35)
gray-red	IDC/FLK50 (47) = D-SUB37 (37)
gray-orange	IDC/FLK50 (48) = D-SUB37 (37)

Connection data

Connection 1

Connection in acc. with standard	IEC 60807-2
	DIN 41652
Connection method	D-SUB socket strip
Screw thread	UNC 4-40
	M2,5
Number of connections	1
Number of positions	37
Tightening torque	0.2 Nm
Insertion/withdrawal cycles	> 200
Pitch	2.77 mm

Connection 2

Connection in acc. with standard	based on IEC 60603-13
Connection method	IDC/FLK socket strip
Number of connections	1
Number of positions	50

CABLE-D37F/FLK50/6,0M/ETHA - Cable



1222438

<https://www.phoenixcontact.com/us/products/1222438>

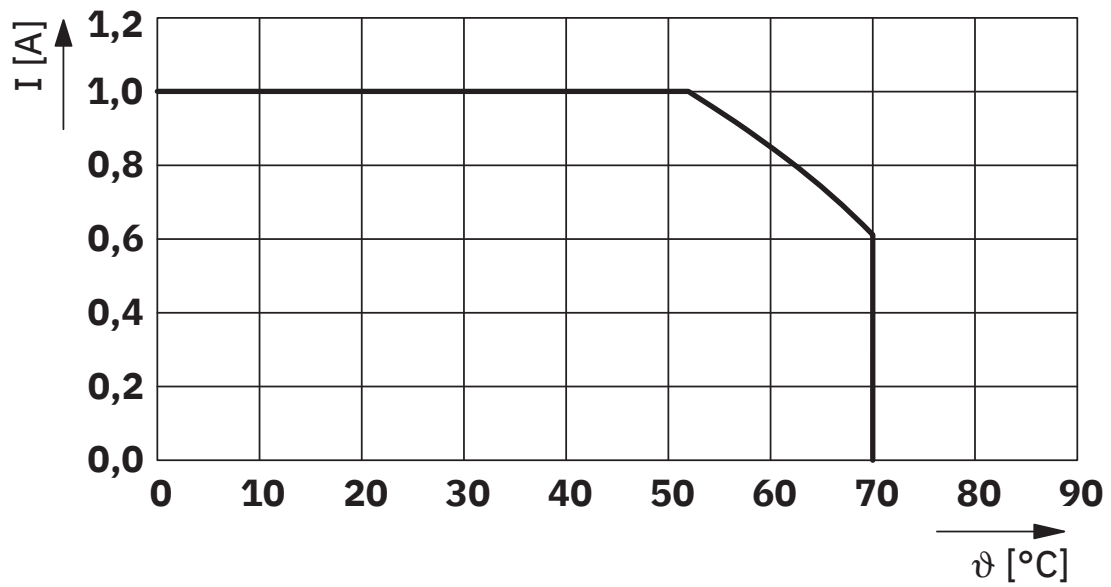
Insertion/withdrawal cycles	> 50
Pitch	2.54 mm

Notes

Notes on operation	For proper use, the specifications of the installation directive (see Downloads) must be observed. For applications or use with third-party products, the specifications, and the safety and warning instructions of the respective third-party manufacturer must also be met.
--------------------	--

Drawings

Diagram



Maximum permissible current per path in uncoiled state

CABLE-D37F/FLK50/6,0M/ETHA - Cable



1222438

<https://www.phoenixcontact.com/us/products/1222438>

Approvals

To download certificates, visit the product detail page: <https://www.phoenixcontact.com/us/products/1222438>



EAC

Approval ID: RU*-DE.HB*35.B00385



UL Listed

Approval ID: E238705

	Nominal voltage U_N	Nominal current I_N	Cross section AWG	Cross section mm^2
	125 V	1 A	-	-



cUL Listed

Approval ID: E238705

	Nominal voltage U_N	Nominal current I_N	Cross section AWG	Cross section mm^2
	125 V	1 A	-	-

cULus Listed

CABLE-D37F/FLK50/6,0M/ETHA - Cable



1222438

<https://www.phoenixcontact.com/us/products/1222438>

Classifications

ECLASS

ECLASS-11.0	27242220
ECLASS-12.0	27242220
ECLASS-13.0	27242220

ETIM

ETIM 9.0	EC000237
----------	----------

UNSPSC

UNSPSC 21.0	26121600
-------------	----------

CABLE-D37F/FLK50/6,0M/ETHA - Cable



1222438

<https://www.phoenixcontact.com/us/products/1222438>

Environmental product compliance

EU RoHS

Fulfills EU RoHS substance requirements	Yes
Exemption	6(c)

China RoHS

Environment friendly use period (EFUP)	EFUP-50
	An article-related China RoHS declaration table can be found in the download area for the respective article under "Manufacturer declaration". For all articles with EFUP-E, no China RoHS declaration table issued and required.

EU REACH SVHC

REACH candidate substance (CAS No.)	Lead(CAS: 7439-92-1)
SCIP	bffb12ba-6737-4955-9291-39293c96e198

CABLE-D37F/FLK50/6,0M/ETHA - Cable



1222438

<https://www.phoenixcontact.com/us/products/1222438>

Accessories

FLKM-PA-D37/ETHA - Front adapter

1076338

<https://www.phoenixcontact.com/us/products/1076338>

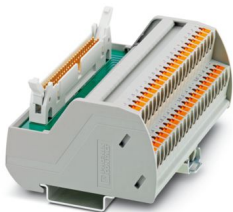


VARIOFACE front adapter for Siemens SIMATIC® ET 200SP HA, with a 37-pos. D-SUB male strip for digital 24 V DC and analog peripheral modules, max. 32 channels can be connected

VIP-2/PT/FLK50/PLC - Passive module

2903803

<https://www.phoenixcontact.com/us/products/2903803>



VARIOFACE interface module, with push-in connection, for 32 channels

CABLE-D37F/FLK50/6,0M/ETHA - Cable

1222438

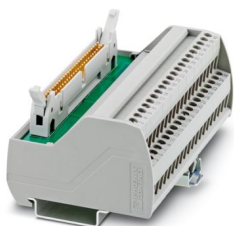
<https://www.phoenixcontact.com/us/products/1222438>



VIP-2/SC/FLK50/PLC - Passive module

2315227

<https://www.phoenixcontact.com/us/products/2315227>

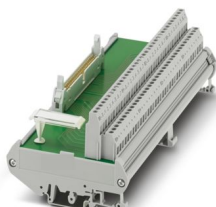


VARIOFACE interface module for 32 channels

FLKM 50/32P/PLC - Passive module

2291121

<https://www.phoenixcontact.com/us/products/2291121>



VARIOFACE interface module, for 32 channels, each with an additional terminal block per signal for a common plus potential

CABLE-D37F/FLK50/6,0M/ETHA - Cable

1222438

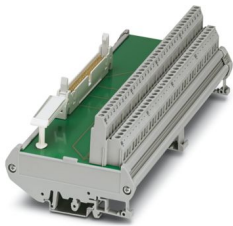
<https://www.phoenixcontact.com/us/products/1222438>



FLKM 50/32M/PLC - Passive module

2289719

<https://www.phoenixcontact.com/us/products/2289719>

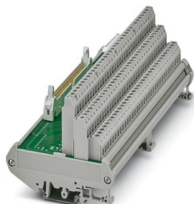


VARIOFACE interface module, for 32 channels, each with an additional terminal block per signal for a common minus potential

FLKMS 50/32IM/PLC - Passive module

2284523

<https://www.phoenixcontact.com/us/products/2284523>



VARIOFACE sensor module, for connecting 32 p-n-p sensors

CABLE-D37F/FLK50/6,0M/ETHA - Cable

1222438

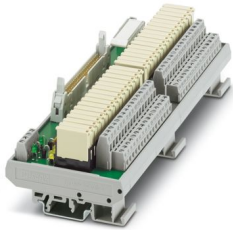
<https://www.phoenixcontact.com/us/products/1222438>



UMK-32 RM/MR-G24/1/PLC - Active module

2979472

<https://www.phoenixcontact.com/us/products/2979472>



VARIOFACE output module, with 32 miniature relays, 1 N/O contact each, plugged, for 24 V DC (incl. relay)

UM-32 RM/RT-G24/21/PLC - Active module

2968373

<https://www.phoenixcontact.com/us/products/2968373>



VARIOFACE output module, with 32 miniature relays, 1 changeover contact, plugged, for 24 V DC (including relays)

CABLE-D37F/FLK50/6,0M/ETHA - Cable

1222438

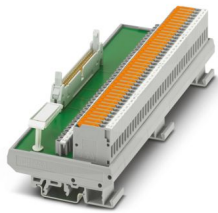
<https://www.phoenixcontact.com/us/products/1222438>



FLKM 50/KDS3-MT/PPA/PLC - Passive module

2290614

<https://www.phoenixcontact.com/us/products/2290614>



VARIOFACE interface module, for 32 channels with knife disconnect terminal blocks and test sockets to the peripherals and the system

Phoenix Contact 2024 © - all rights reserved

<https://www.phoenixcontact.com>

Phoenix Contact USA
586 Fulling Mill Road
Middletown, PA 17057, United States
(+717) 944-1300
info@phoenixcon.com