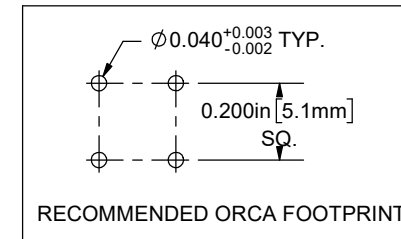
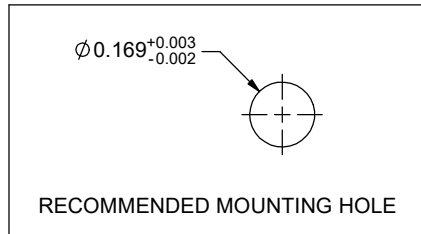
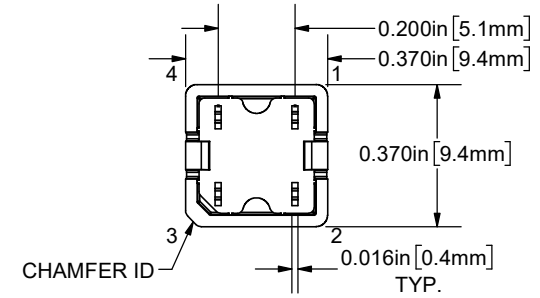
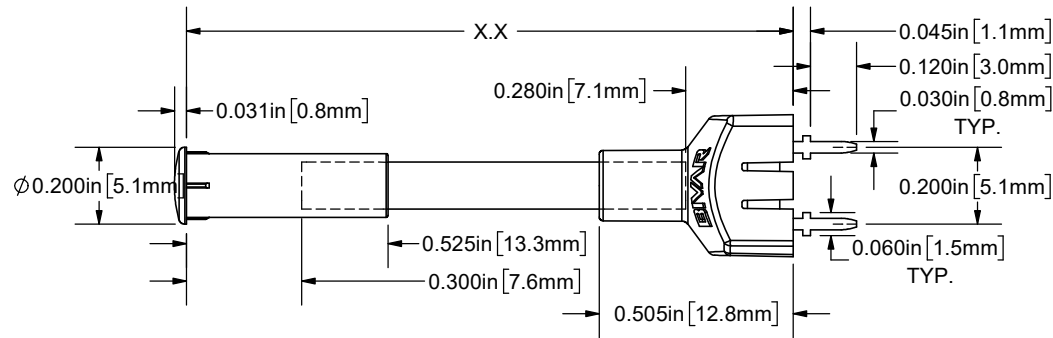
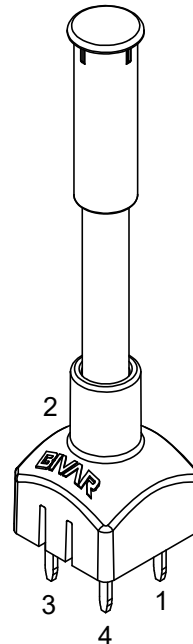


REVISIONS			
REV.	DESCRIPTION	DATE	APPROVED
A	Engineering Release	09/14/09	T.Y.
B	Updated Table for Length "X.X"	11/14/12	T.Y.
C	Updated LED Optical Characteristics	08/29/15	J.C.
D	Updated per ECO-1217	09/07/23	A.V.



"X.X" *	Tolerance
1.1" ~ 16.0"	±0.050"
16.1" ~ 40.0"	±0.15"
40.1" ~ 80.0"	±0.30"
80.1" ~ 3,940.0"	±0.5%

* Available in 0.1" increments only



SEE PAGE 2 FOR POLARITY

NOTE: ORFLP2-XXX ADAPTER SHIPPED SEPARATELY

CUSTOMER USE DRAWING

ABSOLUTE MAXIMUM RATINGS (Ta=25°C)

REVERSE VOLTAGE _____ 5V
 REVERSE CURRENT _____ 10µA
 OPERATING TEMPERATURE RANGE _____ -25°C ~ +80°C
 STORAGE TEMPERATURE _____ -30°C ~ +80°C
 LEAD SOLDERING TEMPERATURE (1/16" FROM BODY) _____ 260°C FOR 3 SECONDS

STANDARD TOLERANCE (UNLESS OTHERWISE SPECIFIED)		 4 THOMAS, IRVINE, CA. 92618 TEL: (949) 951-8808 FAX: (949) 951-3974	
DECIMALS	ANGULAR		
.X ± .2	X° ± 1°	TITLE: 2mm FLP ORCA ASSEMBLY, 5mm ROUND LENS CAP	
.XX ± .02			
.XXX ± .010		DRAWING NO: R2LC-X.X-XXX	REVISION: D
DESIGNED: R. PAJE	DATE: 09/14/09	SHEET SIZE A	CAGE CODE: 32559
REVISD: E. CHAN	DATE: 09/07/23	SCALE: 2:1	SHEET # 1 OF 2
CHECKED: A. VALDEZ	DATE: 09/07/23	CAD GENERATED DOCUMENT, DO NOT MEASURE DRAWING	

REVISIONS			
REV.	DESCRIPTION	DATE	APPROVED
	SEE SHEET #1		

Assy P/N	LED P/N	Emitted Color	Dominant Length λ_d (nm) / CCT (K)	Lens Appearance	Absolute Max. Ratings			Vf (V)			Iv (mcd)		Viewing Angle 2 $\theta_{1/2}$ (Deg)	POLARITY DIAGRAM
					Pd (mW)	If (mA)	Peak If (mA)	MIN	TYP	MAX	MIN	TYP		
					MIN - MAX									
SINGLE COLOR LED ASSEMBLIES (20mA)														
R2LC-X.X-BLU	R20BLU-4-0045	BLUE	465 - 475	WATER CLEAR	220	50	100	2.7	3.2	3.6	5000	8000	45	FIG. A
R2LC-X.X-GRN	R20GRN-4-0045	GREEN	517 - 527		220	50	100	2.7	3.2	3.6	15000	25000	45	FIG. A
R2LC-X.X-WHT	R20WHT-4-0045	WHITE	6000K		220	50	100	2.7	3.2	3.6	10000	16000	45	FIG. A
SINGLE COLOR LED ASSEMBLIES (50mA)														
R2LC-X.X-RED	R50RED-4-0030	RED	617 - 627	WATER CLEAR	60	30	160	1.8	2.1	2.4	2500	3000	30	FIG. A
R2LC-X.X-YLW	R50YLW-4-0030	YELLOW	588 - 596		60	30	160	1.8	2.1	2.4	3000	4000	30	FIG. A
BI-COLOR LED ASSEMBLIES (50mA)														
R2LC-X.X-RG	R50RG2-4-0045	RED	617 - 630	WATER CLEAR	150	80	160	1.8	2.4	2.6	3000	4000	45	FIG. B
		GREEN	515 - 525		220	80	150	3.0	3.4	3.8	6000	10000		
R2LC-X.X-RB	R50RB2-4-0045	RED	617 - 630	WATER CLEAR	150	80	160	1.8	2.4	2.6	3000	4000	45	FIG. C
		BLUE	460 - 470		220	80	150	3.0	3.4	3.8	1000	3000		
R2LC-X.X-BG	R50BG2-4-0045	BLUE	460 - 470	WATER CLEAR	220	80	150	3.0	3.4	3.8	1000	3000	45	FIG. D
		GREEN	515 - 525		220	80	150	3.0	3.4	3.8	6000	10000		
R2LC-X.X-RGB	R50RGB-4-0045	RED	617 - 630	WATER CLEAR	150	80	160	1.8	2.4	2.6	3000	4000	45	FIG. E
		GREEN	515 - 525		220	80	150	3.0	3.4	3.8	6000	10000		
		BLUE	460 - 470		220	80	150	3.0	3.4	3.8	1000	3000		

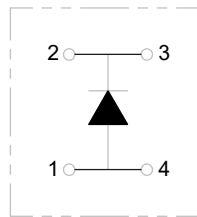


FIG. A

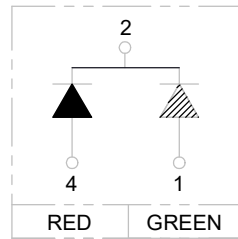


FIG. B

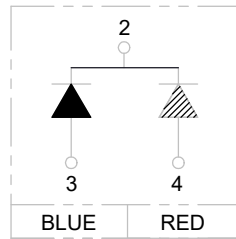


FIG. C

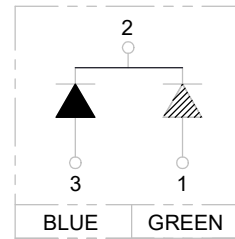


FIG. D

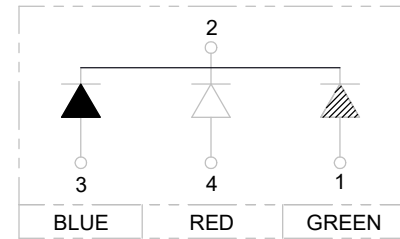


FIG. E

CUSTOMER USE DRAWING

NOTES:
1. INDIVIDUAL LED P/N DATA AVAILABLE @ WWW.BIVAR.COM.

		BIVAR [®]			
CAGE CODE:	32559	DRAWING NO:	R2LC-X.X-XXX	REVISION:	D
SHEET SIZE:	A	SCALE:	2:1	SHEET # 2 OF 2	
CAD GENERATED DOCUMENT, DO NOT MEASURE DRAWING					