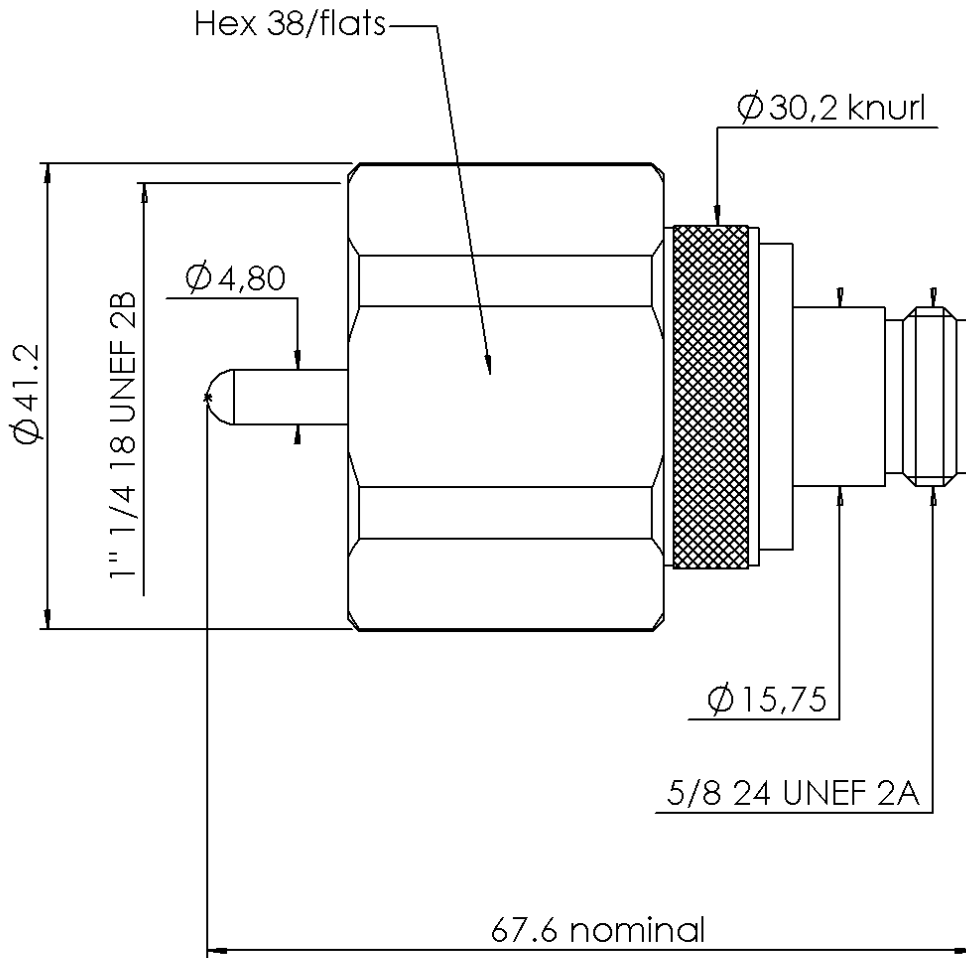


**N FEMALE - LC MALE STRAIGHT ADAPTER**

**R191.745.000**

Série : ADAPT



All dimensions are in mm.



| COMPONENTS     | MATERIALS        | PLATING (µm)           |
|----------------|------------------|------------------------|
| BODY           | BRASS            | NICKEL 2               |
| CENTER CONTACT | BERYLLIUM COPPER | GOLD 0.5 OVER NICKEL 2 |
| OUTER CONTACT  | -                | NICKEL 2               |
| INSULATOR      | PTFE             |                        |
| GASKET         | SILICONE RUBBER  |                        |
| OTHERS PARTS   | BRASS            | NICKEL 2               |
| -              | -                | -                      |
| -              | -                | -                      |

Issue : 0743 M

In the effort to improve our products, we reserve the rights to make changes judged to be necessary.



**N FEMALE - LC MALE STRAIGHT ADAPTER**

**R191.745.000**

Série : ADAPT

**PACKAGING**

**SPECIFICATION**

| Standard | Unit | Other             |
|----------|------|-------------------|
| <b>1</b> |      | <b>Contact us</b> |

**ELECTRICAL CHARACTERISTICS**

**ENVIRONMENTAL**

|                                 |                      |                          |
|---------------------------------|----------------------|--------------------------|
| Impedance                       | <b>50</b>            | $\Omega$                 |
| Frequency                       | <b>0-5</b>           | GHz                      |
| VSWR                            | <b>1.30 + 0,0000</b> | x F(GHz) Maxi            |
| Insertion loss                  | <b>NA</b>            | $\sqrt{F}$ (GHz) dB Maxi |
| RF leakage                      | - ( <b>NA</b> )      | - F(GHz) dB Maxi         |
| Voltage rating                  | <b>1400</b>          | Veff Maxi                |
| Dielectric withstanding voltage | <b>2500</b>          | Veff mini                |
| Insulation resistance           | <b>5000</b>          | M $\Omega$ mini          |

|               |                 |              |
|---------------|-----------------|--------------|
| Operating     | <b>-55/+155</b> | $^{\circ}$ C |
| Hermetic seal | <b>NA</b>       | Atm.cm3/s    |
| Panel leakage | <b>NA</b>       |              |

**MECHANICAL CHARACTERISTICS**

**OTHER CHARACTERISTICS**

|                            |                |               |
|----------------------------|----------------|---------------|
| Center contact retention   |                |               |
| Axial force – Mating end   | <b>27</b>      | N mini        |
| Axial force – Opposite end | <b>27</b>      | N mini        |
| Torque                     | <b>NA</b>      | N.cm mini     |
| Recommended torque         |                |               |
| Mating                     | <b>N</b>       | <b>0</b> N.cm |
|                            | <b>LC</b>      | <b>0</b> N.cm |
|                            | <b>-</b>       | <b>0</b> N.cm |
| Panel nut                  | <b>NA</b>      | N.cm          |
| Mating life                | <b>500</b>     | Cycles mini   |
| Weight                     | <b>38,4500</b> | g             |

Issue : 0743 M

In the effort to improve our products, we reserve the rights to make changes judged to be necessary.

