

IB IL 24 PWR IN/2F-DF-2MBD-PAC - Power module



2863834

<https://www.phoenixcontact.com/us/products/2863834>

Please be informed that the data shown in this PDF document is generated from our online catalog. Please find the complete data in the user documentation. Our general terms of use for downloads are valid.



Inline power terminal, complete with accessories (connector and marking field), 24 V DC, with fuse (main and segment voltage) and diagnostics, transmission speed 2 Mbps

Your advantages

- Supply of the 24 V main voltage U_{M}
- Feed-in or provision of the 24 V segment voltage U_{S}
- Diagnostic and status indicators

Commercial data

Item number	2863834
Packing unit	1 pc
Minimum order quantity	1 pc
Sales key	DR01
Product key	DRI121
Catalog page	Page 267 (AX-2009)
GTIN	4017918977733
Weight per piece (including packing)	85.5 g
Weight per piece (excluding packing)	44 g
Customs tariff number	85389091
Country of origin	DE

2863834

<https://www.phoenixcontact.com/us/products/2863834>

Technical data

Dimensions

Width	12.2 mm
Height	119.8 mm
Depth	71.5 mm

Interfaces

Inline local bus

Number of interfaces	2
Connection method	Inline data jumper
Transmission speed	2 Mbps

System properties

Module

ID code (dec.)	190
ID code (hex)	BE
Length code (hex)	C2
Length code (dec)	194
Process data channel	2 bit
Input address area	2 bit
Output address area	0 Byte
Register length	2 bit
Required parameter data	1 Byte
Required configuration data	4 Byte

Product properties

Product type	I/O component
Product family	Inline
Type	modular
Special properties	24 V DC
	U_M, U_S
	With fuse (U_M, U_S)
	With diagnostics

Insulation characteristics

Protection class	III (IEC 61140, EN 61140, VDE 0140-1)
------------------	---------------------------------------

Electrical properties

Fuse	Safety fuse 5 x 20 with 6.3 A slow
------	------------------------------------

Potentials

Power consumption	max. 2.55 W (entire device)
-------------------	-----------------------------

IB IL 24 PWR IN/2F-DF-2MBD-PAC - Power module



2863834

<https://www.phoenixcontact.com/us/products/2863834>

Potentials: 24 V supply (U_{24V}) for generating U_L and U_{ANA}

Supply voltage	24 V DC (via Inline connector)
Supply voltage range	19.2 V DC ... 30 V DC (including all tolerances, including ripple)

Potentials: Communications power (U_L)

Supply voltage	7.5 V DC (via voltage jumper)
Current draw	max. 45 mA DC

Potentials: Main circuit supply (U_M)

Supply voltage	24 V DC (via Inline connector)
Supply voltage range	19.2 V ... 30 V (including all tolerances, including ripple)

Potentials: Segment circuit supply (U_S)

Supply voltage	24 V DC (via Inline connector)
Supply voltage range	19.2 V DC ... 30 V DC (including all tolerances, including ripple)

Connection data

Connection technology

Connection name	Inline connector
-----------------	------------------

Conductor connection

Connection method	Spring-cage connection
Conductor cross section rigid	0.08 mm ² ... 1.5 mm ²
Conductor cross section flexible	0.08 mm ² ... 1.5 mm ²
Conductor cross section AWG	28 ... 16
Stripping length	8 mm

Inline connector

Connection method	Spring-cage connection
Conductor cross section, rigid	0.08 mm ² ... 1.5 mm ²
Conductor cross section, flexible	0.08 mm ² ... 1.5 mm ²
Conductor cross section AWG	28 ... 16
Stripping length	8 mm

Environmental and real-life conditions

Ambient conditions

Degree of protection	IP20
Ambient temperature (operation)	-25 °C ... 55 °C

Mounting

Mounting type	DIN rail mounting
---------------	-------------------

IB IL 24 PWR IN/2F-DF-2MBD-PAC - Power module



2863834

<https://www.phoenixcontact.com/us/products/2863834>

Classifications

ECLASS

ECLASS-11.0	27242610
ECLASS-12.0	27242610
ECLASS-13.0	27242610

ETIM

ETIM 9.0	EC001600
----------	----------

UNSPSC

UNSPSC 21.0	32151600
-------------	----------

2863834

<https://www.phoenixcontact.com/us/products/2863834>

Environmental product compliance

EU RoHS

Fulfills EU RoHS substance requirements	Yes
Exemption	7(a), 7(c)-I

China RoHS

Environment friendly use period (EFUP)	EFUP-E
	No hazardous substances above the limits

EU REACH SVHC

REACH candidate substance (CAS No.)	Lead(CAS: 7439-92-1)
-------------------------------------	----------------------

IB IL 24 PWR IN/2F-DF-2MBD-PAC - Power module



2863834

<https://www.phoenixcontact.com/us/products/2863834>

Accessories

IB IL SCN-PWR IN-CP - Inline connector

2727637

<https://www.phoenixcontact.com/us/products/2727637>

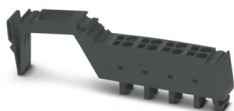


Connector, colored, for Inline power and segment terminal blocks

IB IL SCN-PWR IN - Inline connector

2727462

<https://www.phoenixcontact.com/us/products/2727462>



Connector, for Inline power and segment terminal blocks

IB IL 24 PWR IN/2F-DF-2MBD-PAC - Power module



2863834

<https://www.phoenixcontact.com/us/products/2863834>

IB IL FIELD 2 - Marking field

2727501

<https://www.phoenixcontact.com/us/products/2727501>

Marking field, width: 12.2 mm



ESL 62X10 - Insert strip

0809492

<https://www.phoenixcontact.com/us/products/0809492>

Insert strip, Sheet, white, unlabeled, can be labeled with: Office printing systems, CMS-P1-PLOTTER, mounting type: insert, lettering field size: 62 x 10 mm, Number of individual labels: 72



Phoenix Contact 2024 © - all rights reserved

<https://www.phoenixcontact.com>

Phoenix Contact USA

586 Fulling Mill Road

Middletown, PA 17057, United States

(+717) 944-1300

info@phoenixcon.com