

# 0.35mm pitch Board to FPC Connector

## FB35 Series

### OUTLINE

FB35 is a 0.35mm pitch board to FPC connector with a stacking height of 0.7mm. Each connector has two retention tabs that also serve as power contacts with each having capability of supporting 4A of current, which can reduce the number of overall connections, the size of your device and the cost associated with reduced board space.



### FEATURE

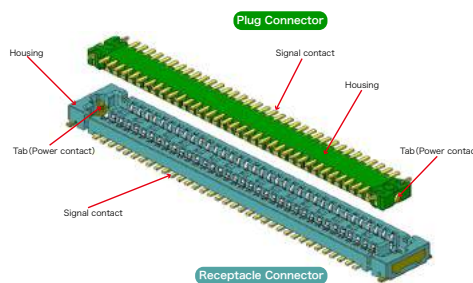
- Stacking height is 0.7mm
- Pitch 0.35mm
- Available pin counts :26,40,44,60,70
- The retention tabs serve as power contacts with up to 4A current available in each of two pins, which allows for more efficient use of the available connection pins.
- The retention tabs of the receptacle connector are assembled by insert molding making a more robust structure to withstand manual assembly.
- Manual assembly improved due to click feel when engaged.
- The insertion force and extraction force are equalized regardless of the number of contacts.
- The FB35 has been designed for optimal insertion and retention forces across all pin counts.

### APPLICATIONS

Mobile phone, Wearable devices, PDA, Compact portable devices

### SPECIFICATIONS

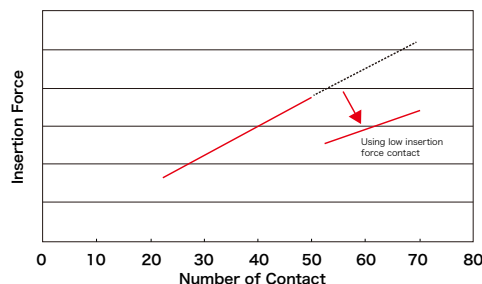
|                              |   |
|------------------------------|---|
| Rated Voltage                | 30VAC (r.m.s.) / 30VDC                                    |
| Rated Current                | 0.3A Signal Contact(Total 12A max.)<br>4.0A Power Contact |
| Insulation Resistance        | 1,000 MΩ min. / 250VDC                                    |
| Dielectric Withstand Voltage | AC 200V (r.m.s.) / 1 分間                                   |
| Contact Resistance           | 50 m Ω max. Signal Contact<br>20 m Ω max. Power Contact   |
| Operating Temperature        | -40°C ~ +85°C   |



### MATERIAL /FINISH



| Item           | Material / Finish                 |
|----------------|-----------------------------------|
| Signal Contact | Copper Alloy/Au over Ni Plating   |
| Housing        | LCP Resin (UL94V-0) / Black       |
| Power Contact  | Copper Alloy / Au over Ni Plating |



© Specifications and/or dimensions in this catalogue are subject to change without notice.  
Your catalogue checking the latest specifications with our drawings would be highly appreciated.

▶ 0.35mm pitch Board to FPC Connector

**Plug Connector**

**FB35 - PD26-3A**

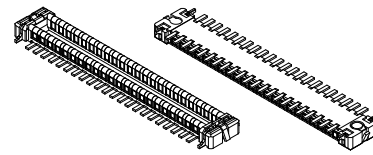
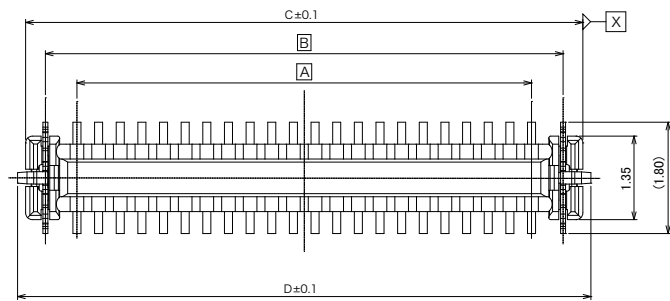
Series Name  
FB35 : 0.35mm pitch board  
to FPC connector  
Stacking Height :0.7mm

Mating Style  
P : Plug

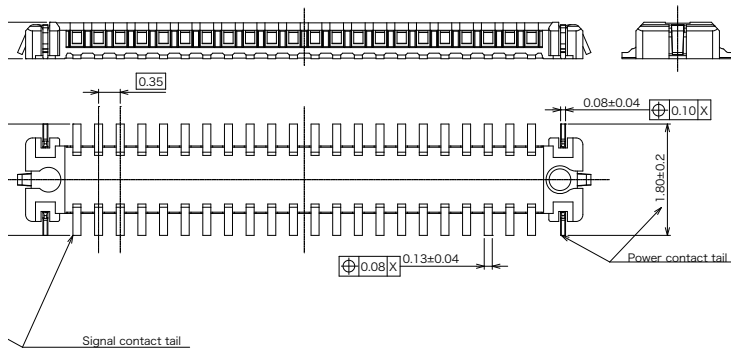
Contact Plating  
3 : Au(Flash) over Ni plating

Number of Contact  
See Table-1

Contact Type  
C : Large number of Contact (above 52 contacts)  
D : Middle number of Contact (below 50 contacts)



Solid View  
( Number of contact is 44 + 2 )  
Scale 10 : 1



| GENERAL TOLERANCE |       |
|-------------------|-------|
| X<5               | ±0.15 |
| 5≤X<15            | ±0.25 |
| 15≤X              | ±0.40 |
| ANGLE             | ±3°   |

Table-1 ※ Regarding the number of contact, please contact our sales.

| Part Number  | Number of Contact | A     | B     | C     | D     | E     |
|--------------|-------------------|-------|-------|-------|-------|-------|
| FB35-PD26-3A | 26                | 4.20  | 5.22  | 5.86  | 6.12  | 6.90  |
| FB35-PD40-3A | 40                | 6.65  | 7.67  | 8.31  | 8.57  | 9.35  |
| FB35-PD44-3A | 44                | 7.35  | 8.37  | 9.01  | 9.27  | 10.05 |
| FB35-PC60-3A | 60                | 10.15 | 11.17 | 11.81 | 12.07 | 12.85 |
| FB35-PC70-3A | 70                | 11.90 | 12.92 | 13.56 | 13.82 | 14.60 |

© Specifications and/or dimensions in this catalogue are subject to change without notice.  
Your catalogue checking the latest specifications with our drawings would be highly appreciated.

▶ 0.35mm pitch Board to FPC Connector

Receptacle Connector

FB35 - RC 32-3A

Series Name  
FB35 : 0.35mm pitch Board  
to FPC Connector  
Stacking Height 0.7mm

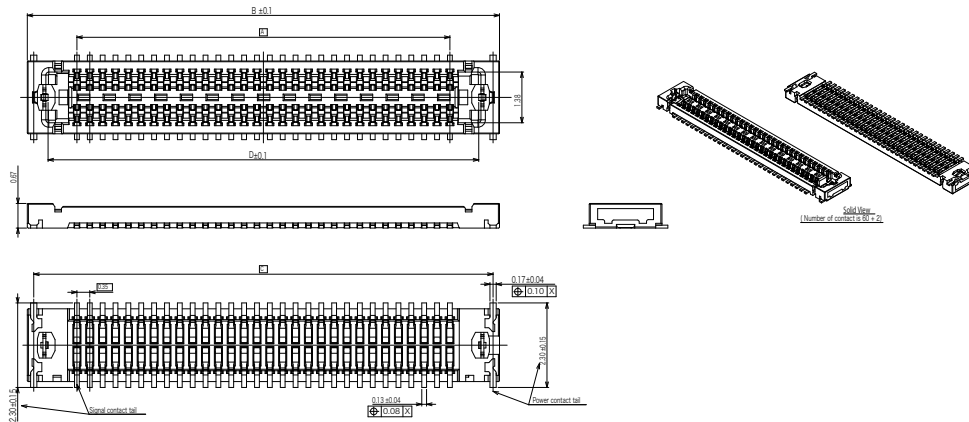
Mating Style  
R : Receptacle

Contact Plating  
3 : Au(Flash) over Ni Plating

Number of Contact  
See Table-1

Contact Type  
C : Large number of Contact (above 52 contacts)  
D : Middle number of Contact (below 50 contacts)

Large Number of Contact Type



Middle Number of Contact Type

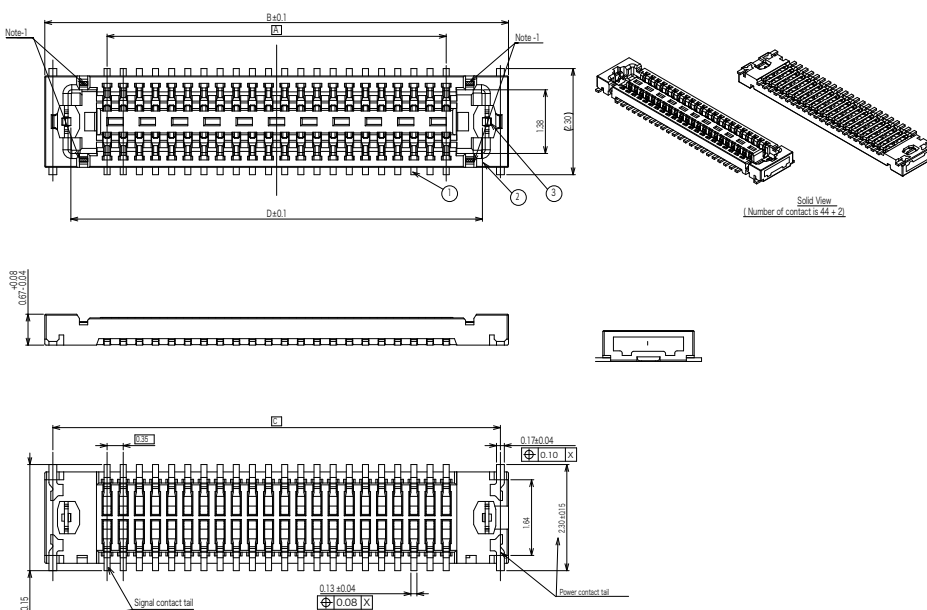


Table-2 ※ Regarding the number of contact, please contact our sales.

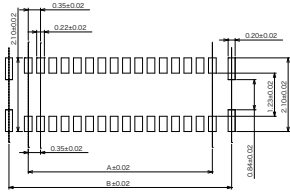
| Part Number  | Number of Contact | A     | B     | C     | D     |
|--------------|-------------------|-------|-------|-------|-------|
| FB35-RD26-3A | 26                | 4.20  | 6.90  | 6.55  | 5.77  |
| FB35-RD40-3A | 40                | 6.65  | 9.35  | 9.00  | 8.22  |
| FB35-RD44-3A | 44                | 7.35  | 10.05 | 9.70  | 8.92  |
| FB35-RC60-3A | 60                | 10.15 | 12.85 | 12.50 | 11.72 |
| FB35-RC70-3A | 70                | 11.90 | 14.60 | 14.25 | 13.47 |

© Specifications and/or dimensions in this catalogue are subject to change without notice.  
Your catalogue checking the latest specifications with our drawings would be highly appreciated.

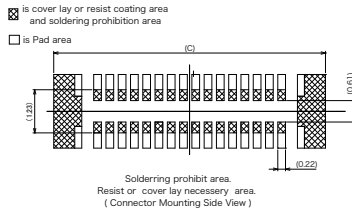
▶ 0.35mm pitch Board to FPC Connector

Recommended P.C.B. Layout

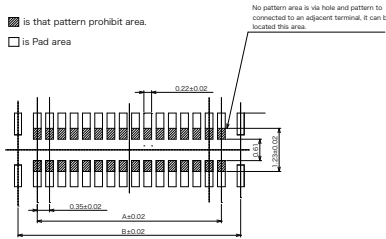
Plug Connector



Recommended PCB Layout  
(Connector Mounting Side View)

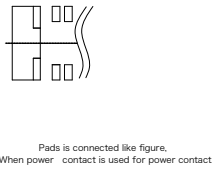


Soldering prohibition area.  
Resist or cover lay necessary area.  
(Connector Mounting Side View)

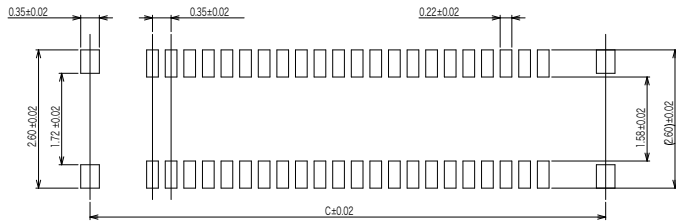


Pattern prohibit area.  
(Connector Mounting Side View)

※ BB35-PDxx-3A and BB35-PCxx-3A connector is common PCB layout.

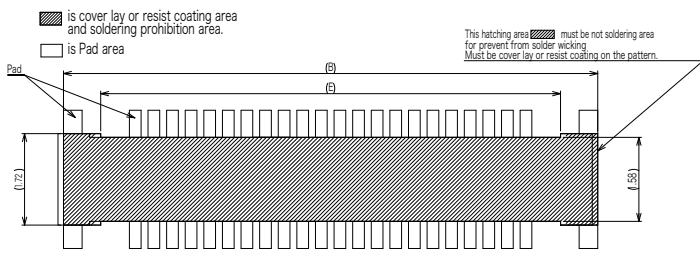


Receptacle Connector



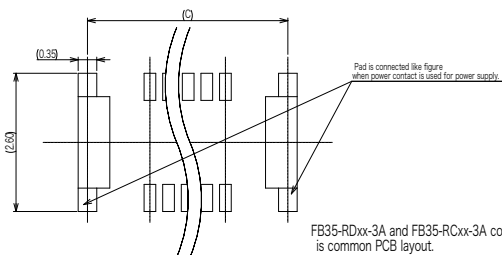
Reference Pad Layout  
(Connector Mounting Side View)

FB35-RDxx-3A and FB35-RCxx-3A connector is common PCB layout.



Soldering prohibition area  
Resist area or cover lay area

※ BB35-RDxx-3A and BB35-RCxx-3A connector is common PCB layout.



FB35-RDxx-3A and FB35-RCxx-3A connector is common PCB layout.

In case that power contact used for power supply

© Specifications and/or dimensions in this catalogue are subject to change without notice.  
Your catalogue checking the latest specifications with our drawings would be highly appreciated.