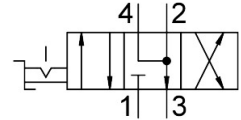
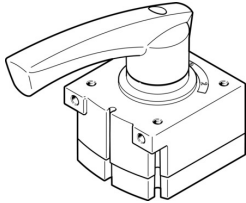


Hand lever valve VHER-H-B43E-B-G18

Part number: 3488207

FESTO



General operating condition

Data sheet

Feature	Value
Valve function	4/3, exhausted
Actuation type	Manual
Width	42 mm
Standard nominal flow rate	800 l/min
Pneumatic working port	G1/8
Operating pressure	0 bar ... 10 bar
Information on operating pressure	Vacuum operation at connection 3 only In dual pressure mode, the pressure at connection 1 must be higher than at connection 3.
Structural design	Rotary gate valve
Nominal width	6 mm
Exhaust air function	With flow control option
Application note	Operate by hand only
Sealing principle	Hard
Type of control	Direct
Flow direction	Non-reversible
Symbol	00995941
Underlap	yes
Switching position indication	with accessories
Operating medium	Compressed air as per ISO 8573-1:2010 [7:4:4]
Information on operating and pilot media	Operation with oil lubrication possible (required for further use)
Corrosion resistance class (CRC)	2 - Moderate corrosion stress
LABS (PWIS) conformity	VDMA24364-B1/B2-L
Temperature of medium	-20 °C ... 80 °C
Ambient temperature	-20 °C ... 80 °C
Actuating torque	0.9 Nm
Product weight	220 g
Type of mounting	Optionally: Front panel mounting With through-hole
Pneumatic connection 1	G1/8
Pneumatic connection 2	G1/8
Pneumatic connection 3	G1/8
Pneumatic connection 4	G1/8
Note on materials	RoHS-compliant
Seals material	NBR
Housing material	Die-cast aluminum

Feature	Value
Lever material	Die-cast aluminum