

24-32GHz 4-way Wilkinson Power Divider

PDW07069

DESCRIPTION

DLI's 24-32GHz 4-way power divider / combiner offers unmatched size and performance in a surface mount configuration. This power divider utilizes DLI's low loss temperature stable materials which offer small size and minimal performance variation over temperature.

FEATURES

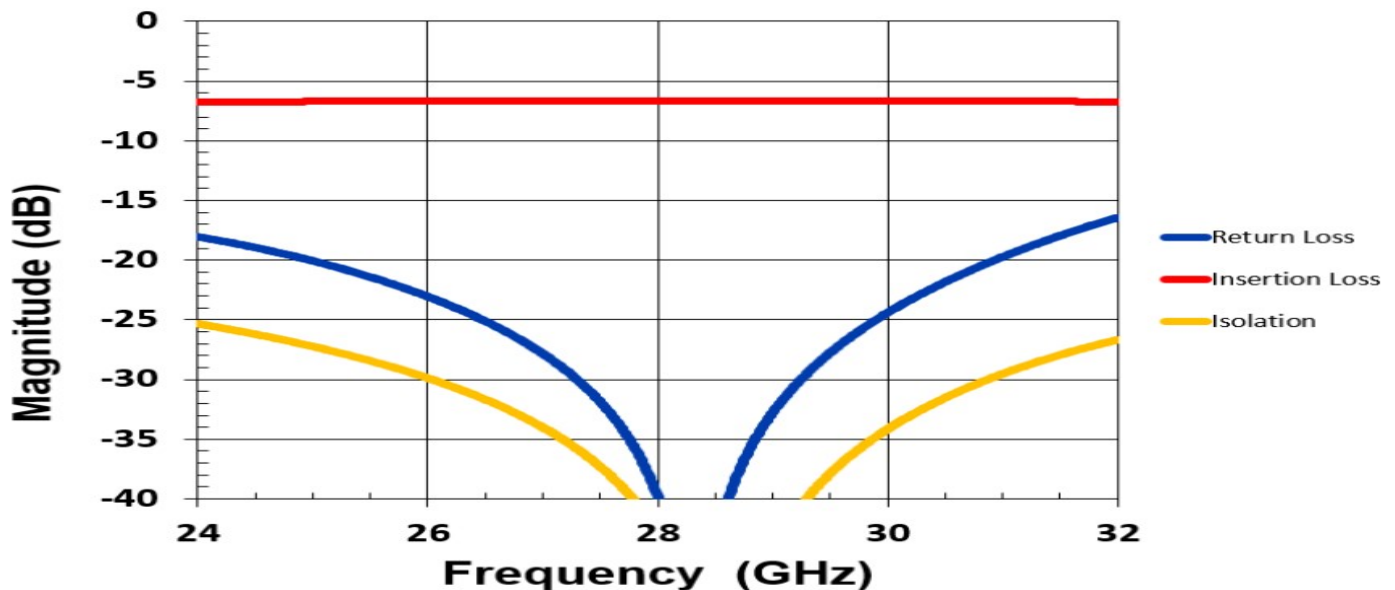
- Small Size
- Frequency Stable over Temperature
- Solder Surface Mount Package
- Excellent Repeatability
- Moisture Sensitivity Level: MSL1
- Operating & Storage Temp: -55°C to +125°C
- Characteristic Impedance: 50Ω

SPECIFICATIONS*

Parameter	Frequency Range (GHz)	Min	Typ.	Max	
Nominal Power Splitting (dB)	24-32		6.0		
Nominal Phase Shift (Deg)			0.0		
Amplitude Balance (dB)					± .5
Phase Balance (Deg)					± 6.0
Excess Insertion Loss (dB)					1
Return Loss (dB)			10	14	
Isolation (dB)			10	14	
Input Power (W) ¹					TBD

*Electrical specifications based on typical probed performance at room temperature. Insertion loss shall vary ±0.5dB over temperature.

Typical Measured Performance



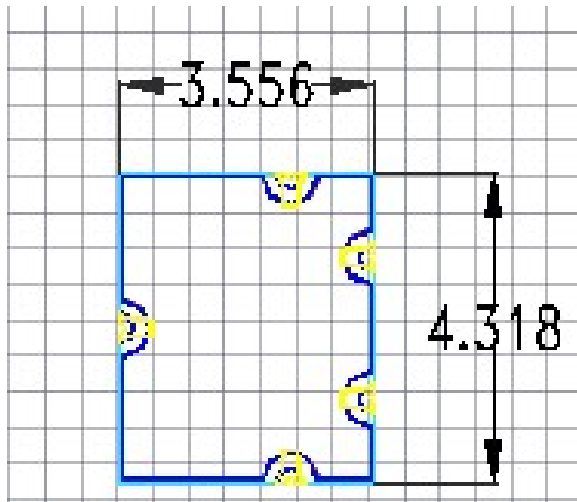
24-32GHz 4-way Wilkinson Power Divider

PDW07069

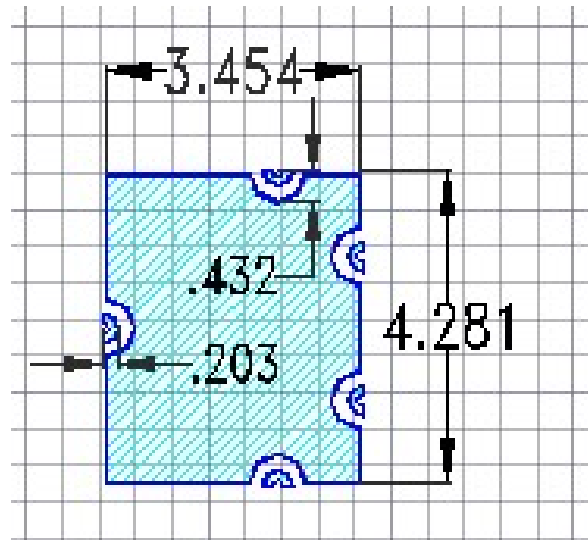
Physical Dimensions

Units = mm

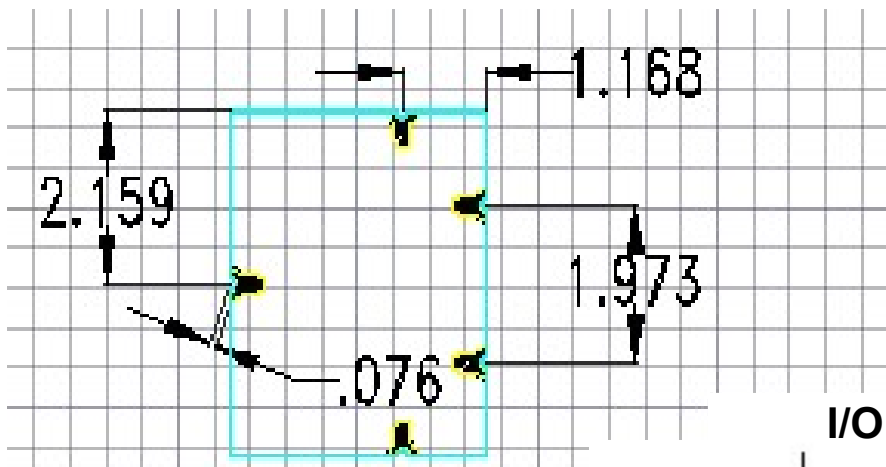
Top View



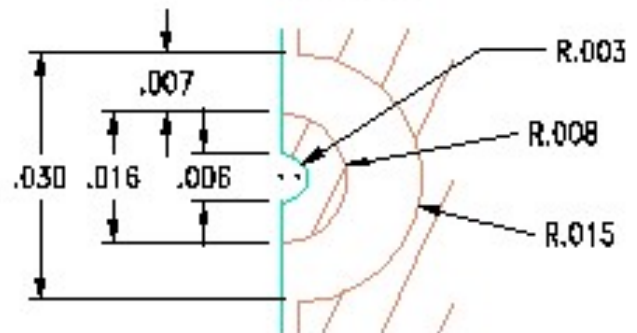
Bottom View



Top View Details



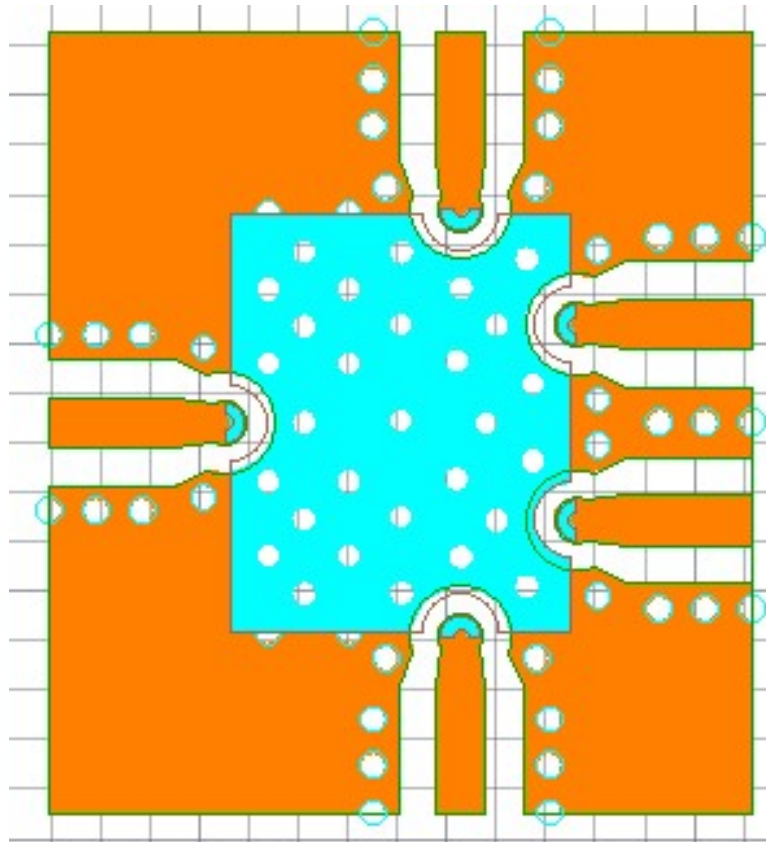
I/O Detail (inches)



24-32GHz 4-way Wilkinson Power Divider

PDW07069

Recommended PCB Layout



Recommended PCB board :

10.0 mil Roger Board RO4350B

50Ω GCPW traces are used to carry RF signals into the port

Ensure adequate grounding beneath the part.

