

SPE-01-01-E

SPE SERIES

IP68 SEALED ETHERNET SOCKET

SPECIFICATIONS

For complete specifications see www.samtec.com?SPE

- Insulator Material:** Black Liquid Crystal Polymer
- Contact:** Phosphor Bronze
- Seal:** Silicone
- Screw:** Stainless Steel
- Nut:** Stainless Steel
- Sealing Washer:** Rubber

Mates with:
RCE

ALSO AVAILABLE

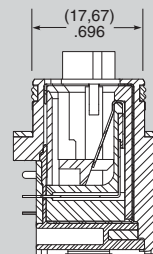
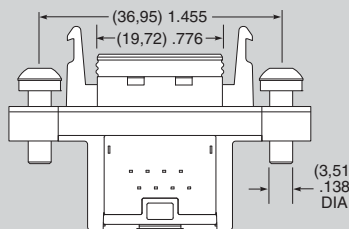
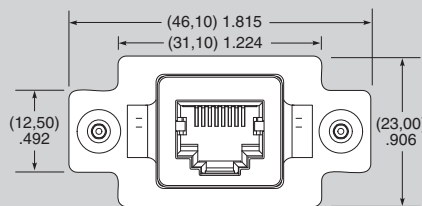
Dust Cap:
-01 Port = DCRE-01-P-01

Meets IP68 requirements for dust & water sealing

Meets CAT3, CAT5 and CAT5e specifications

Audible click positive latching

| SPE | NO. OF PORTS | LEAD STYLE | PLATING |
|-----|--------------|----------------------|--|
| -01 | | -01 = Right Angle | -E = 50µ" (1,27 µm) Gold on contact, Flash Gold on tail |



Some components Removed for clarity

Due to technical progress, all designs, specifications and components are subject to change without notice.

WWW.SAMTEC.COM

Mouser Electronics

Authorized Distributor

Click to View Pricing, Inventory, Delivery & Lifecycle Information:

[Samtec:](#)

[SPE-01-01-E](#) [SPE-02-01-E](#)