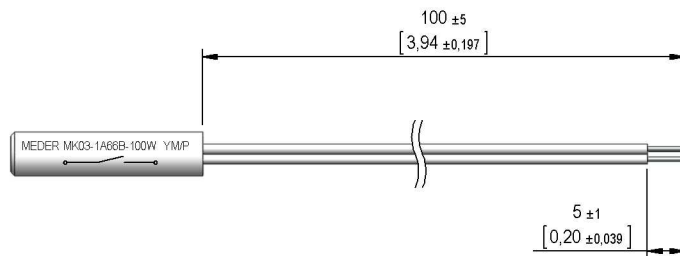
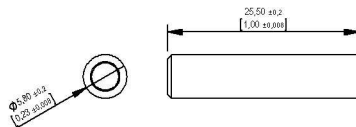


Dimensions mm[inch]

 tolerances acc. to DIN ISO 2768-m
 Toleranzen gem. DIN ISO 2768-m

Isometric

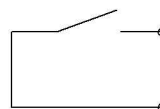
 Scale 1:2
 Maßstab 1:2

Housing

Cable

 Flat cable LIYZ 2x0,14mm²
 Colour: white
 Flachbandkabel LIYZ 2x0,14mm²
 Farbe: weiß

Terminals/Connector

 Ends tinned
 Enden verzinnt

Schematic

Marking

 according to EN60062/factory code
 gem. EN60062/Fertigungsstätte


Magnetic properties	Conditions	Min	Typ	Max	Unit
Pull-In	at 20°C	21		40	AT
Test equipment		KMS13+PK002+SA002			

Special Product Data	Conditions	Min	Typ	Max	Unit
Contact - No.		66			
Contact - form		A - NO			
Contact rating	Any DC combination of V & A not to exceed their individual max.'s			10	W
Switching voltage	DC or Peak AC			180	V
Carry current	DC or Peak AC			1,25	A
Switching current	DC or Peak AC			0,5	A
Sensor-resistance	measured with 40% overdrive			190	mOhm
Housing material		PBT glass fibre reinforced			
Case colour		white			
Sealing compound		Polyurethan			

Environmental data	Conditions	Min	Typ	Max	Unit
Shock	1/2 sine wave duration 11ms			50	g
Vibration	from 10 - 2000 Hz			20	g
Operating temperature	cable not moved	-30		70	°C
Operating temperature	cable moved	-5		70	°C
Storage temperature		-30		70	°C
Reach / RoHS conformity		yes			

General data	Conditions	Min	Typ	Max	Unit
Mounting advice		over 5m cable, a resistor is recommended.			