

# Surface Mount Bandpass Filter

## BPF-A60+

50Ω      55 to 65 MHz



Generic photo used for illustration purposes only

CASE STYLE: HQ1157

### The Big Deal

- Low frequency 16.67% BW
- Fast roll-off
- High rejection, 40 dB from 80-900 MHz
- Miniature shielded package

### Product Overview

The BPF-A60+ is a band pass filter in a shielded package (size of 0.365" x 1.360" x .35") fabricated using SMT technology. Covering 60 MHz  $\pm$  5 MHz bandwidth, these units offer good matching within the passband and high rejection. This unit uses a miniature high Q capacitors and wire welded inductors for high reliability. In addition it has repeatable performance across production lots and consistent performance across temperature.

### Key Features

Feature	Advantages
Low frequency and fractional Bandwidth 16.67%	Fast-roll-off, this will attenuate frequency closer to the passband with good rejection value of > 20 dB.
More than 40 dB rejection up to 900 MHz	This enables the filter to attenuate spurious signals and reject harmonics for a broadband of frequency.
Shielded case	Reduced interference with and from the surrounding components.

#### Notes

- A. Performance and quality attributes and conditions not expressly stated in this specification document are intended to be excluded and do not form a part of this specification document.  
B. Electrical specifications and performance data contained in this specification document are based on Mini-Circuit's applicable established test performance criteria and measurement instructions.  
C. The parts covered by this specification document are subject to Mini-Circuits standard limited warranty and terms and conditions (collectively, "Standard Terms"); Purchasers of this part are entitled to the rights and benefits contained therein. For a full statement of the Standard Terms and the exclusive rights and remedies thereunder, please visit Mini-Circuits' website at [www.minicircuits.com/MCLStore/terms.jsp](http://www.minicircuits.com/MCLStore/terms.jsp)



# Surface Mount Bandpass Filter

50Ω 55 to 65 MHz

## BPF-A60+



Generic photo used for illustration purposes only

CASE STYLE: HQ1157

### Features

- Fast roll-off
- High rejection, 36 dB typical
- Good VSWR 1.2:1 typical in passband
- Miniature shielded case
- Aqueous washable

### Applications

- Test equipments
- Harmonic rejection
- Transmitters / receivers

### Electrical Specifications at 25°C

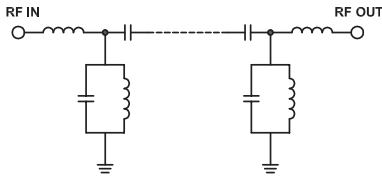
Parameter	F#	Frequency (MHz)	Min.	Typ.	Max.	Unit	
Pass Band	Center Frequency	—	—	60	—	MHz	
	Insertion Loss	F1-F2	55-65	—	3.4	4.5	dB
	VSWR	F1-F2	55-65	—	1.5	2.2	:1
Stop Band, Lower	Insertion Loss	DC-F3	DC-50	20	36	—	dB
	VSWR	DC-F3	DC-50	—	21	—	:1
Stop Band, Upper	Insertion Loss	F4-F5	75-900	20	34	—	dB
	VSWR	F4-F5	75-900	—	30	—	:1

### Maximum Ratings

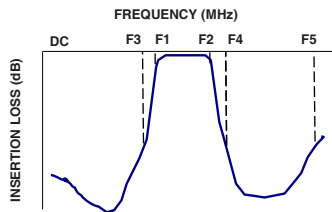
Operating Temperature	-40°C to 85°C
Storage Temperature	-55°C to 100°C
RF Power Input	320mW

Permanent damage may occur if any of these limits are exceeded.

### Functional Schematic



### Typical Frequency Response

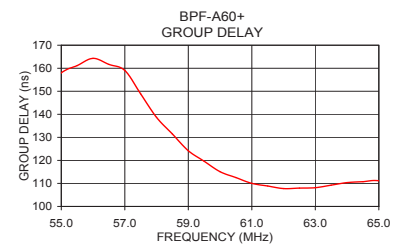
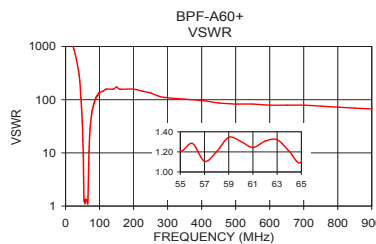
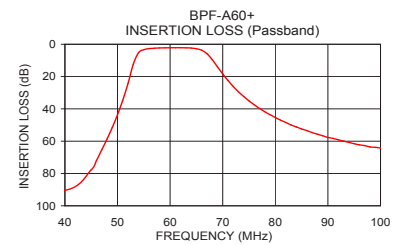
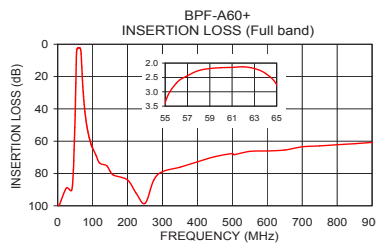


### Typical Performance Data at 25°C

Frequency (MHz)	Insertion Loss (dB)	VSWR (:1)	Frequency (MHz)	Group Delay (nsec)
1.0	99.79	1737.18	55.00	158.01
45.0	77.72	108.58	55.50	161.16
47.0	65.39	69.49	56.00	164.30
50.0	43.58	27.16	56.50	161.67
51.0	34.62	16.72	57.00	159.04
52.0	24.18	8.99	57.50	148.86
53.0	12.32	3.53	58.00	138.67
54.0	5.20	1.36	58.50	131.43
55.0	3.37	1.21	59.00	124.19
60.0	2.16	1.30	59.50	119.63
65.0	2.75	1.10	60.00	115.07
66.0	3.69	1.48	60.50	112.54
67.0	5.83	2.77	61.00	110.00
69.0	13.96	10.69	61.50	108.88
72.0	26.12	27.59	62.00	107.76
75.0	35.06	44.55	63.00	108.14
100.0	64.23	133.63	63.50	109.25
250.0	98.54	133.63	64.00	110.35
500.0	67.64	82.73	64.50	110.76
900.0	60.77	66.82	65.00	111.17

### +RoHS Compliant

The +Suffix identifies RoHS Compliance. See our web site for RoHS Compliance methodologies and qualifications



### Notes

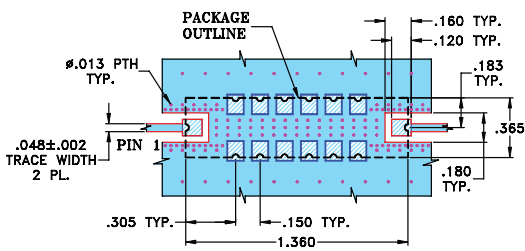
- Performance and quality attributes and conditions not expressly stated in this specification document are intended to be excluded and do not form a part of this specification document.
- Electrical specifications and performance data contained in this specification document are based on Mini-Circuit's applicable established test performance criteria and measurement instructions.
- The parts covered by this specification document are subject to Mini-Circuits standard limited warranty and terms and conditions (collectively, "Standard Terms"); Purchasers of this part are entitled to the rights and benefits contained therein. For a full statement of the Standard Terms and the exclusive rights and remedies thereunder, please visit Mini-Circuits' website at [www.minicircuits.com/MCLStore/terms.jsp](http://www.minicircuits.com/MCLStore/terms.jsp)



## Pad Connections

INPUT	1
OUTPUT	8
GROUND	2,3,4,5,6,7,9,10,11,12,13,14

**Demo Board MCL P/N: TB-363+**  
**Suggested PCB Layout (PL-227)**

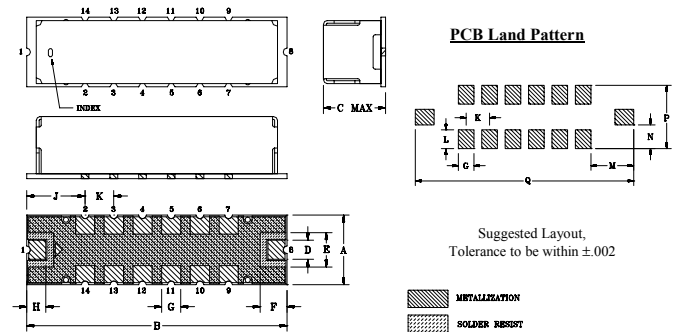


**NOTE:**

1. TRACE WIDTH IS SHOWN FOR FR4 WITH DIELECTRIC THICKNESS .025"±.002". COPPER: 1/2 OZ. EACH SIDE. FOR OTHER MATERIALS TRACE WIDTH MAY NEED TO BE MODIFIED.
2. BOTTOM SIDE OF THE PCB IS CONTINUOUS GROUND PLANE.

- DENOTES PCB COPPER LAYOUT WITH SMOBC (SOLDER MASK OVER BARE COPPER)
- DENOTES COPPER LAND PATTERN FREE OF SOLDERMASK

## Outline Drawing



## Outline Dimensions (inch / mm)

A	B	C	D	E	F	G	H
.365	1.360	.35	.100	.180	.140	.100	.100
9.27	34.54	8.89	2.54	4.57	3.56	2.54	2.54
J	K	L	M	N	P	Q	wt
.305	.150	.120	.275	.152	.405	1.400	grams
7.75	3.81	3.05	6.99	3.86	10.29	35.56	4.0

*Note: Please refer to case style drawing for details*

**Notes**

- A. Performance and quality attributes and conditions not expressly stated in this specification document are intended to be excluded and do not form a part of this specification document.
- B. Electrical specifications and performance data contained in this specification document are based on Mini-Circuit's applicable established test performance criteria and measurement instructions.
- C. The parts covered by this specification document are subject to Mini-Circuits standard limited warranty and terms and conditions (collectively, "Standard Terms"); Purchasers of this part are entitled to the rights and benefits contained therein. For a full statement of the Standard Terms and the exclusive rights and remedies thereunder, please visit Mini-Circuits' website at [www.minicircuits.com/MCLStore/terms.jsp](http://www.minicircuits.com/MCLStore/terms.jsp)