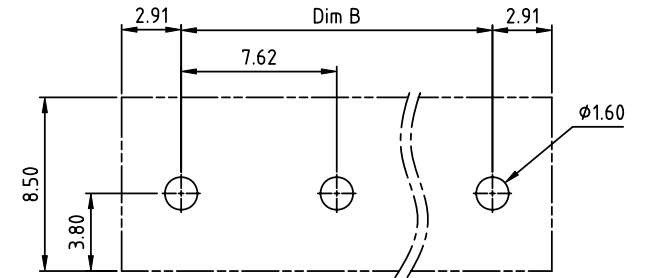
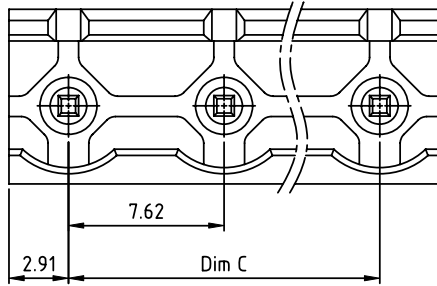
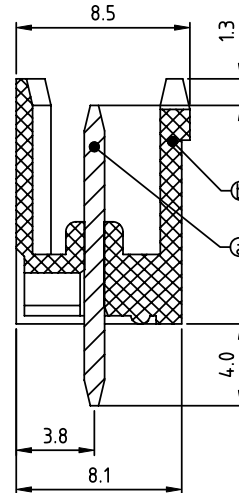
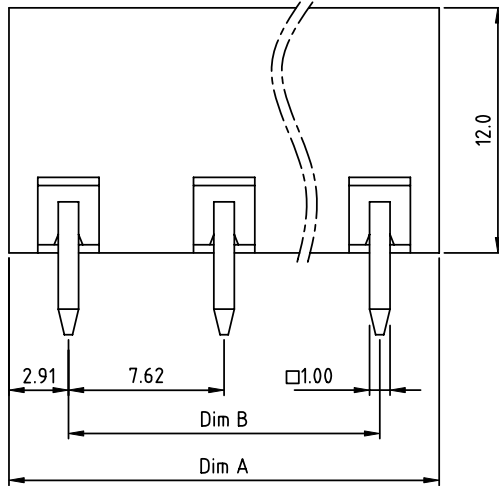


PRODUCT NUMBER	PITCH
OQxx00x000J0G	7.62 mm



RECOMMENDED P.C.B LAYOUT
TOP VIEW



Material:

- Item ③ Male contact pin: Copper Tin plated
 - Item ④ Terminal housing: Thermoplastic (UL94V-0)
- Electrical: cULus TUV
- Voltage rating: 300V 750V
 - Current rating: 20A 15A
 - Withstanding Voltage: 1.6 KV 6KV
 - Operating temperature: -40°C to +115°C
 - Soldering temperature: 260°C±5°C/5 Sec
 - Safety Approval:

DIMENSION

Dim A	(N-1)X7.62+5.82
Dim B&C	(N-1)X7.62

N= NUMBER OF POLES

Poles	Tolerance
2P-6P	±0.20
7P-12P	±0.30
13P-16P	±0.40

PART NO.: OQ xx 0 0 x 0 00J0 G

No. of poles	0	Black (RAL9005)	RoHS compliant (lead<4%) In copper Alloy
02 2 poles	2	Red (RAL3001/D)	
03 3 poles	3	Orange(RAL2011/P)	
... ..	4	Yellow(RAL1018/A)	
16 16 poles	5	Green(RAL6018/T)	
	6	Blue (RAL5015/A)	
	8	Grey(RAL7035/D)	
	9	White(RAL1102)	
	C	Green(RAL6018/U)	

mat'l. code		surface ASME Y14.5	tolerance ASME Y14.5	projection 	product family TERMINAL BLOCK
ltr	ecn no	dr	date	MM ←→	title TERMINAL BLOCK PLUGGABLE SOCKET,OPEN,VERTICAL
tolerances unless otherwise specified					
angles		X.±0.5		scale	dwg no OQxx00x000J0G
X*±1°		X.X±0.3			
dr		HANKE FENG	040414		sheet 1 of 1
enr		HANKE FENG	040414		size A4
chr		SHI JUN	040414		type CUSTOMER Drawing
appd		SHI JUN	040414		
sheet index	revision	A			