



**PennEngineering**  
**Corporate Headquarters – Danboro, PA**  
 5190 Old Easton Rd.  
 Danboro, PA 18916  
**Phone:** 215-766-8853  
**Toll-Free Phone:** 1-800-237-4736 (U.S. only)  
**Email:** [info@pemnet.com](mailto:info@pemnet.com)  
**Website:** [www.pemnet.com](http://www.pemnet.com)

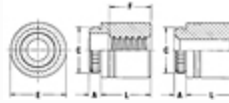
## Part # KFSE-116-4, Broaching Standoffs - Types KFE, KFSE - Unified

**Type KFE and KFSE** - Broaching standoffs, threaded or unthreaded for stacking or spacing.



### Specifications

<b>Thru Hole + .004 -.003</b>	.116 in
<b>Thru-Hole Code</b>	116
<b>Length Code</b>	4
<b>A (Shank) Max.</b>	.060 in
<b>Min. Sheet Thickness</b>	.060 in
<b>Hole Size in Sheet + .003 - .000</b>	.166 in
<b>C ± .003</b>	.184 in
<b>E ± .005</b>	.219 in
<b>L - Length ± .005</b>	.125 in
<b>Min. Dist. Hole C/L to Edge</b>	.170 in
<b>For Use in Sheet Hardness<sup>1</sup></b>	HRB 70 / HB 125 or Less PC Board
<b>Fastener Material</b>	300 Series Stainless Steel
<b>Standard Finish</b>	Passivated and/or tested per ASTM A380
<b>CAD Supplier</b>	PennEngineering® (PEM®)



<sup>1</sup> HRB - Hardness Rockwell "B" Scale. HB - Hardness Brinell.