



# CRH, 3CRH SERIES

# SPARK QUENCHER



## Features

- 500VAC rating for application in high voltage phase control.
- Flexible wire leads with external mounting tab.
- 6 and 10 watt non-inductive, high pulse resistor.

## Applications

- 500VAC line Automatic machines and Office appliances.

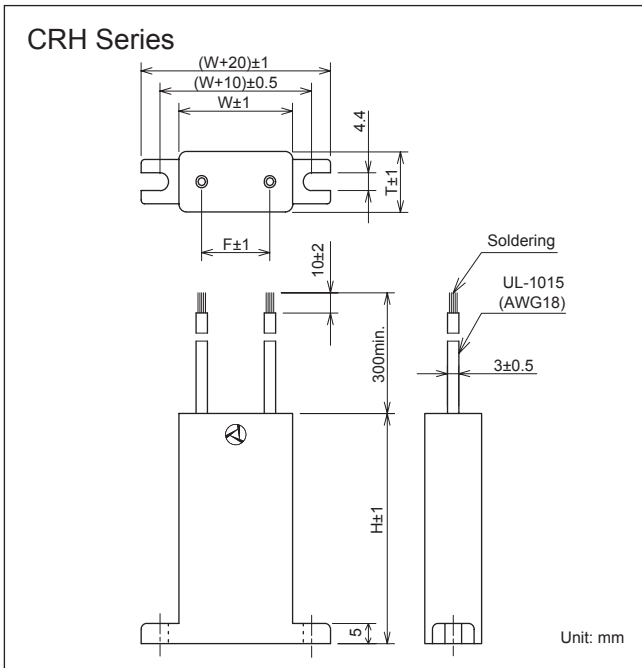


CRH Series

### • Circuit

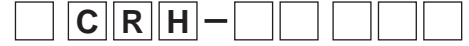


### • Dimensions



Safety Standard	File No.
UL :UL1283	E78644

### • Model numbering system



Supported Series Name Capacitance Resistance

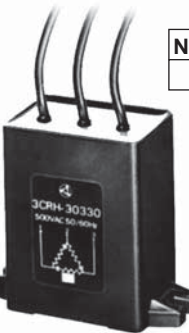
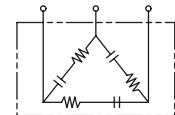
None	1 Phase
3	3 Phase

10	0.1μF	270	27Ω
20	0.22μF	330	33Ω
30	0.33μF	470	47Ω
50	0.47μF	680	68Ω

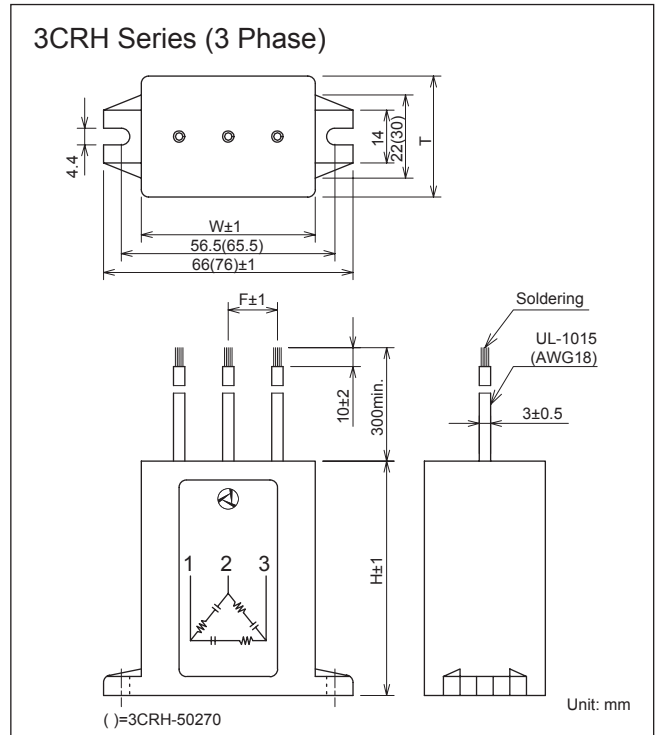
The combination of Resistance and Capacitance is shown in following chart.

## 3CRH Series (3 Phase)

### • Circuit



### • Dimensions



## Electrical Specifications

Rated Voltage **500VAC**

Safety Standard	Model Number	Capacitance μF±20%	Resistance Ω±30%	Dimensions				Pulse condition (max.)				Peak Pulse Voltage	Test Voltage	Insulation Resistance		
				W	H	T	F	Peak to peak	Pulse width	Repetitive frequency	Pulse width (sec) x Frequency (Hz)					
UL	CRH-10680	0.1	68(6W)	30	57	15	18	1,000V	50msec.	720Hz	1.0	1,500V	Line to Line 1,250VAC 50/60Hz 60sec Line to Case 2,000VAC 50/60Hz 60sec	Line to Line 10,000MΩmin. Line to Case 100,000MΩmin. (at 500VDC)		
	CRH-20470	0.22	47(6W)													
	CRH-30330	0.33	33(6W)													
	CRH-50270	0.47	27(10W)	40	20	28										
	3CRH-30330	0.33/1 phase	33 (6W)/1 phase	46	62	32	13								100msec.	0.2
	3CRH-50270	0.47/1 phase	27(10W)/1 phase	56	40	18										

Operating Temperature: -40~+85°C