



SENTRON, Fuse switch disconnecter 3NP1, 3-pole, NH00, 160 A, for Rittal busbar system 60 mm, flat terminal, Cover level 32/70 mm

Model	
product designation	3NP1 fuse switch disconnecter
busbar design	busbar thickness 5 or 10 mm
design of the safety monitoring	Without
design of the load switch strip form	No
type of the driving mechanism motor drive	No
General technical data	
number of poles	3
type of device	For Rittal 60 mm busbar system
size of disconnecting link	00 and 000
size of fuse link	NH000, NH00
let-through current with closed switch maximum	23 kA
mechanical service life (operating cycles) typical	2 000
I <sup>2</sup> t value with closed switch maximum	223 kA <sup>2</sup> .s
power factor	
• at AC-22 B	0.65
• at AC-23 B	0.45
• with capacitive load	-0.25
fuse system	LV HRC fuse
degree of pollution	3
Voltage	
insulation voltage	
• rated value	690 V
• with degree of pollution 3 at AC rated value	690 V
• with degree of pollution 2 at AC rated value	1 000 V
power factor at AC-21 B	0.95
surge voltage resistance rated value	8 kV
operational current	
• at 35 °C rated value	160 A
• at 40 °C rated value	155 A
• at 45 °C rated value	145 A
• at 50 °C rated value	140 A
• at 55 °C rated value	133 A
• at AC-21 B at 240 V rated value	160 A
• at AC-21 B at 400 V rated value	160 A
• at AC-21 B at 500 V rated value	160 A
• at AC-21 B at 690 V rated value	160 A
• at AC-22 B at 240 V rated value	160 A
• at AC-22 B at 400 V rated value	160 A
• at AC-22 B at 500 V rated value	160 A

<ul style="list-style-type: none"> <li>• at AC-22 B at 690 V rated value</li> <li>• at AC-23 B at 690 V rated value</li> <li>• at AC-23 B at 500 V rated value</li> <li>• at AC-23 B at 400 V rated value</li> <li>• at AC-23 B at 240 V rated value</li> <li>• at DC-21 B at 120 V rated value</li> <li>• at DC-21 B at 240 V rated value</li> <li>• at DC-21 B at 440 V rated value</li> <li>• at DC-22 B at 120 V rated value</li> <li>• at DC-22 B at 240 V rated value</li> <li>• at DC-22 B at 440 V rated value</li> <li>• at DC-23 B at 120 V rated value</li> <li>• at DC-23 B at 240 V rated value</li> <li>• at DC-23 B at 440 V rated value</li> </ul>	125 A 35 A 63 A 160 A 160 A 160 A 160 A 160 A 160 A 160 A 160 A 125 A 100 A 100 A 63 A
let-through current with high-speed activation maximum permissible	15 kA
operating voltage	
<ul style="list-style-type: none"> <li>• at AC rated value maximum</li> <li>• at DC rated value</li> <li>• at DC rated value maximum</li> </ul>	690 V 440 V 440 V
<b>Protection class</b>	
protection class IP	
<ul style="list-style-type: none"> <li>• with closed switch with cover or cable lug cover</li> <li>• with closed switch without cover or cable lug cover</li> <li>• open</li> </ul>	IP40 IP30 IP20
<b>Dissipation</b>	
power loss [W]	
<ul style="list-style-type: none"> <li>• with conventional rated thermal current without fuse per pole</li> <li>• with conventional rated thermal current without fuse per device</li> <li>• for rated value of the current at AC in hot operating state per pole</li> <li>• of the fuse per fuse maximum</li> </ul>	5 W 15 W 17 W 12 W
<b>Main circuit</b>	
operational current	
<ul style="list-style-type: none"> <li>• rated value</li> <li>• with capacitive load at 400 V rated value</li> <li>• with capacitive load at 500 V rated value</li> </ul>	160 A 72 A 55 A
<b>Auxiliary circuit</b>	
number of CO contacts for auxiliary contacts	0
number of NC contacts for auxiliary contacts	0
number of NO contacts for auxiliary contacts	0
<b>Suitability</b>	
suitability for use	
<ul style="list-style-type: none"> <li>• main switch</li> <li>• switch disconnecter</li> <li>• EMERGENCY OFF switch</li> <li>• safety switch</li> <li>• maintenance/repair switch</li> </ul>	No Yes No Yes Yes
<b>Product details</b>	
product component	
<ul style="list-style-type: none"> <li>• undervoltage release</li> <li>• undervoltage release with leading contact</li> </ul>	No No
product feature sealable	Yes
product extension auxiliary switch	Yes
<b>product extension optional</b>	
<ul style="list-style-type: none"> <li>• locking capability</li> <li>• phase failure monitoring</li> <li>• fuse monitoring</li> <li>• voltage trigger</li> <li>• overvoltage protection monitoring</li> </ul>	Yes Yes Yes No Yes

Product function	
product function overvoltage protection monitoring	No
Connections	
arrangement of electrical connectors for main current circuit	other
connectable conductor cross-section for main contacts	
<ul style="list-style-type: none"> <li>• solid or stranded minimum</li> <li>• solid or stranded maximum</li> <li>• stranded minimum</li> <li>• stranded maximum</li> </ul>	2.5 mm <sup>2</sup> 95 mm <sup>2</sup> 2.5 mm <sup>2</sup> 95 mm <sup>2</sup>
tightening torque with screw-type terminals	
<ul style="list-style-type: none"> <li>• minimum</li> <li>• maximum</li> </ul>	10 N·m 12 N·m
type of connectable conductor cross-sections of the laminated conductors maximum	24 x 12 mm
type of connection technology	Flat terminal

Mechanical Design	
height	215.1 mm
width	105.8 mm
width of the busbar	
<ul style="list-style-type: none"> <li>• minimum</li> <li>• maximum</li> </ul>	12 mm 30 mm
depth	134.5 mm
fastening method	busbar
fastening method	
<ul style="list-style-type: none"> <li>• floor mounting</li> <li>• rail mounting</li> </ul>	No Yes
mounting position	horizontal/vertical
busbar center-to-center spacing	60 mm
net weight	0.98 kg

Environmental conditions	
ambient temperature during operation	
<ul style="list-style-type: none"> <li>• minimum</li> <li>• maximum</li> </ul>	-25 °C 55 °C
ambient temperature during storage	
<ul style="list-style-type: none"> <li>• minimum</li> <li>• maximum</li> </ul>	-50 °C 80 °C

Certificates	
reference code according to IEC 81346-2	Q

### Approvals Certificates

#### General Product Approval



[Confirmation](#)



[Miscellaneous](#)

General Product Approval	Test Certificates	Marine / Shipping	other
--------------------------	-------------------	-------------------	-------



[Special Test Certificate](#)

[Type Test Certificates/Test Report](#)



[Confirmation](#)

other	Environment
-------	-------------

[Miscellaneous](#)

[Environmental Confirmations](#)

[Environmental Confirmations](#)

Further information

Information on the packaging

<https://support.industry.siemens.com/cs/ww/en/view/109813875>

Information- and Downloadcenter (Catalogs, Brochures,...)

<http://www.siemens.com/lowvoltage/catalogs>

Industry Mall (Online ordering system)

<https://mall.industry.siemens.com/mall/en/en/Catalog/product?mlfb=3NP1133-1JC10>

Service&Support (Manuals, Certificates, Characteristics, FAQs,...)

<https://support.industry.siemens.com/cs/ww/en/ps/3NP1133-1JC10>

Image database (product images, 2D dimension drawings, 3D models, device circuit diagrams, ...)

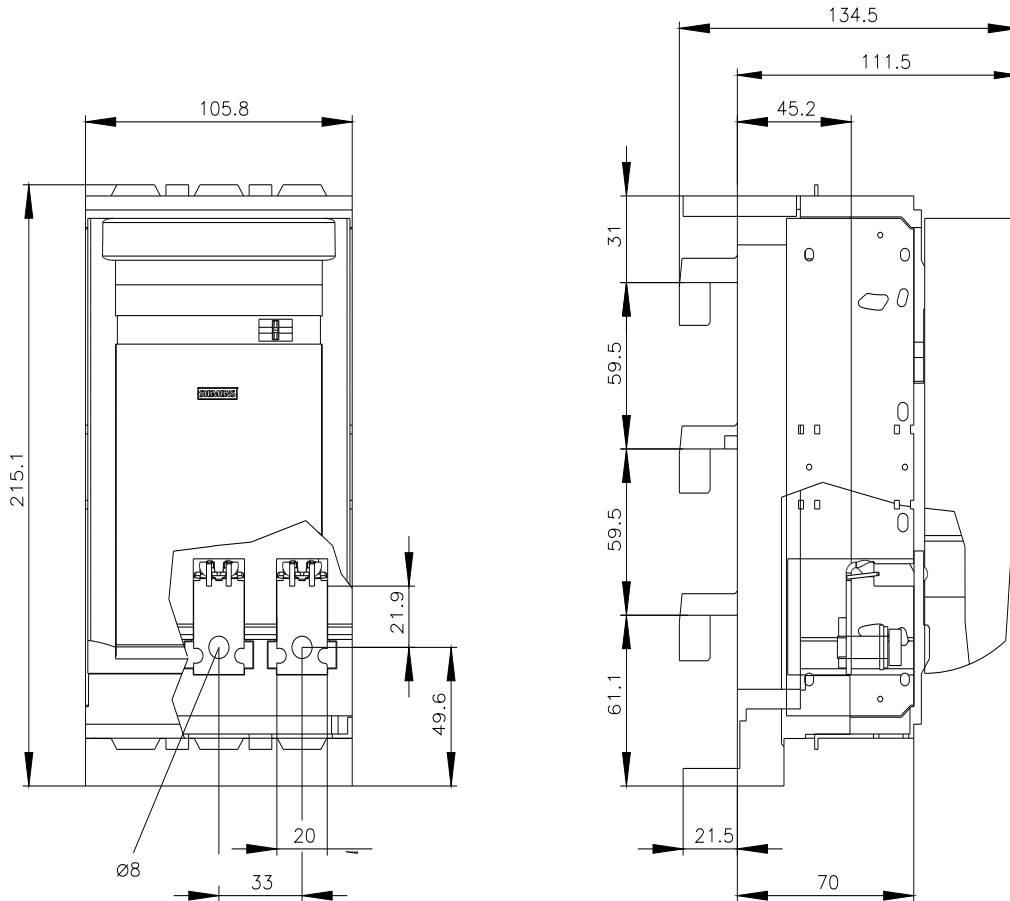
[http://www.automation.siemens.com/bilddb/cax\\_en.aspx?mlfb=3NP1133-1JC10](http://www.automation.siemens.com/bilddb/cax_en.aspx?mlfb=3NP1133-1JC10)

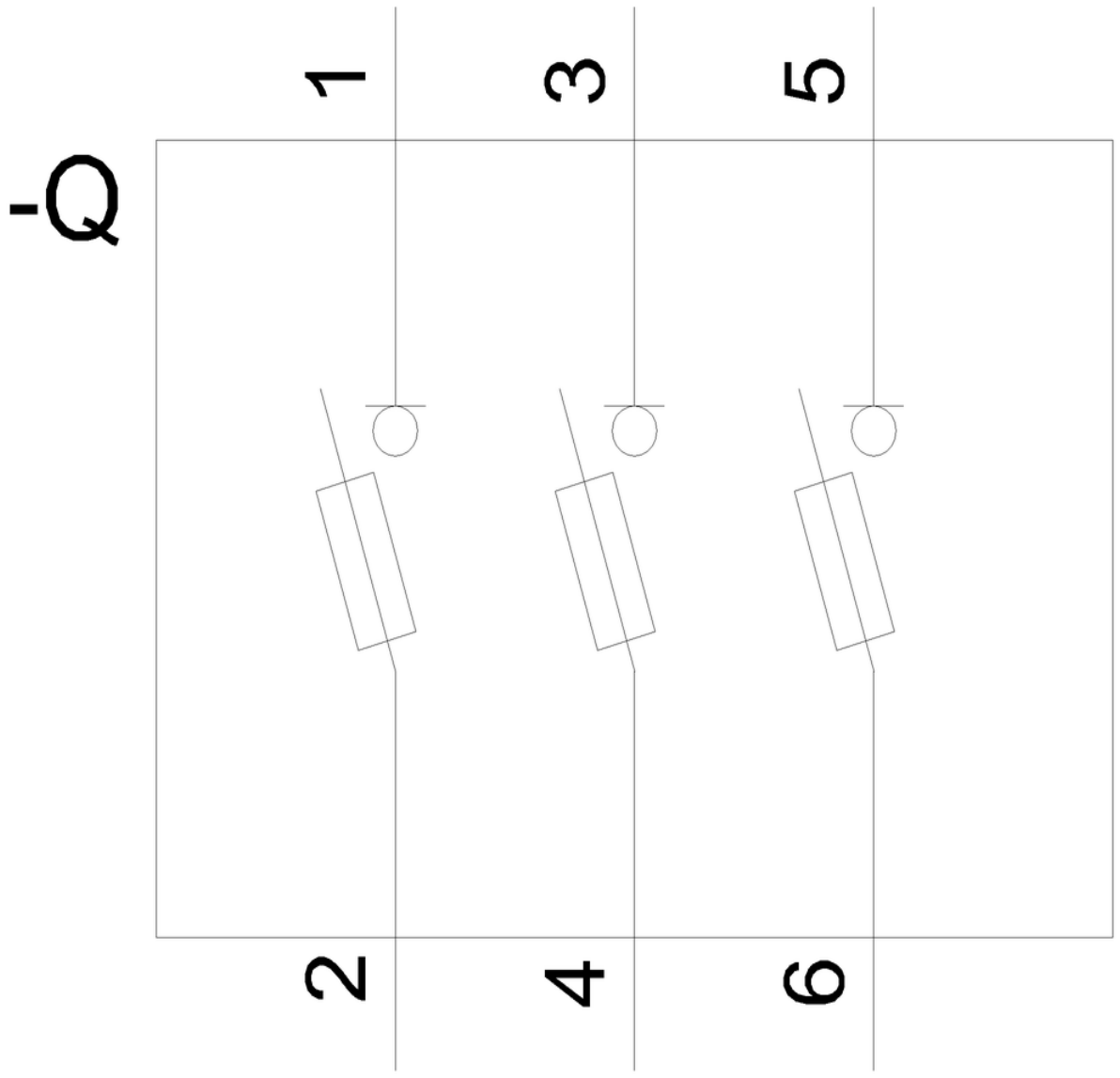
CAX-Online-Generator

<http://www.siemens.com/cax>

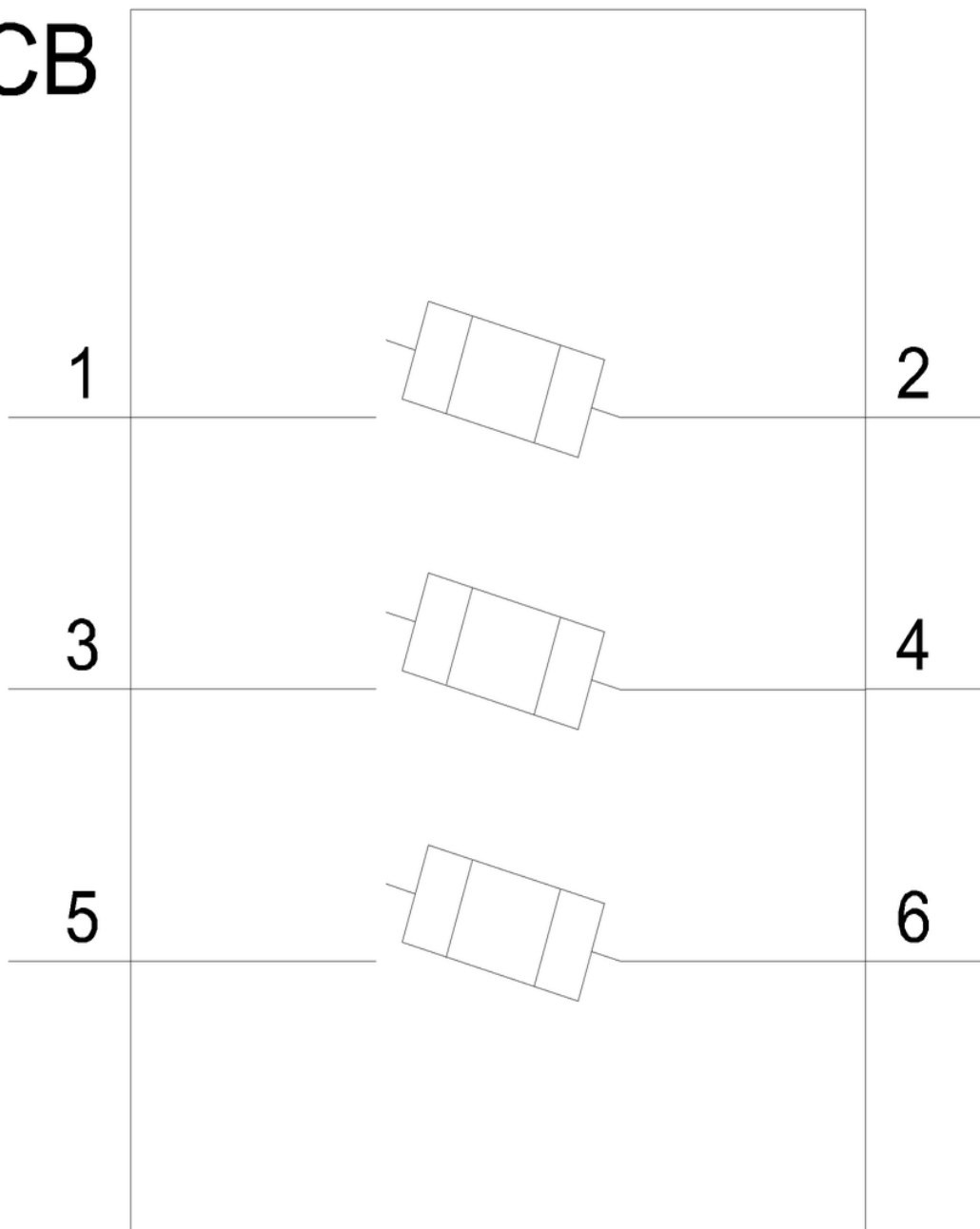
Tender specifications

<http://www.siemens.com/specifications>





# CB



last modified:

12/16/2020 