

Customer Information Sheet

DRAWING No.: S1711-XX

IF IN DOUBT - ASK

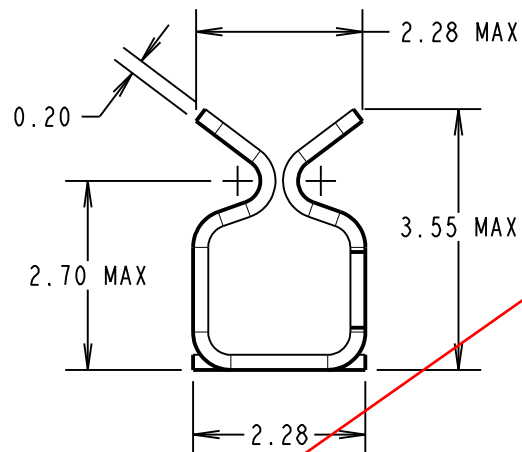
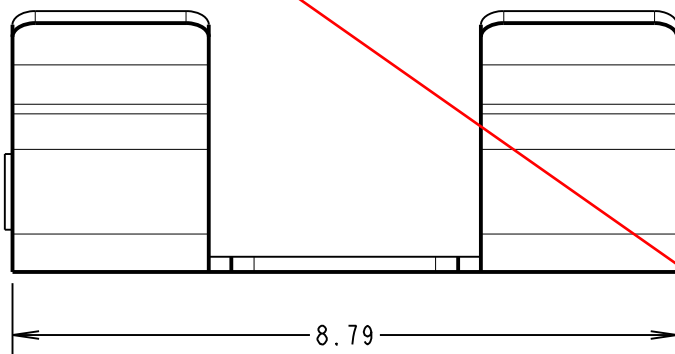
©

NOT TO SCALE

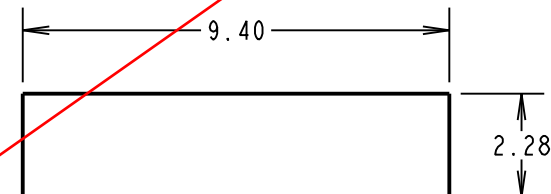
THIRD ANGLE PROJECTION

ALL DIMENSIONS IN mm

OBSOLETE



RECOMMENDED PAD LAYOUT



ORDER CODE:

S1711-XX

FINISH:

06 = TIN/LEAD OVER NICKEL
46 = 100% TIN OVER NICKEL

NOTES:

1. FOR TAPE AND REELED VERSION, SEE DRAWING S1711-XXR.
2. SUPPLIED IN A STRIP OF 100, PACKED IN A BAG.

SPECIFICATION:

MATERIAL = BERYLLIUM COPPER

FINISH:

06 = 2.5-3.5 μ TIN/LEAD,
OVER 2.0-4.0 μ NICKEL
46 = 2.4-3.6 μ 100% TIN,
OVER 2.4-3.6 μ NICKEL

ELECTRICAL:

CONTACT RESISTANCE = 20m Ω MAX

ENVIRONMENTAL:

OPERATING TEMPERATURE = -40°C TO +125°C

MECHANICAL:

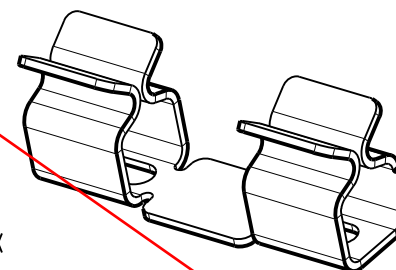
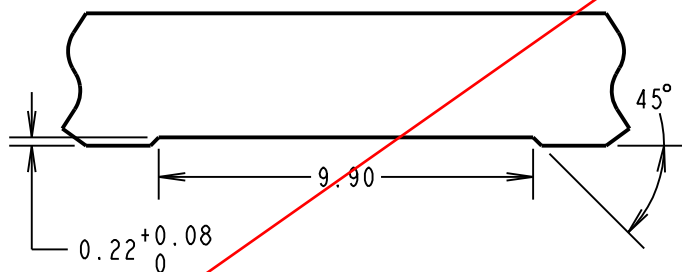
INSERTION FORCE (AFTER CONDITIONING) = 4N MAX

WITHDRAWAL FORCE = 0.5N MIN

DURABILITY = 20 INSERTIONS MINIMUM

SHIELD THICKNESS = 0.17mm - 0.30mm

RECOMMENDED SHIELD CAN CUT OUT



MSP	9	03.08.17	20719
NAME	ISS.	DATE	C/NOTE
APPROVED: M.PERREN			
CHECKED: S.BENNETT			
DRAWN: J.ENRIGHT			
CUSTOMER REF.:			
ASSEMBLY DRG:			

HARWIN

www.harwin.com
technical@harwin.com

THIS DRAWING AND ANY
INFORMATION OR DESCRIPTIVE
MATTER SET OUT HEREON ARE
CONFIDENTIAL AND COPYRIGHT
PROPERTY OF THE HARWIN
GROUP AND MUST NOT BE
DISCLOSED, LOANED, COPIED
OR USED FOR MANUFACTURING,
TENDERING OR FOR ANY
OTHER PURPOSE WITHOUT
THEIR WRITTEN PERMISSION.

TOLERANCES

X. = ± 1 mm
X.X = ± 0.50 mm
X.XX = ± 0.10 mm
X.XXX = ± 0.01 mm

ANGLES = $\pm 5^\circ$

UNLESS STATED

MATERIAL:

SEE ABOVE

FINISH: SEE ABOVE

S/AREA: mm²

TITLE:

SMT RFI SHIELD CLIP
(LOOSE)

DRAWING NUMBER:

S1711-XX

SHT

2 OF 2

Mouser Electronics

Authorized Distributor

Click to View Pricing, Inventory, Delivery & Lifecycle Information:

Harwin:

[S1711-06](#) [S1711-06R](#) [S1711-46](#)