



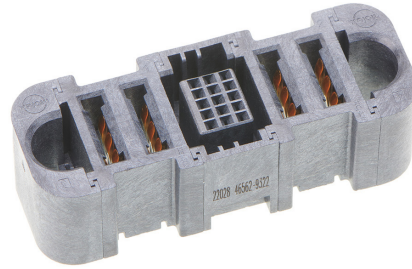
**Part Number :** [465629322](#)

**Product Description :** EXTreme Ten60Power Vertical Receptacle with Side Guides, 2 DC Power Circuits, 15 Signal Circuits, 2 DC Power Circuits, Press Fit Tail

**Series Number :** 46562

**Status :** Active

**Product Category :** Board-to-Board Connectors



---

## Documents & Resources

### Drawings

[465629322\\_sd.pdf](#)

[465621001-PK-000.pdf](#)

### 3D Models and Design Files

[465629322\\_stp.zip](#)

### Specifications


[PS-46436-100-001.pdf](#)

[464361000-TS-000.pdf](#)

---

## Product Environment Compliance

### Compliance

GADSL/IMDS	Compliant with Exemption 44; 34; 33
China RoHS	
EU ELV	Not Relevant
Low-Halogen Status	Low-Halogen per IEC 61249-2-21
REACH SVHC	Not Contained per D(2024)4144-DC (27 June 2024)
EU RoHS	Compliant per EU 2015/863

### Multiple Part Product Compliance Statements

- Eu RoHS
- REACH SVHC
- Low-Halogen

## Multiple Part Industry Compliance Documents

- IPC 1752A Class C
- IPC 1752A Class D
- Molex Product Compliance Declaration
- IEC-62474
- chemSHERPA (xml)

## EU RoHS Certificate of Compliance

---

### Part Details

#### General

Status	Active
Category	Board-to-Board Connectors
Series	46562
Description	EXTreme Ten60Power Vertical Receptacle with Side Guides, 2 DC Power Circuits, 15 Signal Circuits, 2 DC Power Circuits, Press Fit Tail
Application	Board-to-Board, Power, Signal
Comments	See Product Specification for details
Component Type	PCB Receptacle
Keyword	Ten60
Product Name	EXTreme Ten60Power
UPC	195842673106

#### Agency

CSA	LR19980
UL	E29179

#### Electrical

Current - Maximum per Contact	60.0A
Grounding to PCB	No
Voltage - Maximum	600V AC / 250V DC

#### Physical

Circuits (Loaded)	19
Circuits (maximum)	19

Color - Resin	Black
Durability (mating cycles max)	200
Flammability	94V-0
Glow-Wire Capable	No
Guide to Mating Part	Side, Yes
Keying to Mating Part	None
Lock to Mating Part	No
Material - Metal	High Conductivity Copper
Material - Plating Mating	Gold
Material - Plating Termination	Tin
Material - Resin	Liquid Crystal Polymer
Net Weight	14.066/g
Number of Rows	1, 5
Orientation	Vertical
Packaging Type	Tray
PC Tail Length	2.50mm, 3.28mm
PCB Locator	No
PCB Retention	Yes
PCB Thickness - Recommended	1.58mm
Pitch - Mating Interface	2.00mm, 5.50mm
Plating min - Mating	0.762µm
Plating min - Termination	2.540µm
Polarized to Mating Part	Yes
Polarized to PCB	Yes
(p)ower-(s)ignal Configuration	2p - 15s - 2p
Stackable	No
Temperature Range - Operating	-40° to +105°C
Termination Interface Style	Through Hole - Compliant Pin

---

## Mates With / Use With

### Mates with Part(s)

Description	Part Number
-------------	-------------

EXTreme Ten60Power Right-Angle Plug with Side Guides, 2 DC Power Circuits, 15 Signal Circuits, 2 DC Power Circuits, Press Fit Tail	<u>464379322</u>
--	------------------

---

This document was generated on Oct 26, 2024