



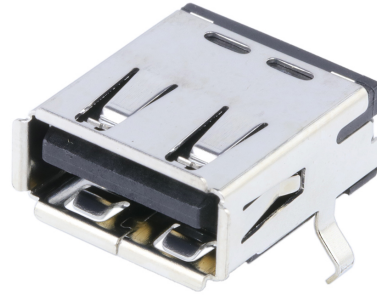
**Part Number :** [676430910](#)

**Product Description :** Universal Serial Bus (USB) Shielded I/O Receptacle, Right-Angle, Type A, Black Polyester, Gold (Au) Flash, PCB Thickness 1.60mm, without Upper Flange, Lead-Free

**Series Number :** 67643

**Status :** Active

**Product Category :** I/O Connectors



---

## Documents & Resources

### Drawings

[Drawing 676430910\\_sd.pdf](#)

[Packaging Design Drawing PK-67643-002-001.pdf](#)

### 3D Models and Design Files

[3D Model 676430910\\_stp.zip](#)

### Specifications

[Product Specification PS-67643-003-001.pdf](#)

[Test Summary TS-67643-003-001.pdf](#)

---

## Product Environment Compliance

### Compliance

GADSL/IMDS	Compliant with Exemption 34; 33
China RoHS	
EU ELV	Not Relevant
Low-Halogen Status	Not Low-Halogen per IEC 61249-2-21
REACH SVHC	Not Contained per D(2024)4144-DC (27 June 2024)
EU RoHS	Compliant per EU 2015/863

### Multiple Part Product Compliance Statements

- Eu RoHS
- REACH SVHC
- Low-Halogen

## Multiple Part Industry Compliance Documents

- IPC 1752A Class C
- IPC 1752A Class D
- Molex Product Compliance Declaration
- IEC-62474
- chemSHERPA (xml)

## EU RoHS Certificate of Compliance

---

### Part Details

#### General

Status	Active
Category	I/O Connectors
Series	67643
Description	Universal Serial Bus (USB) Shielded I/O Receptacle, Right-Angle, Type A, Black Polyester, Gold (Au) Flash, PCB Thickness 1.60mm, without Upper Flange, Lead-Free
Application	Wire-to-Board
Comments	Without Upper Flange, Not for IR Reflow Process
Component Type	Receptacle
Product Family	USB Connectors: USB Type-A, USB Type-B, and USB Type-C Plugs and Receptacles
Product Name	USB
Standard	USB 2.0
Type	A
UPC	822350071598

#### Electrical

Current - Maximum per Contact	1.5A
Shield Type	Full Shield
Shielded	Yes
Voltage - Maximum	30V DC

#### Physical

Circuits (Loaded)	4
-------------------	---

Circuits (maximum)	4
Color - Resin	Black
Gender	Female
Keying to Mating Part	Yes
Lock to Mating Part	Yes
Material - Plating Mating	Gold
Material - Plating Termination	Tin
Mounting Style	Top-Mount
Net Weight	1.860/g
Number of Rows	1
Orientation	Right Angle
Packaging Type	Tray
Panel Mount	Yes
PC Tail Length	2.60mm
PCB Locator	Yes
PCB Retention	Yes
PCB Thickness - Recommended	1.60mm
Pitch - Mating Interface	2.00mm, 2.50mm
Pitch - Termination Interface	2.00mm, 2.50mm
Polarized to Mating Part	Yes
Polarized to PCB	Yes
Ports	1
Temperature Range - Operating	-40° to +85°C
Termination Interface Style	Through Hole
Waterproof / Dustproof	No

#### Solder Process Data

Lead-Free Process Capability	WAVE
------------------------------	------

---

#### Mates With / Use With

##### Mates with Part(s)

Description	Part Number
Mates With	USB Type A Plug

---

---

This document was generated on Sep 19, 2024