

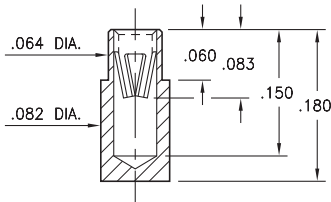
# PIN RECEPTACLES

FOR .025" - .037" DIAMETER PINS AND .025" SQUARE PINS

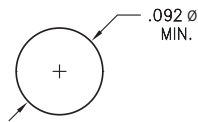
## 4282

4282-0-15-XX-47-27-10-0

Surface mount



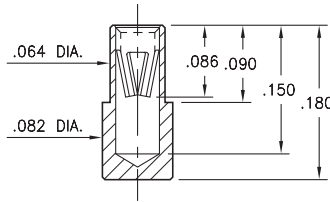
P.C.B. Layout



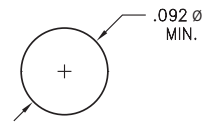
## 5769

5769-0-15-XX-47-27-10-0

Surface mount



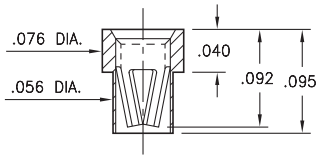
P.C.B. Layout



## 2250

2250-0-15-XX-47-XX-10-0

Solder mount in .058 min. mounting hole




**SPECIFICATIONS:**

**Shell Material:** Brass Alloy 360, 1/2 Hard

**Contact Material:** Beryllium Copper Alloy 172, HT

**Dimensions: Inches**

**Tolerances On:** Lengths: ±.005  
Diameters: ±.002  
Angles: ± 2°



**ORDER CODE:** XXXX - X - XX - XX - 47 - XX - XX - 0

**BASIC PART #** →

- SPECIFY SHELL FINISH:**
- ◆ 80 200 μ" TIN OVER NICKEL (RoHS)
  - ◆ 15 10 μ" GOLD OVER NICKEL (RoHS)

**SPECIFY CONTACT FINISH:**

- ◆ 27 30 μ" GOLD OVER NICKEL (RoHS)

**SELECT CONTACT:**

**#47 CONTACT (DATA ON PAGE 256)**

(For alternate contact choices, see group D on page 248)