

2227316-1 ✓ ACTIVE

SFP28 | DWDM

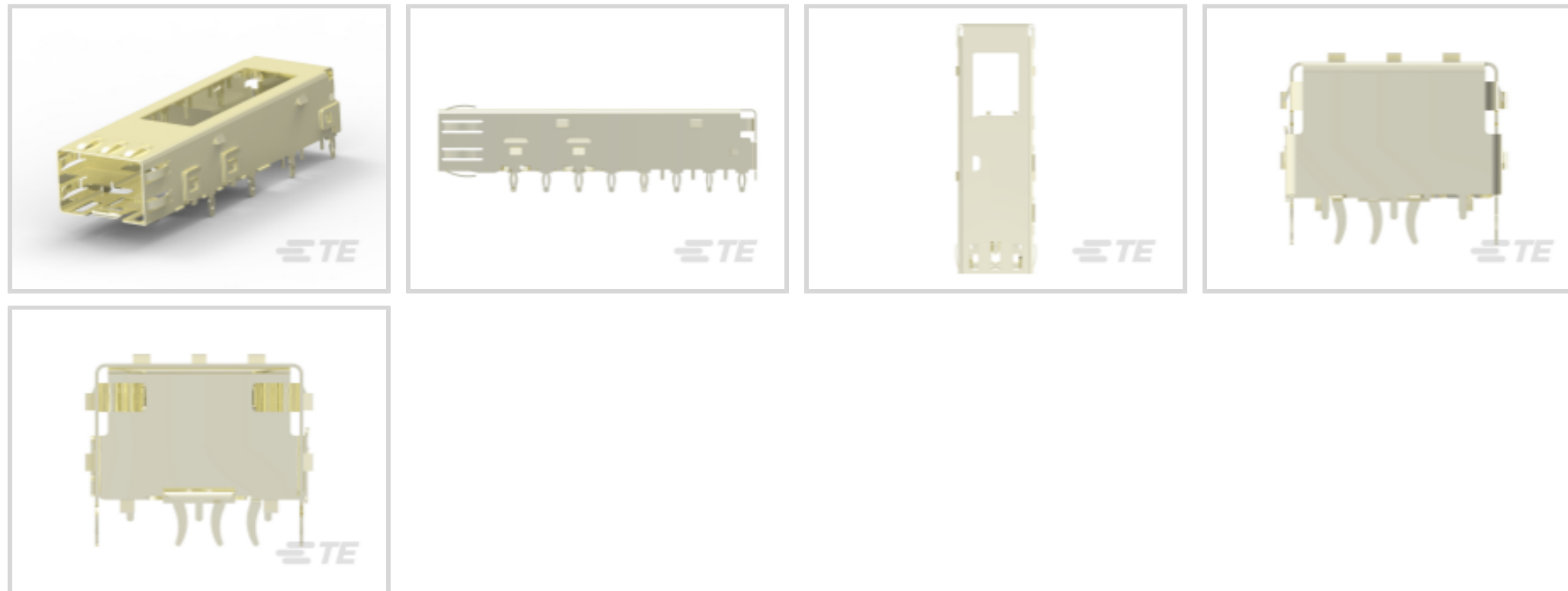
TE Internal #: 2227316-1

SFP, Cage, Operating Temperature Range -55 – 85 °C [-67 – 185 °F], Data Rate (Max) 4 Gb/s, 1 Ports, Port Matrix Configuration 1 x 1

[View on TE.com >](#)



Connectors > Pluggable IO Connectors & Cages > SFP Connectors



Pluggable I/O Product Type: **Cage**

Sealable: **No**

Operating Temperature Range: **-55 – 85 °C [-67 – 185 °F]**

Data Rate (Max): **4 Gb/s**

Number of Ports: **1**

[All SFP Connectors \(10\)](#)

Features

Product Type Features

Cage Type	Single
Pluggable I/O Product Type	Cage
Sealable	No
Form Factor	SFP

Configuration Features

Number of Ports	1
Port Matrix Configuration	1 x 1

Electrical Characteristics

Data Rate (Max)	4 Gb/s
-----------------	--------

Termination Features

Termination Post & Tail Length	3 mm [.118 in]
Termination Method to PCB	Through Hole - Press-Fit

Housing Features



Cage Material	Stainless Steel
---------------	-----------------

Dimensions

PCB Thickness (Recommended)	1.5 mm[.059 in]
-----------------------------	-----------------

Usage Conditions

Operating Temperature Range	-55 – 85 °C[-67 – 185 °F]
-----------------------------	---------------------------

Operation/Application

Pluggable I/O Applications	SFP
----------------------------	-----

Heat Sink Compatible	Yes
----------------------	-----

Packaging Features

Packaging Method	Box
------------------	-----

Other

Included Lightpipe	No
--------------------	----

EMI Containment Feature Type	Internal/External EMI Springs
------------------------------	-------------------------------

Product Compliance

[For compliance documentation, visit the product page on TE.com>](#)

EU RoHS Directive 2011/65/EU	Compliant
------------------------------	-----------

EU ELV Directive 2000/53/EC	Compliant
-----------------------------	-----------

China RoHS 2 Directive MIIT Order No 32, 2016	No Restricted Materials Above Threshold
---	---

EU REACH Regulation (EC) No. 1907/2006	Current ECHA Candidate List: JUNE 2024 (241) Candidate List Declared Against: JUNE 2024 (241) Does not contain REACH SVHC
--	---

Halogen Content	Low Halogen - Br, Cl, F, I < 900 ppm per homogenous material. Also BFR/CFR/PVC Free
-----------------	---

Solder Process Capability	Not applicable for solder process capability
---------------------------	--

Product Compliance Disclaimer

This information is provided based on reasonable inquiry of our suppliers and represents our current actual knowledge based on the information they provided. This information is subject to change. The part numbers that TE has identified as EU RoHS compliant have a maximum concentration of 0.1% by weight in homogenous materials for lead, hexavalent chromium, mercury, PBB, PBDE, DBP, BBP, DEHP, DIBP, and 0.01% for cadmium, or qualify for an exemption to these limits as defined in the Annexes of Directive 2011/65/EU (RoHS2). Finished electrical and electronic equipment products will be CE marked as required by Directive 2011/65/EU. Components may not be CE marked. Additionally, the part numbers that TE has identified as EU ELV compliant have a maximum concentration of 0.1% by weight in homogenous materials for lead, hexavalent chromium, and mercury, and 0.01% for cadmium, or qualify for an exemption to these limits as defined in the Annexes of Directive 2000/53/EC (ELV). Regarding the REACH Regulation, the information TE provides

on SVHC in articles for this part number is based on the latest European Chemicals Agency (ECHA) 'Guidance on requirements for substances in articles' posted at this URL: <https://echa.europa.eu/guidance-documents/guidance-on-reach>

Compatible Parts



TE Part # CAT-SF59-C76264
SFP Connectors



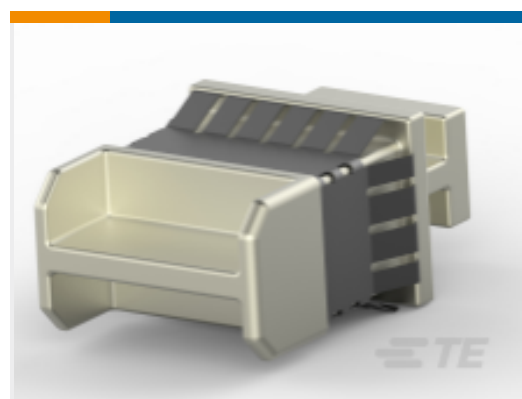
TE Part # 1367147-1
SFP COVER, UNPLATED



TE Part # 1367147-3
SFP COVER, UNPL, NO LOGO



TE Part # 1761394-1
DUST COVER, SFP, GANGED & STACKED



TE Part # 1888901-1
SFP+ EMI Plug



TE Part # 2215077-3
ASSY, SEATING TOOL, SFP

Also in the Series | DWDM



Pluggable IO Connectors & Cages(4)

Customers Also Bought



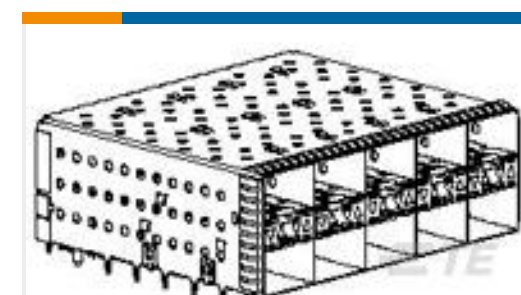
TE Part #5650916-5
ASSY,PIN,EUROCARD,TYPE C/2,LEA



TE Part #1-207825-5
RCPT ASSY,POSTED,SER 1,SZ 11-4



TE Part #6-1437652-8
6PCV-04-007=ASSEMBLY



TE Part #2132403-5
2X5 SFP+ w/ Springs, 4 LP Sn



TE Part #1-5767007-1
MICT,260PLUG,152,ASSY,.025,REC



TE Part #6469048-1
HMZD 4PR RA HDR 80P ASSY LF



TE Part #1551920-4
zQSFP+ connector assembly



TE Part #2007656-9
MICTOR RECEPT ASSY, 76 POS.,T&



TE Part #6600150-1
MBXL R/A HDR DB 4P+24S

Documents

Product Drawings

DWDM Cage Assembly, 11 PF

English

CAD Files

3D PDF

3D

Customer View Model

[ENG_CVM_CVM_2227316-1_A.2d_dxf.zip](#)

English

Customer View Model

[ENG_CVM_CVM_2227316-1_A.3d_igs.zip](#)

English

Customer View Model

[ENG_CVM_CVM_2227316-1_A.3d_stp.zip](#)

English

By downloading the CAD file I accept and agree to the [Terms and Conditions](#) of use.

Product Specifications

Product Specification

English