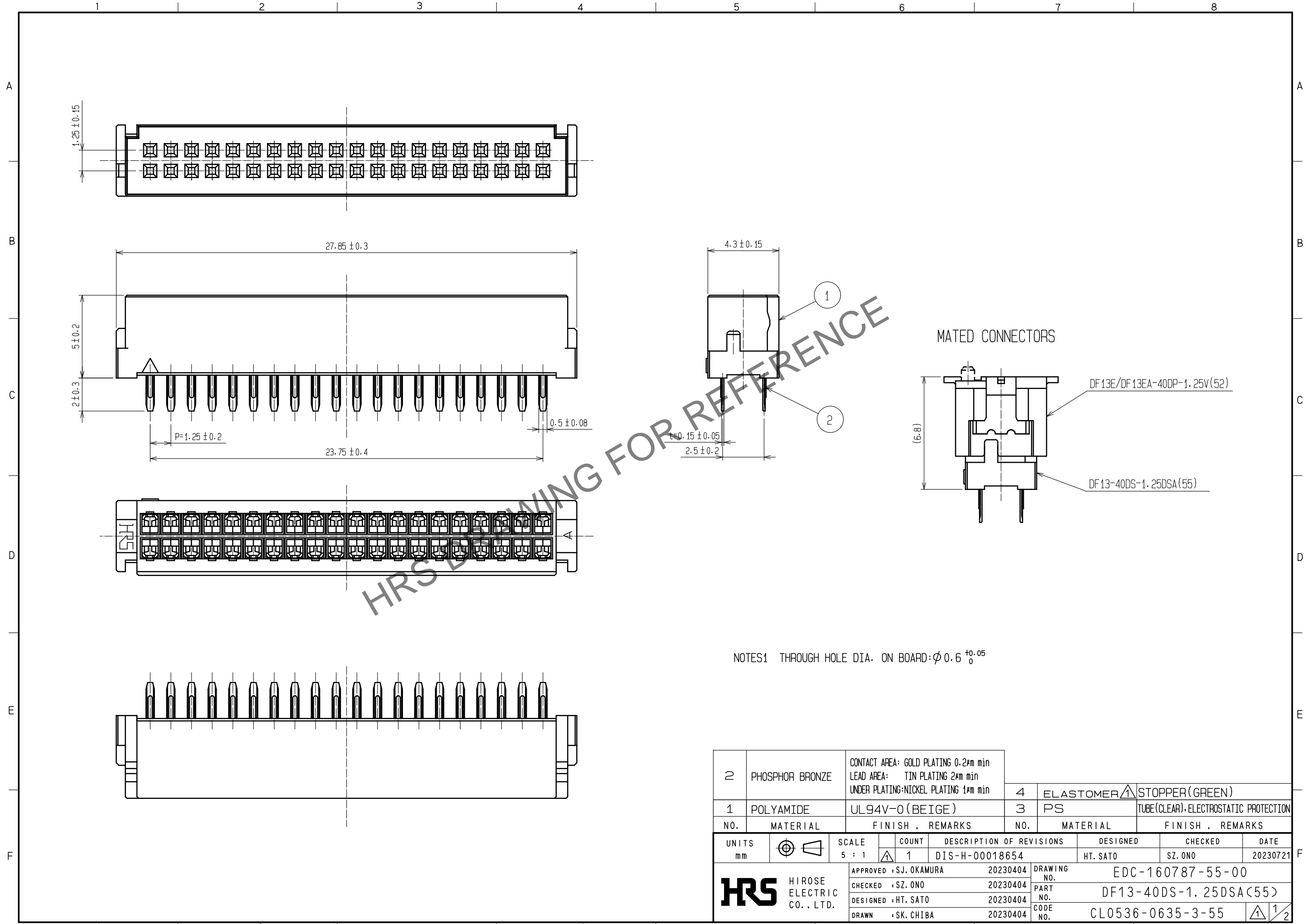


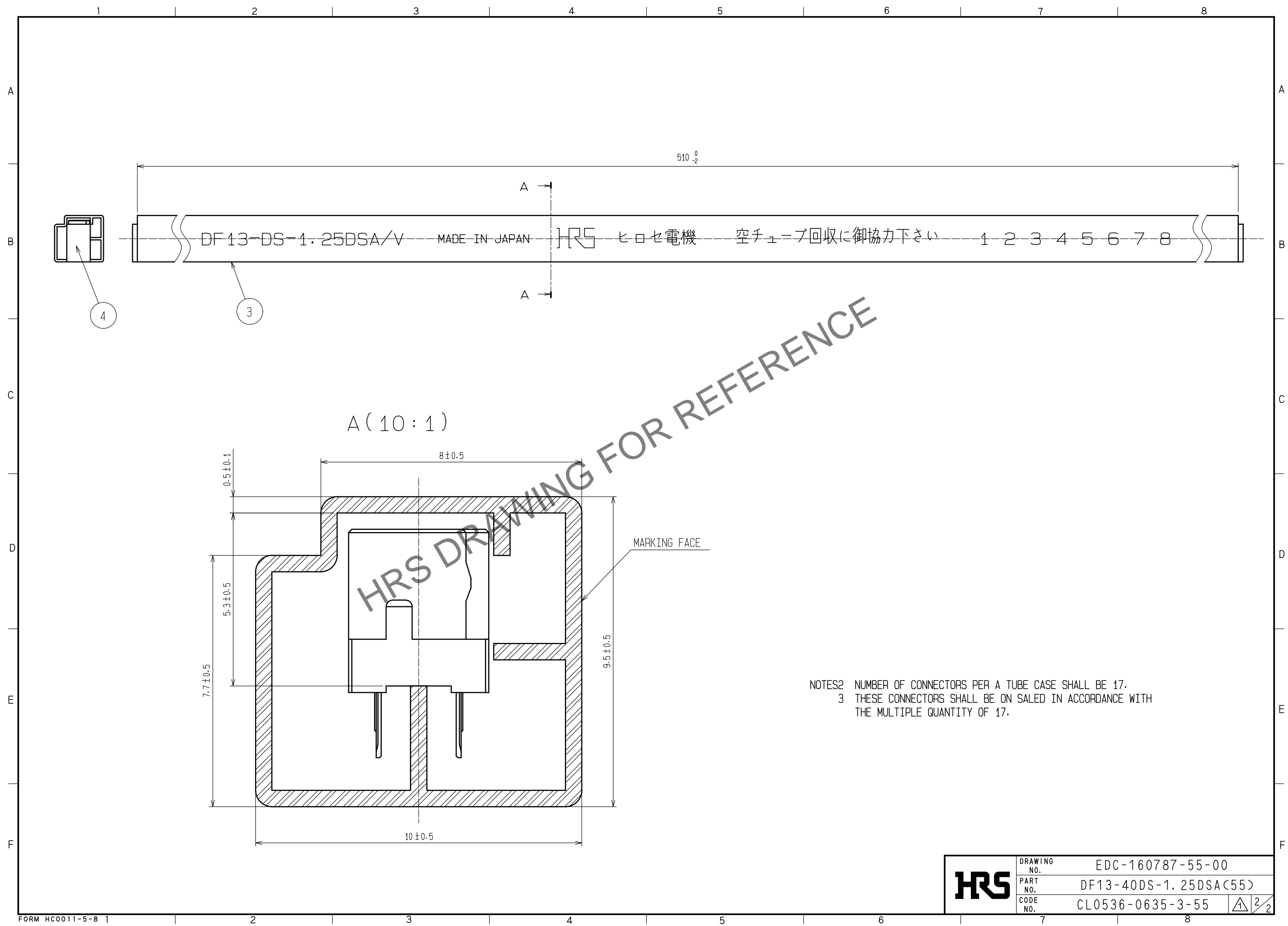
Jul.1.2024 Copyright 2024 HIROSE ELECTRIC CO., LTD. All Rights Reserved.
 In case of consideration for using Automotive equipment / device which demand high reliability, kindly contact our sales window correspondents.



2	PHOSPHOR BRONZE	CONTACT AREA: GOLD PLATING 0.2 μ m min LEAD AREA: TIN PLATING 2 μ m min UNDER PLATING: NICKEL PLATING 1 μ m min	4	ELASTOMER Δ	STOPPER (GREEN)			
1	POLYAMIDE	UL94V-0 (BEIGE)	3	PS	TUBE (CLEAR), ELECTROSTATIC PROTECTION			
NO.	MATERIAL	FINISH . REMARKS	NO.	MATERIAL	FINISH . REMARKS			
UNITS	\odot ∇	SCALE	COUNT	DESCRIPTION OF REVISIONS		DESIGNED	CHECKED	DATE
mm		5 : 1	Δ 1	DIS-H-00018654		HT. SATO	SZ. ONO	20230721
HRS HIROSE ELECTRIC CO., LTD.		APPROVED : SJ. OKAMURA	20230404	DRAWING NO. EDC-160787-55-00				
		CHECKED : SZ. ONO	20230404	PART NO. DF13-40DS-1.25DSA(55)				
		DESIGNED : HT. SATO	20230404	CODE NO. CL0536-0635-3-55				
		DRAWN : SK. CHIBA	20230404					

In case of consideration for using Automotive equipment / device which demand high reliability, kindly contact our sales window correspondents.

Jul.1.2024 Copyright 2024 HIROSE ELECTRIC CO., LTD. All Rights Reserved.



DF13-DS-1.25DSA/V MADE IN JAPAN HRS ヒロセ電機 空チューブ回収に御協力下さい 1 2 3 4 5 6 7 8

510⁰₋₂

A (10:1)

MARKING FACE

NOTES
 2 NUMBER OF CONNECTORS PER A TUBE CASE SHALL BE 17.
 3 THESE CONNECTORS SHALL BE ON SALED IN ACCORDANCE WITH THE MULTIPLE QUANTITY OF 17.

HRS	DRAWING NO.	EDC-160787-55-00	
	PART NO.	DF13-40DS-1.25DSA(55)	
	CODE NO.	CL0536-0635-3-55	△ 2/2