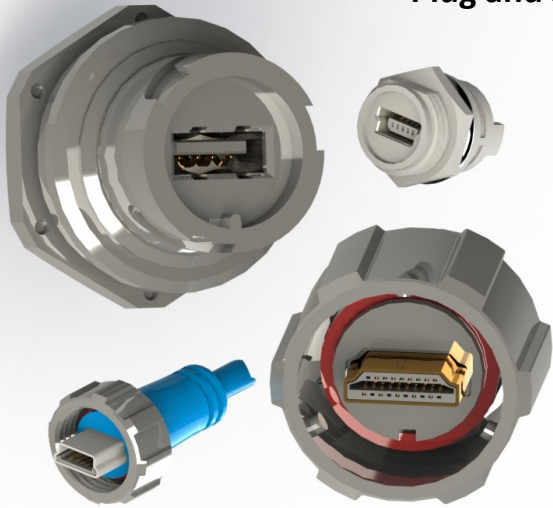




# SERIES 690W WATERPROOF USB & HDMI



## Plug and Socket , USB and HDMI Connectors



- E-SEAL Waterproof Connectors: Standard USB TypeA, Micro USB, Mini USB Type B and HDMI Type A
- Compatible with all Windows versions
- 1.2Mbps or 480Mbps communication speed
- Complies with USB1.0 (USB2.0 upon request)
- Compatible with asynchronous and isochronous data transfer methods
- Silicone rubber seals
- Secure latching system for safe mating under severe vibration or shock conditions
- Degree of Protection: IP67 as per IEC60529



### Specifications:

Insulator Material	Thermoplastic, UL 94V-0 Rated, Black color
Contact Material	Plugs and Sockets: Copper Alloy
Contact Plating	Gold Plating over Nickel underplating
Shell Material	Nickel Plated Steel
Rubber Seals	Silicone
O-Ring	Silicone
Signal Current Rating	1A Per Contact
Contact Resistance	50 Milliohms MAX
Insulation Resistance	100 Megohms MIN
Operating Temp.	-25°C To +85°C



M00-383-001 Cap is used for:  
1. 690-W04-260-014  
2. 690-W19-260-012

M00-383-002 Cap is used for:  
1. 690-W05-260-044

### Ordering Code:

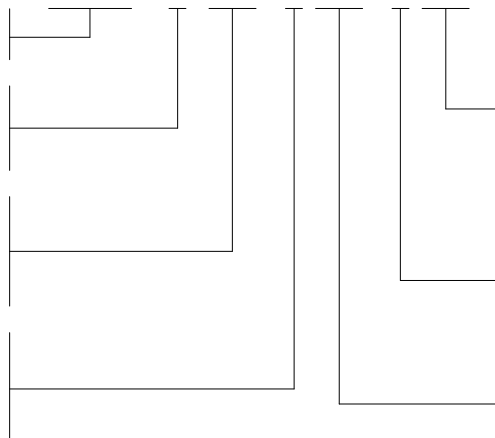
## 690-W04-260-012

SERIES:  
USB, HDMI . . . . 690

CROSS / REF:  
EDAC CODE  
WATERPROOF . . . . W

NO. OF CONTACTS:  
(STANDARD USB-A) 4 CONTACT PINS . . . . 04  
(MICRO OR MINI USB) 5 CONTACT PINS . . . . 05  
(HDMI) 19 CONTACT PINS . . . . 19

CONTACT PLATING  
Gold Flash Plating over Nickel . . . . 2  
15 µIN of Gold Plating over Nickel . . . . 3  
30 µIN of Gold Plating over Nickel . . . . 6



TYPE:  
11 . . . . HDMI TYPE A, MALE  
12 . . . . HDMI TYPE A, FEMALE  
13 . . . . USB TYPE A, MALE  
14 . . . . USB TYPE A, FEMALE  
43 . . . . MINI USB TYPE B, MALE  
44 . . . . MINI USB TYPE B, FEMALE  
83 . . . . MICRO USB, FEMALE

INSULATOR COLOR:  
0 . . . . BLACK

CONTACT CODE:  
60 . . . . STRAIGHT TYPE  
90 . . . . SMT TYPE (MICRO USB ONLY)

# Mouser Electronics

Authorized Distributor

Click to View Pricing, Inventory, Delivery & Lifecycle Information:

[EDAC:](#)

[690-W05-260-043](#) [690-W05-260-034](#) [690-W19-260-014](#) [690-W19-260-013](#) [690-W05-260-033](#)