

DATA SHEET.

DEFINITIVE [ X ]

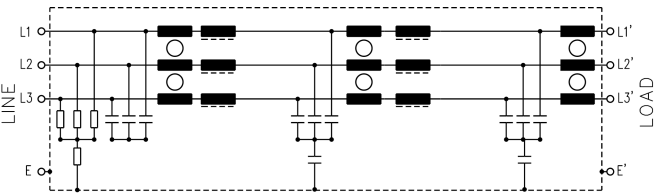
FILTER CODE: PROVISIONAL [ ]

APPROVALS:

F.L.L.D3.030A.AN.19A

CIRCUIT DIAGRAM:

ELECTRICAL SPECIFICATIONS:



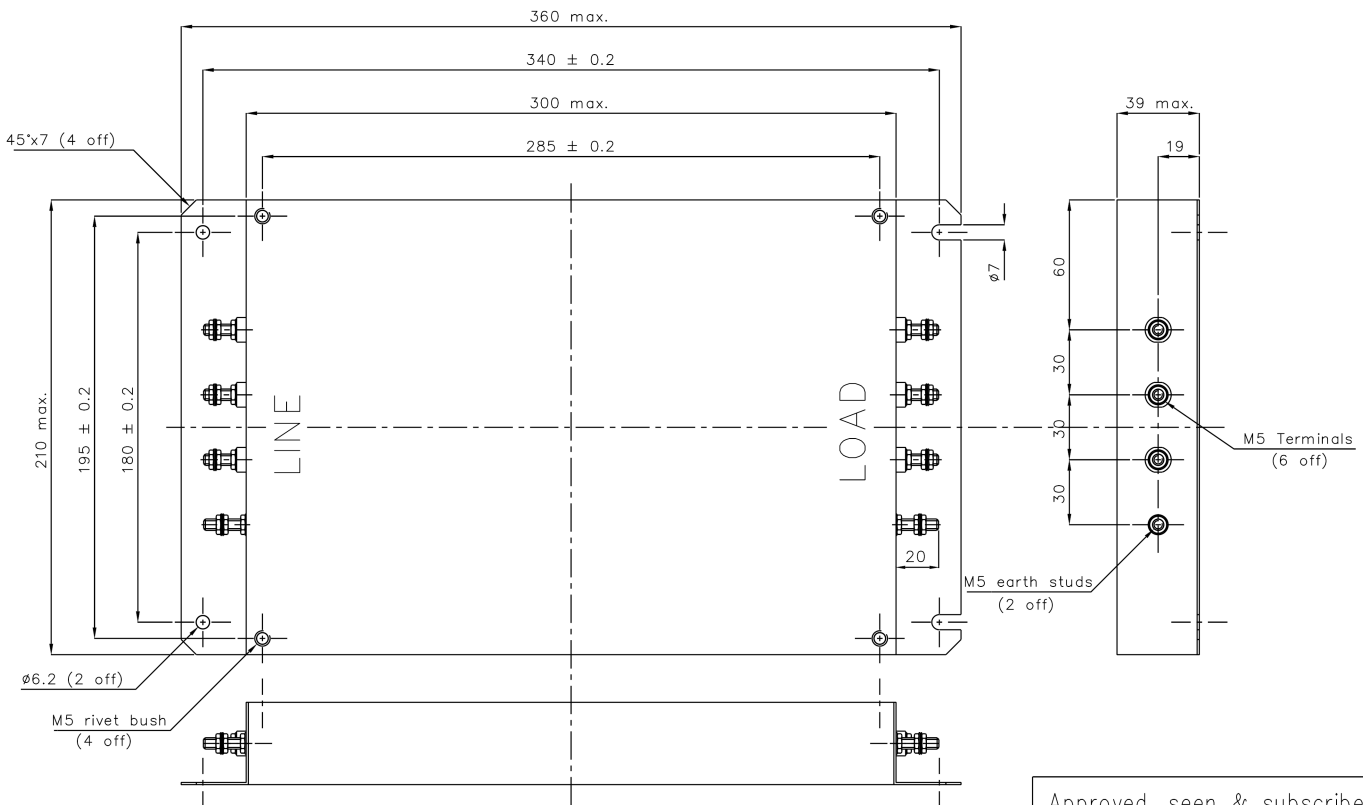
RATED VOLTAGE	:	460Vac, 50/60Hz. 10% fluctuation in voltage supply accepted.
RATED CURRENT	:	30 Amps max.
LEAKAGE CURRENT	:	11mA max @ 460Vac, 50Hz.
CLIMATIC CATEGORY	:	HPF (25/085/21)
LINE TO LINE CAPACITORS	:	9 x 2.2uF(X2) MKT.
LINE TO GROUND CAPACITORS:	:	2 x 47nF(Y).
LINE INDUCTANCE	:	4.5mH per phase.
LINE RESISTANCE	:	< 20 milliohms
VOLTAGE PROOF	:	Line to Line: 1700Vdc, 2 sec Lines to Ground: 2700Vdc, 2 sec.

MECHANICAL SPECIFICATIONS:

MANUFACTURE: Tin plated steel enclosure and lid. Electrical components sealed with self-extinguishing resin.

CONNECTIONS: All connections M5 threaded terminals with nuts and washers.

DIMENSIONS: (mm).



Approved, seen & subscribed

ISSUE: 1.  
DATE: 1st October 1997.

COMPILED BY: D.Morrison.

.....  
Customer's stamp and signature.

# Mouser Electronics

Authorized Distributor

Click to View Pricing, Inventory, Delivery & Lifecycle Information:

[KEMET:](#)

[FLLD3030AANI9A](#)