

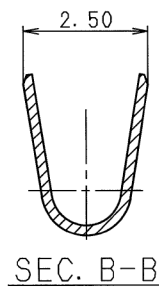
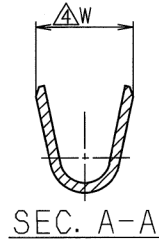
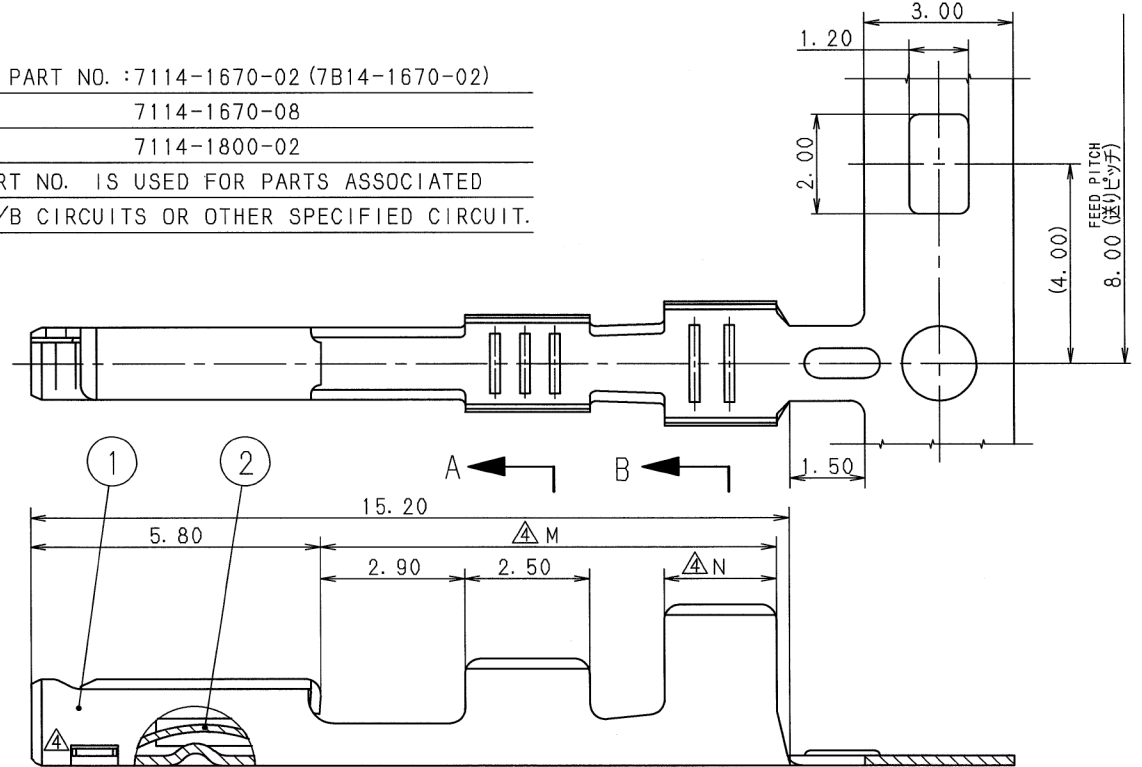
注記

- ③ ⑥ 1. 嵌合相手品番: 7114-1670-02 (7B14-1670-02)
7114-1670-08
7114-1800-02
- ④ 2. () 内品番は、A/B回路及び特別管理回路に使用する時に適用すること。

YAZAKI PART NO.	△M	△N	△W	NO.	MATL. & TREAT.	△ WIRE SIZE
7116-1670-02, △ (7B16-1670-02)	9. 15±0.1	2. 25	1. 95	①	BRASS (TIN PLATING)	CAVUS 0.3~CAVS 0.5
△ 7116-1800-02, △	9. 00±0.1	2. 10	2. 10	②	BeCU (TIN PLATING)	CAVUS 0.85
△ 7116-1670-08, △ (7B16-1670-08)	9. 15±0.1	2. 25	1. 95	①	BRASS (GOLD PLATING)	CAVUS 0.3~CAVS 0.5
				②	BeCU (GOLD PLATING)	

NOTES

- ③ ⑥ 1. MATING PART NO. : 7114-1670-02 (7B14-1670-02)
7114-1670-08
7114-1800-02
- ④ 2. () PART NO. IS USED FOR PARTS ASSOCIATED WITH A/B CIRCUITS OR OTHER SPECIFIED CIRCUIT.



△	02. 12. 16	ADDED A/B PART NO.	C02-Y472	K. I
△	97. 08. 27	ADDED TOLERANCE	C97-7842	K. U
△	97. 01. 27	CHANGED FORM & ADDED A/B PART NO. △	C97-L103	M. T
△	93. 04. 23	ADDED PART NO. ETC.	C93-P068	H. F
△	92. 06. 09	ADDED PART NO.	C92-6540	H. Y
△	91. 02. 01	CHANGED FROM	C90-7609	H. Y
△	90. 07. 24	NEW	C90-6946	H. Y
LET	DATE	REVISION RECORD	NO.	CHKD

A ←	B ←
CUSTOMER	
CUSTOMER PART NO.	CUSTOMER DWG NO.
OFFICE	TRIAL PART NO.
VENDOR	VENDOR NO.

MATL. SPEC.	SEE TABLE	TREAT. & FIN.
NAME A-TYPE TERMINAL (F)		

GENERAL TOLERANCE										PART NO.				
10MAX	50MAX	100MAX	250MAX	2500VR	ANGLE	ECCENT	DWG TYPE	DWG SOURCE	DWG DATE	UNIT	SCL	ANGLE	△ 7116-1670-02 ETC. (7B16-1670-02)	
A ±0.15	±0.2	±0.3	±0.5	±0.75	±30'	0.1	R	NEW	90.07.24	mm	10/1	3	DWG NO.	7116-1670-02:R
B ±0.2	±0.3	±0.55	±0.95	±1.4	±30'	0.1	APPROVED	CHECKED	CHECKED	DESIGN	DRAWN		SET DWG NO.	
© ±0.3	±0.5	±0.8	±1.4	±2	±30'	0.15			H. SAITOH	H. TAKAHASHI			YAZAKI CORPORATION	
SPECIFIED						MASS			90.07.24	02.12.16				