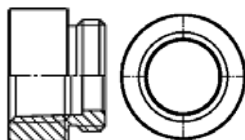


# Cable Entry Accessories

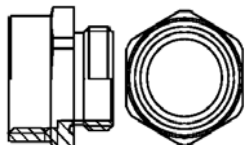
## Adapters from M to NPT

| Male Thread | Female Thread | Part Number    |
|-------------|---------------|----------------|
| M20         | 1/2"          | 73 00 000 5322 |
| M25         | 1/2"          | 73 00 000 5323 |
| M25         | 3/4"          | 73 00 000 5319 |
| M32         | 3/4"          | 73 00 000 5324 |
| M32         | 1"            | 73 00 000 5320 |
| M32         | 1 1/4"        | 73 00 000 5321 |
| M40         | 1 1/4"        | 73 00 000 5325 |



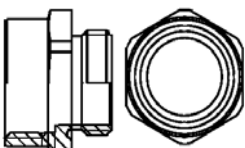
## Adapters from M to PG

| Male Thread | Female Thread | Part Number    |
|-------------|---------------|----------------|
| M20         | PG11          | 73 00 000 5326 |
| M25         | PG16          | 73 00 000 5327 |
| M25         | PG21          | 73 00 000 5328 |
| M32         | PG29          | 73 00 000 5329 |
| M40         | PG29          | 73 00 000 5330 |
| M50         | PG36          | 73 00 000 5331 |
| M50         | PG42          | 73 00 000 5332 |



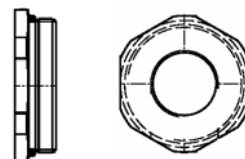
## Adapters from PG to M

| Male Thread | Female Thread | Part Number    |
|-------------|---------------|----------------|
| PG13.5      | M20           | 73 00 000 5333 |
| PG16        | M20           | 73 00 000 5334 |
| PG16        | M25           | 73 00 000 5335 |
| PG21        | M25           | 73 00 000 5336 |
| PG21        | M32           | 73 00 000 5337 |
| PG29        | M40           | 73 00 000 5338 |
| PG36        | M50           | 73 00 000 5339 |



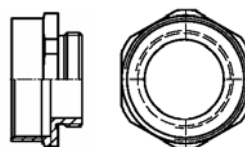
## Adapters from PG to NPT

| Male Thread | Female Thread | Part Number    |
|-------------|---------------|----------------|
| PG11        | 3/8"          | 73 00 000 5308 |
| PG11        | 1/2"          | 73 00 000 5310 |
| PG13.5      | 1/2"          | 73 00 000 5311 |
| PG16        | 1/2"          | 73 00 000 5312 |
| PG21        | 1/2"          | 73 00 000 5313 |
| PG21        | 3/4"          | 73 00 000 5314 |
| PG29        | 1"            | 73 00 000 5315 |
| PG29        | 1 1/4"        | 73 00 000 5316 |
| PG36        | 1 1/4"        | 73 00 000 5317 |
| PG42        | 1 1/2"        | 09 00 000 5046 |



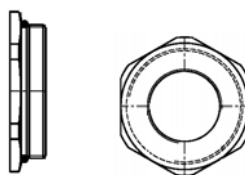
## Increasesers - Metric

| Male Thread | Female Thread | Part Number    |
|-------------|---------------|----------------|
| M20         | M25           | 73 00 000 5340 |
| M25         | M32           | 73 00 000 5341 |
| M32         | M40           | 73 00 000 5342 |
| M40         | M50           | 73 00 000 5344 |
| M50         | M63           | 73 00 000 5345 |



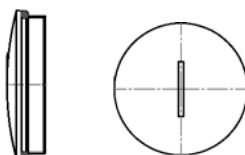
## Reducers - Metric

| Male Thread | Female Thread | Part Number    |
|-------------|---------------|----------------|
| M25         | M20           | 73 00 000 5346 |
| M32         | M25           | 73 00 000 5347 |
| M40         | M32           | 73 00 000 5348 |
| M50         | M40           | 73 00 000 5349 |



## Metric Threaded Plugs

| Male thread | Part Number    |
|-------------|----------------|
| M20         | 73 00 000 5350 |
| M25         | 73 00 000 5351 |
| M32         | 73 00 000 5352 |
| M40         | 73 00 000 5353 |
| M50         | 73 00 000 5354 |
| M63         | 73 00 000 5355 |



## NPT Hood and Housings

HARTING offers hoods and housings with the NPT adapters pre-installed. To change a PG Hood or Housing to an NPT thread, change the 5<sup>th</sup> digit to a "5". For example, 09 30 016 0520 (PG21) becomes 09 30 516 0520 (3/4" NPT). See the accompanying chart for conversion details.

|         |            |            |
|---------|------------|------------|
| PG 11   | convert to | 3/8" NPT   |
| PG 13.5 | convert to | 1/2" NPT   |
| PG 16   | convert to | 1/2" NPT   |
| PG 21   | convert to | 3/4" NPT   |
| PG 29   | convert to | 1" NPT     |
| PG 36   | convert to | 1 1/4" NPT |

# Mouser Electronics

Authorized Distributor

Click to View Pricing, Inventory, Delivery & Lifecycle Information:

## HARTING:

[09370160301](#) [09370030305](#) [09370061291](#) [09370061540](#) [09370101271](#) [09370035406](#) [09370030301](#)  
[09370061750](#) [09370245402](#) [09370061441](#) [09370060318](#) [09370160521](#) [19000005072](#) [09370035405](#) [09370031440](#)  
[09370031640](#) [09370065405](#) [19000005073](#) [09370240521](#) [09370160271](#) [09370240271](#) [19000005071](#)  
[19000005197](#) [09370161520](#) [09370060542](#) [09370245405](#) [09370101731](#) [09370165405](#) [09370240381](#) [09370480301](#)  
[09370240421](#) [09370161230](#) [09370105403](#) [09370160421](#) [09370035402](#) [09370035401](#) [09370240301](#)  
[09370105405](#) [09370031750](#) [09370101521](#) [09370060301](#) [09370061440](#) [09370100301](#) [09370101421](#) [09370165402](#)  
[09370065407](#) [09370241520](#) [09370030801](#) [09370031250](#) [73000005326](#) [73000005325](#) [73000005351](#)  
[73000005353](#) [73000005310](#) [73000005324](#) [73000005350](#)