

R135-Series

Rotary Switches

PRODUCT WEBPAGE

request sample, configure part



The R135 and R135A-Series rotary switches are single pole, single throw "L" rated up to 3A, feature an ON-OFF repeating action, and are available with a nylon actuating knob; nylon snap-in bracket or nickel-plated brass bushing. These switches are typically used to control lighting functions.

1	1.5-5	125, 250	12
Pole	Amps	VAC	VDC

Typical Applications

- Appliances
- HVAC

Tech Specs

Dielectric Strength

UL/CSA: 1000V - live to dead metal parts

Electrical Life

100,000 cycles

Operating Temperature

32°F to 185°F (0°C to 85°C)

Ordering Scheme

Sample Part Number **R135-A** **BL**

Selection 1 2

1. SERIES

1.5A 250 VAC; 3A 125 VAC L; 5A 12 VDC Wire Leads
 OFF-ON repeating .375 threaded bushing **R135**
 OFF-ON repeating nylon snap-in bezel **R135-A**

2. KNOB COLOR

BL Black
WH White
 Custom colors available. Consult factory.

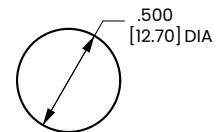
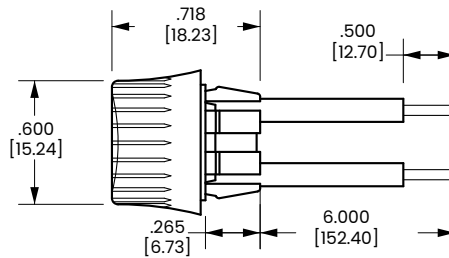
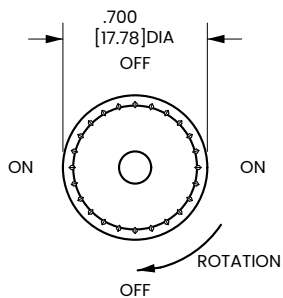
Note:
 Standard Wire Leads are 6" long, stripped 1/2" black. If different length required, please specify at the end of the part number. ex. R135-A-BL/20". Panel Cut-Out Recommendations: For sheet metal panels, switch must enter panel in same direction as the punch. Burr on bottom. Test cut hole in actual material.

[Configure Complete Part Number >](#)

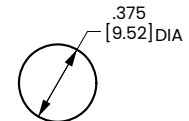
[Browse Standard Parts >](#)

Dimensional Specs

inches [millimeters]



NYLON BEZEL MOUNTING HOLE
 Snaps into .500 [12.70] Dia. hole
 Panel Thickness: .020 [508] to .078 [1.98]



THREADED BUSHING MOUNTING HOLE
 Fits into .375 [9.52] Dia. hole
 Bushing Length: .312 [7.92]

Authorized Sales Representatives and Distributors

Click on a region of the map below to find your local representatives and distributors or visit www.carlingtech.com/findarep.



About Carling

Founded in 1920, Carling Technologies is a leading manufacturer of electrical and electronic switches and assemblies, circuit breakers, electronic controls, power distribution units, and multiplexed power distribution systems. With six ISO9001 and IATF16949 registered manufacturing facilities and technical sales offices worldwide, Carling Technologies Sales, Service and Engineering teams do much more than manufacture electrical components, they engineer powerful solutions! To learn more about Carling please visit www.carlingtech.com/company-profile.

To view all of Carling's environmental, quality, health & safety certifications please visit www.carlingtech.com/environmental-certifications.

© Carling Technologies, Inc.

3. Carling is a registered trademark of Carling Technologies, Inc. in the U.S. and other countries.