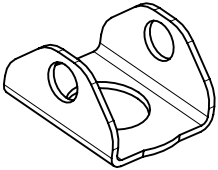
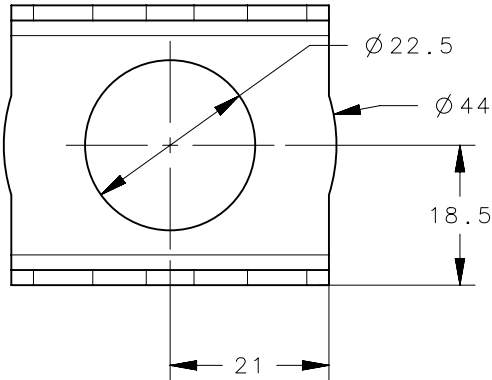


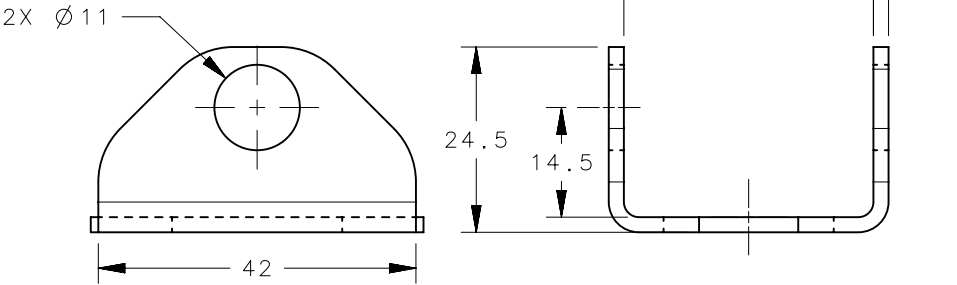
NOTES:

- A.PADLOCK BRACKET IS TO BE USED WITH E3 SINGLE HOLE MOUNT, LARGE SIZE AND MINIMAL PROTRUSION VISE ACTION COMPRESSION LATCHES (EXCEPT KNOB AND T-HANDLE) OR E5 QUAD PANEL LATCH .
- B.WHEN CALCULATING TOOL GRIP, ADD PADLOCK THICKNESS TO (DOOR) THICKNESS.
- C.TO PROVIDE SEALING, USE TWO FLANGE GASKETS, ONE ON EACH SIDE OF PADLOCK BRACKET. ADD COMPRESSED THICKNESS OF EACH FLANGE GASKET TO THE PANEL (DOOR) THICKNESS.
- D.SOUTHCO'S LONGER SHANK KEYS ARE REQUIRED WHEN USED WITH THE PADLOCK BRACKET.
- E.MINIMUM PADLOCK SHACKLE CLEARANCE IS 38mm.
- F.PADLOCK BRACKET DOES NOT RECCOMENDED TO BE USED WITH PULL TAB OR SEALING COVER.
- G.LUCENT MEDIUM GREY POWDER COAT.
- H.ALCATEL-LUCENT OUTDOOR LIGHT GREY POWDER COAT.
- I.PADLOCK BRACKET: FOR 19.1mm SIZE SINGLE HOLE MOUNT TOOL OPERATED ONLY. NOT FOR USE WITH SOUTHCO TUBULAR KEY.

REVISION HISTORY			
REV	DATE	BY	DESCRIPTION
1	14JUN2024	BVM/CRM	PRN: P2024-1031



SCALE 1:2



E3-77-101-10	BRACKET	304 STAINLESS STEEL	SEE NOTE H
E3-77-101-09	BRACKET	304 STAINLESS STEEL	SEE NOTE G
E3-77-101-07	BRACKET	304 STAINLESS STEEL	BLACK POWDER COATED
E3-77-101-31	BRACKET	304 STAINLESS STEEL	BLACK POWDER COATED
E3-77-101-24	BRACKET	304 STAINLESS STEEL	PASSIVATED
PART NUMBER	TYPE OF COMPONENT	MATERIAL	FINISH
CPB NUMBER	<div>THIRD ANGLE PROJECTION</div> <div>MILLIMETERS [IN]</div> <div>TOLERANCES UNLESS OTHERWISE NOTED</div> <div>ALL DIMENSIONS WITHOUT TOLERANCES ARE FOR REFERENCE ONLY.</div> <div>PER ASME Y14.5M-2009</div>	<div><div>southco®</div><div>CONNECT • CREATE • INNOVATE</div></div> <div>DESCRIPTION</div> <div>E3 PADLOCK BRACKET, SQUARE</div> <div><div>SIZEA4</div><div>SYSTEMNX</div><div>DWG NO.J-E3-77-101</div></div> <div><div>DRAWN BYMDM/KAE</div><div>DATE29MAY1998</div><div>SCALE1:1</div><div>SHEET1 OF 1</div></div>	
SURFACE AREA			
VOLUME			
<div>PROPRIETARY ITEM</div> <div>EXCEPT FOR USES EXPRESSLY GRANTED IN WRITING, INFORMATION DISCLOSED HEREON IS CONFIDENTIAL AND ALL RIGHTS, PATENT AND OTHERWISE, ARE RESERVED BY SOUTHCO, INC.</div>			