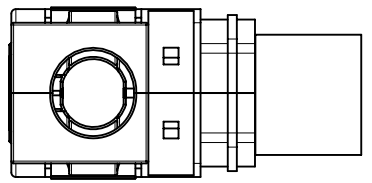
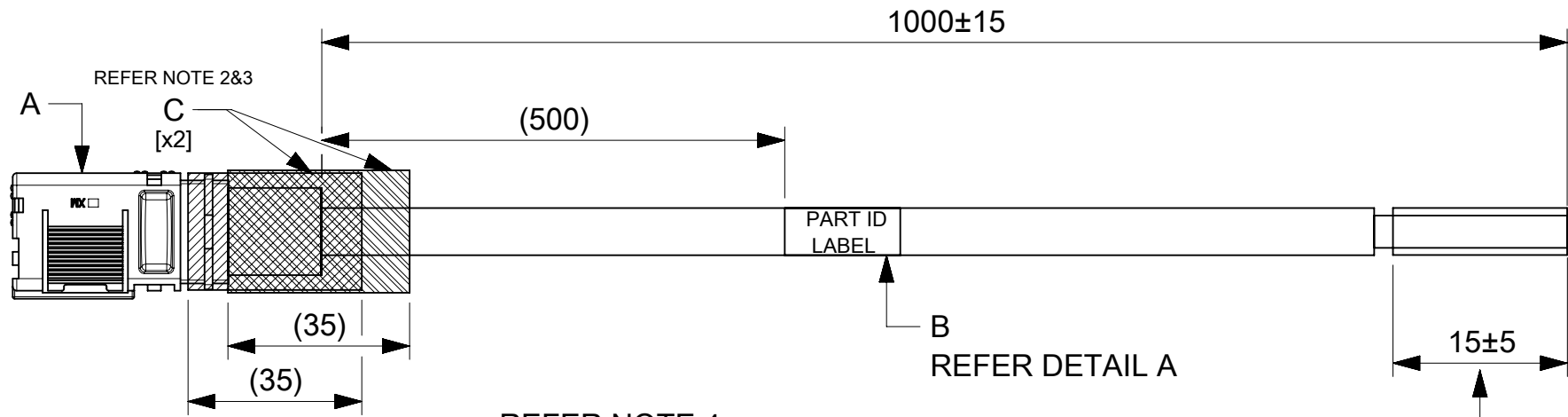


ITEM #	MOLEX PART#	DESCRIPTION	QTY	UOM
A	2178841001	6mm SIDEWIZE ASSY 2 AWG RECEPTACLE RED	1	PC
B	-	PART ID LABEL	1	PC
C	-	HST	A/R	M

FROM	TO	CABLE PART#	DESCRIPTION	COLOR
A	-	-	1X2AWG PVC UL1015 RED	RED



2243572216  
MOLEX  
BATCH WK/YR

- NOTE:
1. CABLE ASSEMBLY TO BE ENSURED FOR CONTINUITY.
  2. INSTALL HST ON THE BARREL AS SHOWN IN DRAWING.
  3. ENSURE LATCH AND THE CRIMPING PROFILE ARE IN THE SAME PLANE.
  4. HST (2 QTY) TO BE COVERED FROM THE WIRE INSULATION TO OVER THE RIB, TO ENSURE THERE IS NO EXPOSURE OF BARE MATERIAL.
  5. FREE ENDS ARE TO BE STRIPPED AND RETAINED. RETAINED PARTS MAY FALL OFF DURING HANDLING AND SHIPPING.

FUNCTIONAL SYMBOLS										THIS DRAWING CONTAINS INFORMATION THAT IS PROPRIETARY TO MOLEX ELECTRONIC TECHNOLOGIES, LLC AND SHOULD NOT BE USED WITHOUT WRITTEN PERMISSION																					
DIMENSION UNITS		SCALE		CURRENT REV DESC:																											
mm		NTS		EC NO: 769243 DRWN: ROHITJ3 2023/11/09 CHK'D: SKUMAR07 2023/11/30 APPR: SKUMAR07 2023/11/30 INITIAL REVISION: DRWN: MARUTG 2023/04/25 APPR: SKUMAR07 2023/04/27																											
GENERAL TOLERANCES (UNLESS SPECIFIED)																															
ANGULAR TOL ± °																															
4 PLACES ±																															
3 PLACES ±																															
2 PLACES ±				DOCUMENT NUMBER				DOC TYPE				DOC PART				REVISION															
1 PLACE ±				2243572216				PSD				000				E															
0 PLACES ±				DRAFT WHERE APPLICABLE MUST REMAIN WITHIN DIMENSIONS				THIRD ANGLE PROJECTION				DRAWING				SERIES				MATERIAL NUMBER				CUSTOMER				SHEET NUMBER			
				A4-SIZE				224357				2243572216				GENERAL MARKET				1 OF 1											

DOCUMENT STATUS	P1	RELEASE DATE	2023/11/30	03:53:47
-----------------	----	--------------	------------	----------