



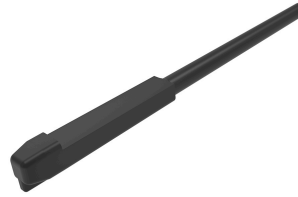
Part Number : [343450001](#)

Product Description : MX150 Sealed Cavity Plug

Series Number : 34345

Status : Active

Product Category : Connector Accessories



Documents & Resources

Drawings

[Drawing 343450001_sd.pdf](#)


[Packaging Design Drawing PK-31300-438-001.pdf](#)

3D Models and Design Files

[3D Model 343450001_stp.zip](#)

Product Environment Compliance

Compliance

GADSL/IMDS	Compliant
China RoHS	
EU ELV	Compliant per 2000/53/EC
Low-Halogen Status	Low-Halogen per IEC 61249-2-21
REACH SVHC	Not Contained per D(2024)4144-DC (27 June 2024)
EU RoHS	Compliant per EU 2015/863

Multiple Part Product Compliance Statements

- Eu RoHS
- REACH SVHC
- Low-Halogen

Multiple Part Industry Compliance Documents

- IPC 1752A Class C
- IPC 1752A Class D
- Molex Product Compliance Declaration
- IEC-62474
- chemSHERPA (xml)

Part Details

General

Status	Active
Category	Connector Accessories
Series	34345
Description	MX150 Sealed Cavity Plug
Application	Automotive
Comments	Meets USCAR 2, Rev. 3 Specification
Component Type	Cavity Plug
Product Family	MX150 Sealed and Unsealed Connector System
Product Name	MX150
UPC	822348340170

Physical

Breakaway	No
Circuits (Loaded)	0
Circuits (maximum)	0
Color - Resin	Natural
Gender	Plug
Material - Resin	PBT
Net Weight	0.160/g
Packaging Type	Bag
Temperature Range - Operating	-40° to +125°C

Solder Process Data

Lead-Free Process Capability	N/A
------------------------------	-----

Use with Part(s)

Description	Part Number
MX150 Mat-Sealed Single Row Male Connector Assemblies	<u>33481</u>

