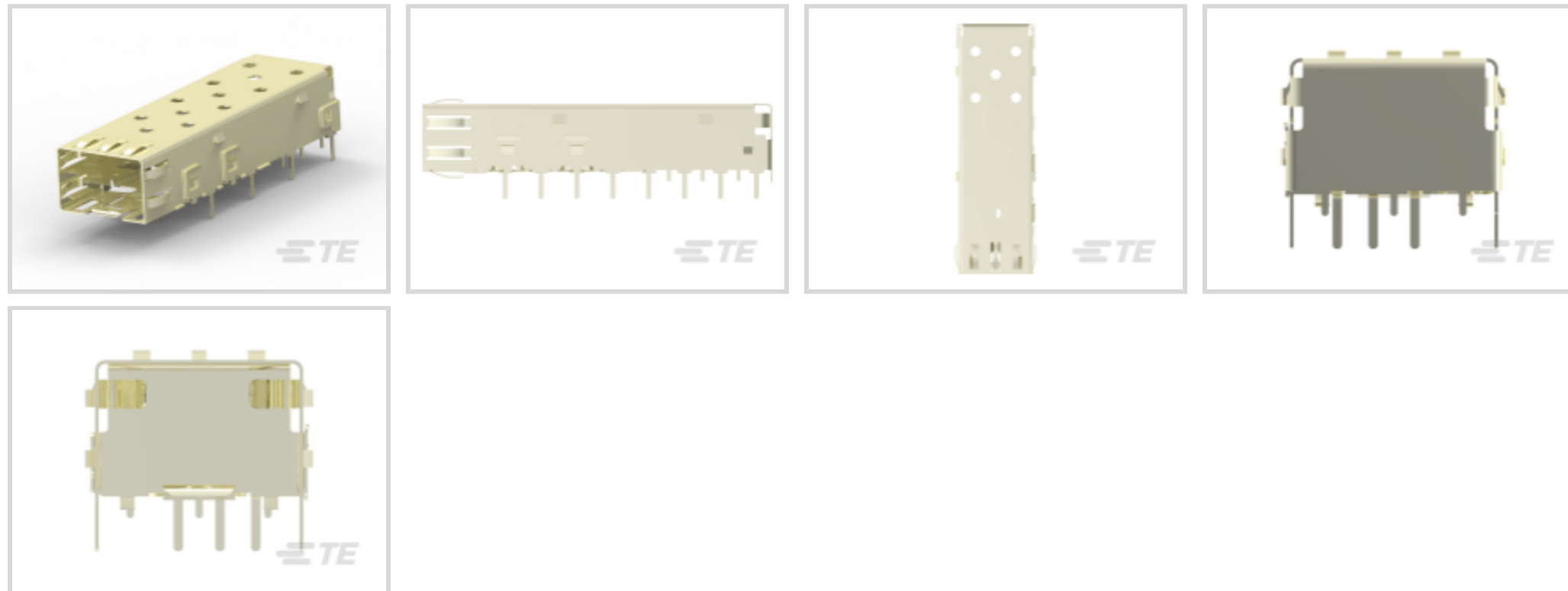




Connectors > Pluggable IO Connectors & Cages



Pluggable I/O Product Type: **Cage**

Sealable: **No**

Operating Temperature Range: **-55 – 85 °C [-67 – 185 °F]**

Data Rate (Max): **4 Gb/s**

Number of Ports: **1**

Features

Product Type Features

Cage Type	Single
Pluggable I/O Product Type	Cage
Sealable	No
Form Factor	SFP

Configuration Features

Number of Ports	1
Port Matrix Configuration	1 x 1

Electrical Characteristics

Data Rate (Max)	4 Gb/s
-----------------	--------

Contact Features

Tail Plating Material	Tin
-----------------------	-----

Termination Features

Termination Post & Tail Length	3.56 mm [.14 in]
Termination Method to PCB	Through Hole - Solder

Housing Features



Cage Material	Stainless Steel
---------------	-----------------

Dimensions

PCB Thickness (Recommended)	1.5 mm[.059 in]
-----------------------------	-----------------

Usage Conditions

Operating Temperature Range	-55 – 85 °C[-67 – 185 °F]
-----------------------------	---------------------------

Operation/Application

Pluggable I/O Applications	zSFP+ Thermally Enhanced
----------------------------	--------------------------

Heat Sink Compatible	No
----------------------	----

Packaging Features

Packaging Method	Tray
------------------	------

Other

Included Lightpipe	No
--------------------	----

EMI Containment Feature Type	Internal/External EMI Springs
------------------------------	-------------------------------

Product Compliance

[For compliance documentation, visit the product page on TE.com>](#)

EU RoHS Directive 2011/65/EU	Compliant
------------------------------	-----------

EU ELV Directive 2000/53/EC	Compliant
-----------------------------	-----------

China RoHS 2 Directive MIIT Order No 32, 2016	No Restricted Materials Above Threshold
---	---

EU REACH Regulation (EC) No. 1907/2006	Current ECHA Candidate List: JUNE 2024 (241) Candidate List Declared Against: JUNE 2024 (241) Does not contain REACH SVHC
--	---

Halogen Content	Low Halogen - Br, Cl, F, I < 900 ppm per homogenous material. Also BFR/CFR/PVC Free
-----------------	---

Solder Process Capability	Wave solder capable to 260°C
---------------------------	------------------------------

Product Compliance Disclaimer

This information is provided based on reasonable inquiry of our suppliers and represents our current actual knowledge based on the information they provided. This information is subject to change. The part numbers that TE has identified as EU RoHS compliant have a maximum concentration of 0.1% by weight in homogenous materials for lead, hexavalent chromium, mercury, PBB, PBDE, DBP, BBP, DEHP, DIBP, and 0.01% for cadmium, or qualify for an exemption to these limits as defined in the Annexes of Directive 2011/65/EU (RoHS2). Finished electrical and electronic equipment products will be CE marked as required by Directive 2011/65/EU. Components may not be CE marked. Additionally, the part numbers that TE has identified as EU ELV compliant have a maximum concentration of 0.1% by weight in homogenous materials for lead, hexavalent chromium, and mercury, and 0.01% for cadmium, or qualify for an exemption to these limits as defined in the Annexes of Directive 2000/53/EC (ELV). Regarding the REACH Regulation, the information TE provides

on SVHC in articles for this part number is based on the latest European Chemicals Agency (ECHA) 'Guidance on requirements for substances in articles' posted at this URL: <https://echa.europa.eu/guidance-documents/guidance-on-reach>

Compatible Parts



TE Part # CAT-SF59-C76264
SFP Connectors



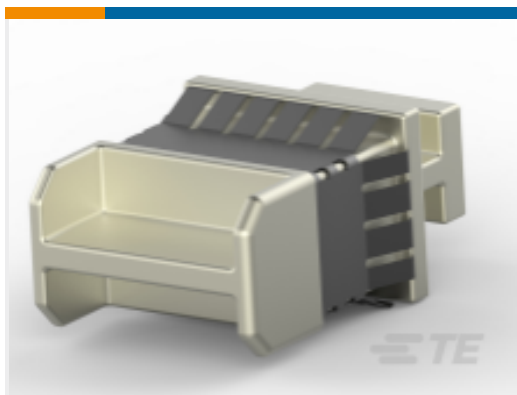
TE Part # 1367147-1
SFP COVER, UNPLATED



TE Part # 1367147-3
SFP COVER, UNPL, NO LOGO



TE Part # 1761394-1
DUST COVER, SFP, GANGED & STACKED



TE Part # 1888901-1
SFP+ EMI Plug

Customers Also Bought



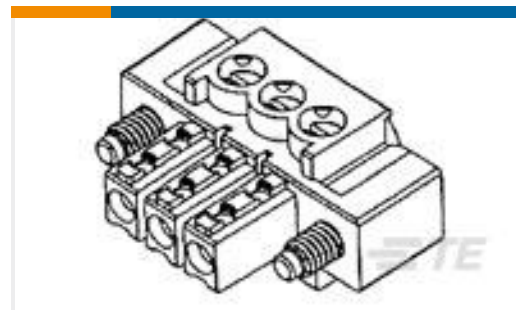
TE Part #2057630-1
CFP Receptacle Conn Assy



TE Part #2057631-1
CFP Receptacle Cover Assy



TE Part #2057629-1
CFP Module Conn Assy



TE Part #284510-8
8P TERMI-BLOK PLUG CON VITI



TE Part #5646956-3
UPM PIN ASSY, SEQUENCED, 6 POS



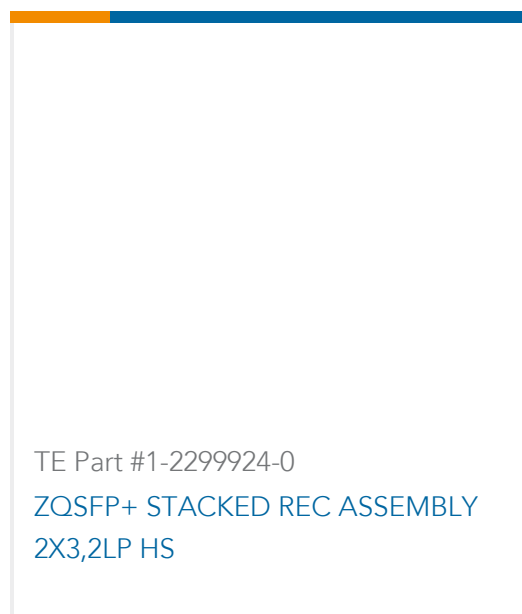
TE Part #1410714-3
MULTIGIG RT DC 7.2 GUIDE SOCKET



TE Part #2329186-1
HM-EZD+,2PAIRS,10COLS,VERTICAL, ASSEMBLY



TE Part #2358715-1
ICCON BLOCK SIZE 10.3mm SOCKET ASSEMBLY



Documents

CAD Files

Customer View Model

[ENG_CVM_CVM_2227303-1_C1.3d_stp.zip](#)

English

Customer View Model

[ENG_CVM_CVM_2227303-1_C1.2d_dxf.zip](#)

English

Customer View Model

[ENG_CVM_CVM_2227303-1_C1.3d_igs.zip](#)

English

3D PDF

3D

By downloading the CAD file I accept and agree to the [Terms and Conditions](#) of use.

Product Specifications

Application Specification

English