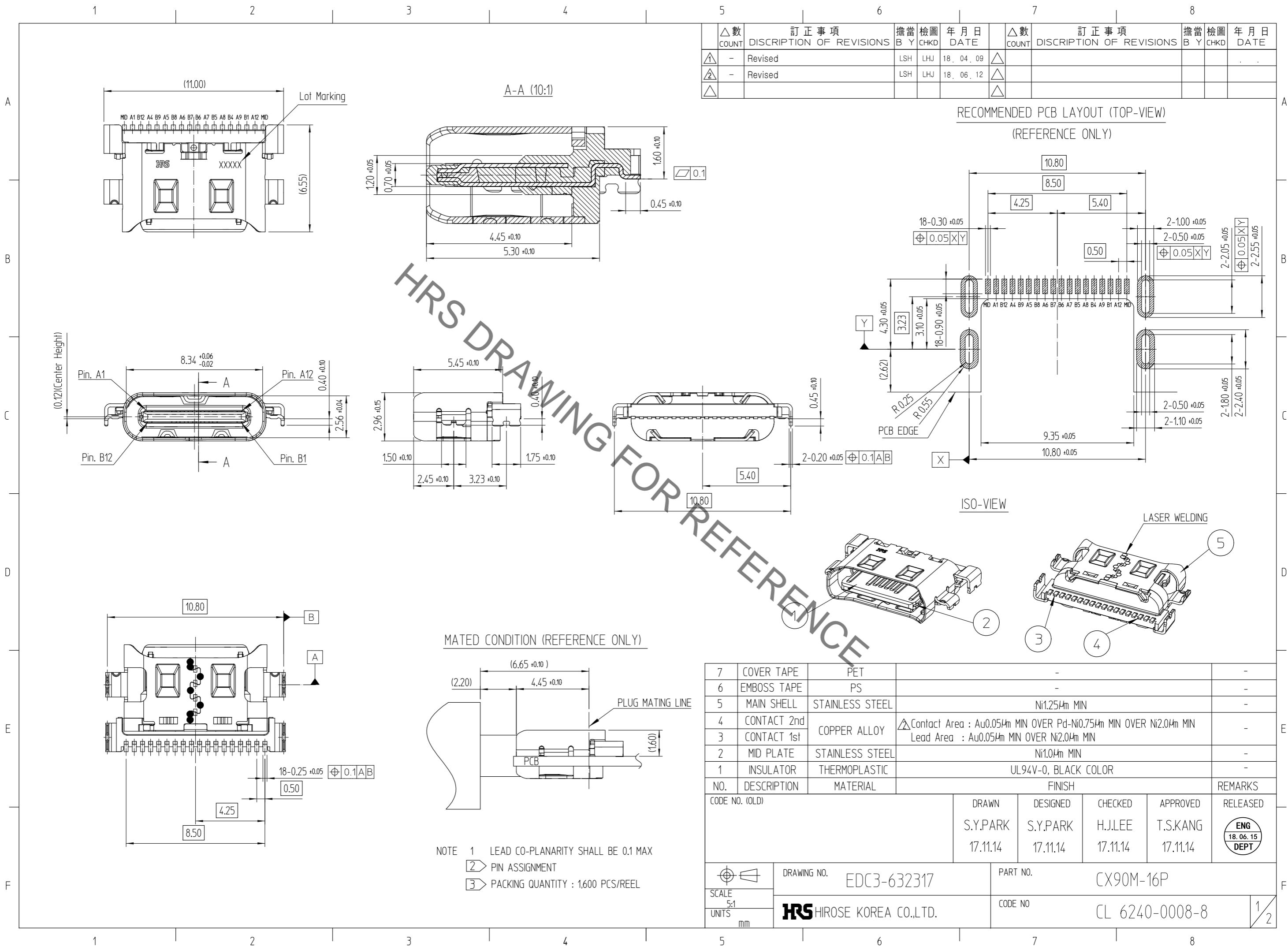


Sep.1.2021 Copyright 2021 HIROSE ELECTRIC CO., LTD. All Rights Reserved.
In case of consideration for using Automotive equipment / device which demand high reliability, kindly contact our sales window correspondents.



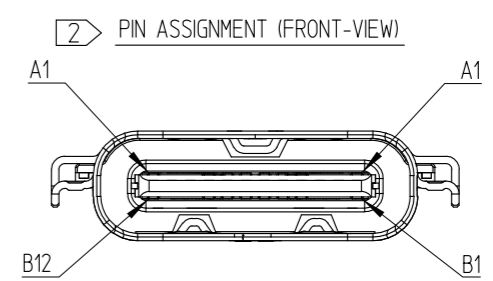
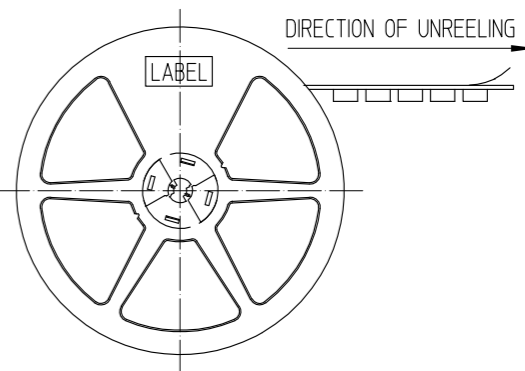
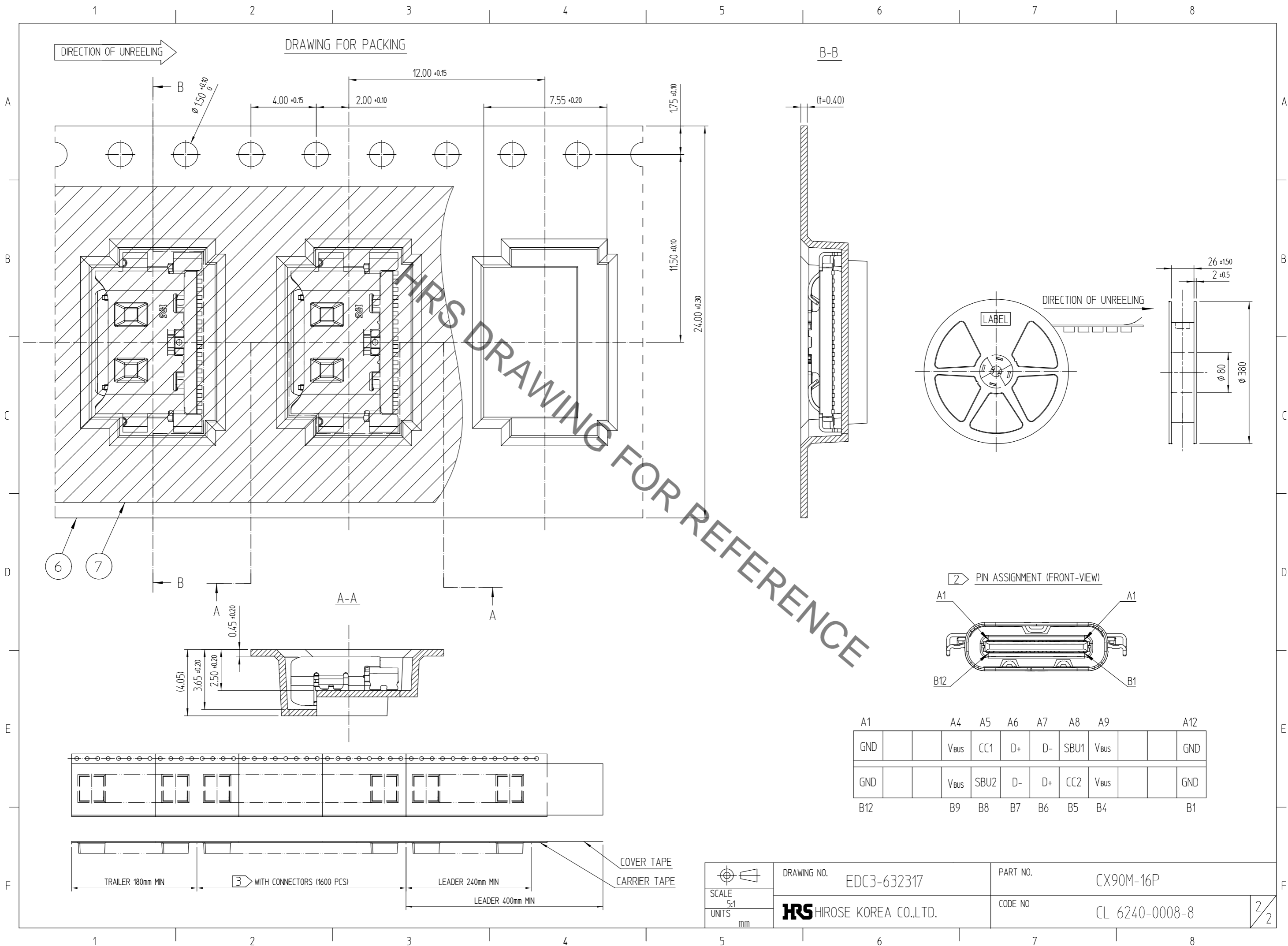
△數 COUNT	訂正事項 DISCRIPTION OF REVISIONS	擔當 B Y	檢圖 CHKD	年月日 DATE	△數 COUNT	訂正事項 DISCRIPTION OF REVISIONS	擔當 B Y	檢圖 CHKD	年月日 DATE
△1	- Revised	LSH	LHJ	18. 04. 09	△1				
△2	- Revised	LSH	LHJ	18. 06. 12	△1				
△3					△1				

NO.	DESCRIPTION	MATERIAL	FINISH	REMARKS
7	COVER TAPE	PET	-	-
6	EMBOSS TAPE	PS	-	-
5	MAIN SHELL	STAINLESS STEEL	Ni1.25μm MIN	-
4	CONTACT 2nd	COPPER ALLOY	△Contact Area : Au0.05μm MIN OVER Pd-Ni0.75μm MIN OVER Ni2.0μm MIN Lead Area : Au0.05μm MIN OVER Ni2.0μm MIN	-
3	CONTACT 1st			-
2	MID PLATE	STAINLESS STEEL	Ni1.0μm MIN	-
1	INSULATOR	THERMOPLASTIC	UL94V-0, BLACK COLOR	-

CODE NO. (OLD)	DRAWN	DESIGNED	CHECKED	APPROVED	RELEASED
	S.Y.PARK	S.Y.PARK	H.J.LEE	T.S.KANG	ENG 18.06.15 DEPT
	17.11.14	17.11.14	17.11.14	17.11.14	

SCALE 5:1 UNITS mm	DRAWING NO. EDC3-632317	PART NO. CX90M-16P
	HIROSE KOREA CO.,LTD.	CODE NO. CL 6240-0008-8

Sep.1.2021 Copyright 2021 HIROSE ELECTRIC CO., LTD. All Rights Reserved.
 In case of consideration for using Automotive equipment / device which demand high reliability, kindly contact our sales window correspondents.



A1		A4	A5	A6	A7	A8	A9		A12
GND		V _{bus}	CC1	D+	D-	SBU1	V _{bus}		GND
GND		V _{bus}	SBU2	D-	D+	CC2	V _{bus}		GND
B12		B9	B8	B7	B6	B5	B4		B1

 SCALE 5:1 UNITS mm	DRAWING NO.	EDC3-632317	PART NO.	CX90M-16P	
	HIROSE KOREA CO.,LTD.		CODE NO.	CL 6240-0008-8	2/2