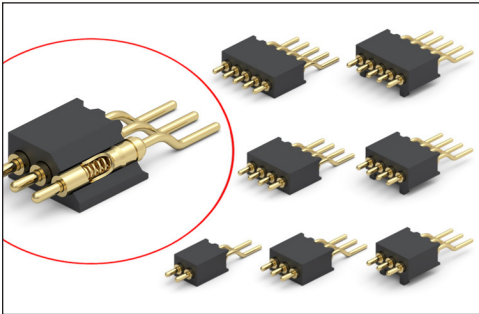


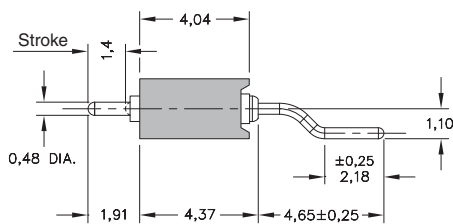
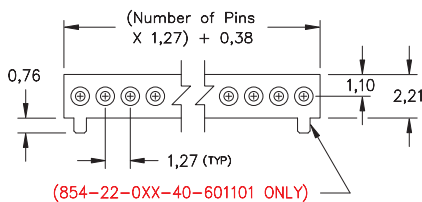
SPRING-LOADED CONNECTORS

SERIES 854 • 1,27 GRID Z-BEND SURFACE MOUNT • SINGLE ROW STRIPS

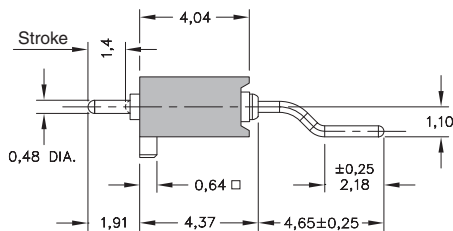


- Modular contacts for use on 1,27 grid, supplied in single row contact strips. Piston action is parallel to the board surface
- Precision-machined piston / base and gold-plated components assure up to 100,000 cycle life durability
- Pistons have a 0,7 mid. stroke & 1,4 max. stroke
- Low resistance, high current contacts are rated at 2 amps continuous, 3 amps peak
- High temperature thermoplastic insulators are suitable for surface mount soldering processes
- 854 series contact strips are designed for SMT termination onto printed circuit boards

SINGLE ROW Series 854



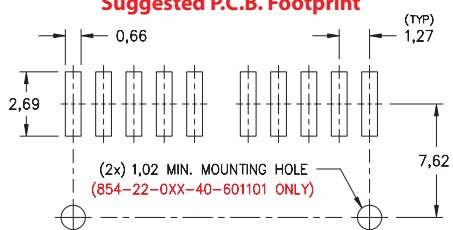
854 Series without Mounting Pegs



854 Series with Mounting Pegs

Coplanarity 0,13. For pin counts >20 positions, consult Technical Support.

Suggested P.C.B. Footprint



ORDERING INFORMATION

Series 854 without Mounting Pegs (Bulk Packaged)

854-22-0XX-40-001101

Specify number of contacts 01-20

Series 854 with Mounting Pegs (Bulk Packaged)

854-22-0XX-40-601101

Specify number of contacts 01-20

Series 854 with Mounting Pegs (Tape & Reel Packaged, 2,400 parts per reel)

854-22-0XX-40-601191

Specify number of contacts 02

Technical Specifications

Materials:

Contact piston & base: Machined copper alloy plated 0,51 μm gold over 2,54 μm nickel
 Spring: Beryllium copper-plated 0,25 μm gold
 Insulator: High temperature thermoplastic, rated UL94 V-0

Mechanical:

Spring force @ initial height: 25 grams
 Spring force @ mid stroke (0,7): 60 grams
 Durability: Up to 100,000 cycles

Electrical:

Voltage rating: 100Vrms/150Vdc
 Current rating: 2A (continuous), 3A (peak) per contact
 Contact resistance: 20mΩ max.
 Insulation resistance: 10,000MΩ min.
 Dielectric strength: 700Vrms min.
 Capacitance: 1pF max.

RoHS-2
2011/65/EU



Mouser Electronics

Authorized Distributor

Click to View Pricing, Inventory, Delivery & Lifecycle Information:

Mill-Max:

[854-22-002-40-001101](#) [854-22-003-40-001101](#) [854-22-004-40-001101](#) [854-22-005-40-001101](#) [854-22-010-40-001101](#) [854-22-020-40-001101](#) [854-22-015-40-601101](#) [854-22-019-40-001101](#) [854-22-018-40-001101](#) [854-22-008-40-601101](#) [854-22-012-40-601101](#) [854-22-011-40-001101](#) [854-22-009-40-601101](#) [854-22-019-40-601101](#) [854-22-017-40-601101](#) [854-22-003-40-601101](#) [854-22-012-40-001101](#) [854-22-007-40-001101](#) [854-22-015-40-001101](#) [854-22-020-40-601101](#) [854-22-008-40-001101](#) [854-22-010-40-601101](#) [854-22-011-40-601101](#) [854-22-013-40-601101](#) [854-22-014-40-601101](#) [854-22-016-40-001101](#) [854-22-009-40-001101](#) [854-22-016-40-601101](#) [854-22-014-40-001101](#) [854-22-005-40-601101](#) [854-22-007-40-601101](#) [854-22-006-40-601101](#) [854-22-017-40-001101](#) [854-22-004-40-601101](#) [854-22-006-40-001101](#) [854-22-018-40-601101](#) [854-22-013-40-001101](#)