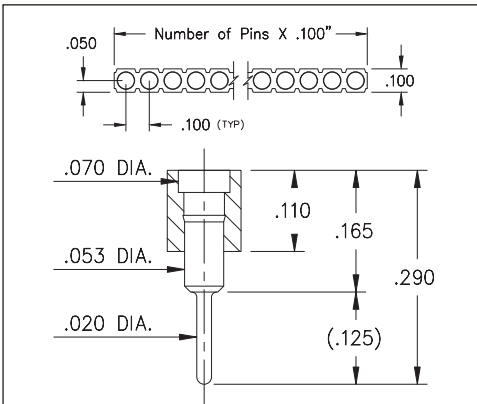
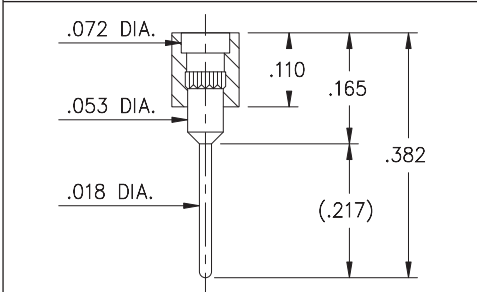


# SPRING-LOADED CONNECTORS

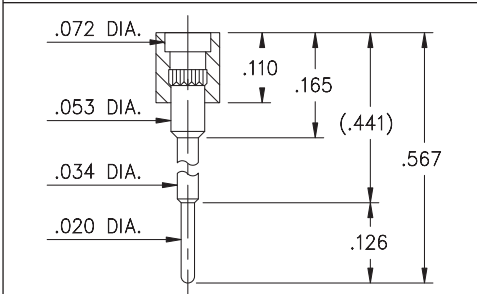
## SERIES 319, 330 • .100" GRID TARGET CONNECTORS FOR SPRING-LOADED ASSEMBLIES • SINGLE ROW STRIPS



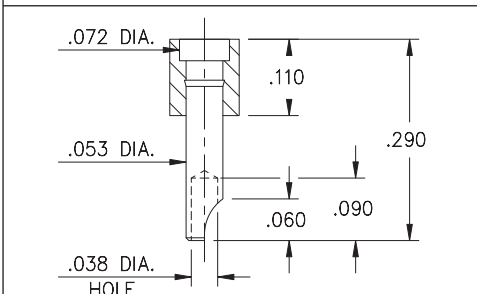
**FIG. 1**



**FIG. 2**

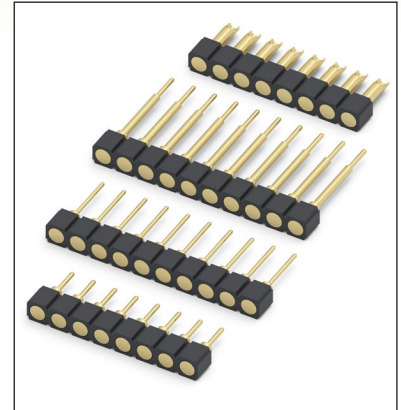


**FIG. 3**



**FIG. 4**

- Series 319 and 330 Spring Target Connectors, supplied in single row strips. Available in through-hole and wire termination configurations
- Target Connectors provide an excellent gold-plated conductive mating surface for spring loaded connectors. These series are offered with a flat face for making contact with our standard .042" dia. spring pin plungers
- Target connectors use MM #1938, #1940, #1942 and #3024 pins. See page 218 for details
- Insulators are high temperature thermoplastic



### ORDERING INFORMATION

	Series 319...001	Standard Solder Tails
<b>FIG. 1</b>	319-10-1	-00-001000 Specify number of pins 01-64
<b>FIG. 2</b>	Series 319...002	Long Solder Tails
	319-10-1	-00-002000 Specify number of pins 01-64
<b>FIG. 3</b>	Series 319...005	Elevated with Solder Tails
	319-10-1	-00-005000 Specify number of pins 01-64
<b>FIG. 4</b>	Series 330...240	Solder Cups
	330-10-1	-00-240000 Specify number of pins 01-64



XX=Plating Code  
See Below

For  
Electrical, Mechanical  
& Environmental Data,  
See page 264

SPECIFY PLATING CODE XX=	10			
Pin Plating	10 μ" Au			



# Mouser Electronics

Authorized Distributor

Click to View Pricing, Inventory, Delivery & Lifecycle Information:

## Mill-Max:

[319-10-164-00-001000](#) [319-10-164-00-002000](#) [319-10-164-00-005000](#) [330-10-164-00-240000](#) [399-10-164-10-008000](#) [319-10-102-00-001000](#) [330-10-102-00-240000](#) [3119-1-00-00-00-00-08-0](#) [3119-2-00-00-00-00-08-0](#) [399-10-105-10-008000](#) [399-10-101-10-008000](#) [399-10-107-10-008000](#) [399-10-103-10-008000](#) [399-10-114-10-008000](#) [399-10-102-10-008000](#) [399-10-108-10-008000](#) [399-10-109-10-008000](#) [399-10-104-10-008000](#) [399-10-115-10-008000](#) [399-10-106-10-008000](#) [399-10-110-10-008000](#)