

B2 BASICS WITH INTEGRAL LEVERS

B2-5
BASIC SWITCHES

SINGLE BREAK, SNAP-ACTION, COMMERCIAL & MILITARY GRADES, SUBMINIATURE, TWO WIDTHS, INTEGRAL LEVERS



WIRE LENGTH FOR A, B, C, D & E

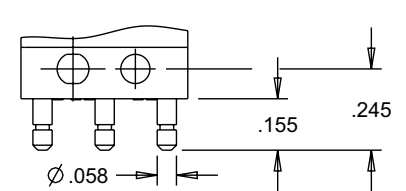
WIRE LENGTH CODE	DIM. "X"	DIM. "Y"
A	06.00±.38	06.09±.38
B	12.00±.50	12.09±.50
C	18.00±.50	18.09±.50
D	24.00±.50	24.09±.50
E	30.00±.75	30.09±.75



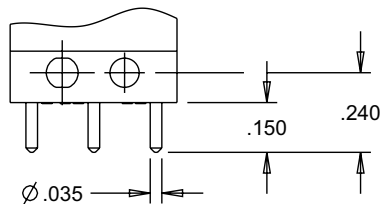
TERMINAL STYLE 1
SINGLE SOLDER TURRET



TERMINAL STYLE 2
DOUBLE SOLDER TURRET



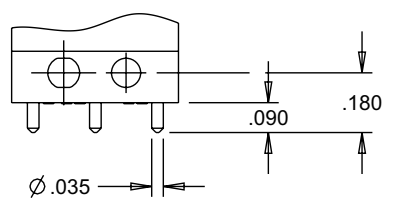
TERMINAL STYLE 3
QUICK CONNECT
MATES WITH AMP .058 INCH RECEPTACLES



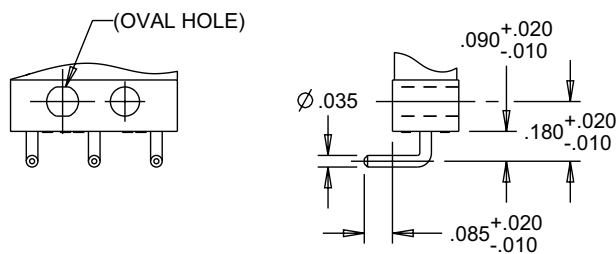
TERMINAL STYLE 4
PRINTED CIRCUIT PIN 0.150" LONG



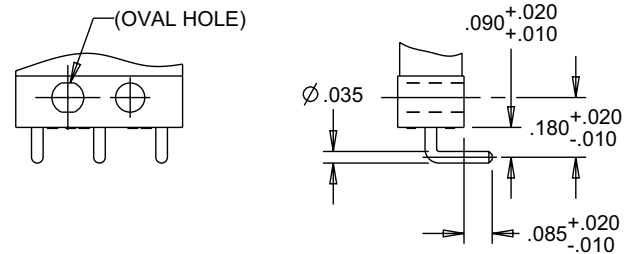
TERMINAL STYLE 5
PRINTED CIRCUIT PIN 0.270" LONG



TERMINAL STYLE 6
PRINTED CIRCUIT PIN 0.090" LONG



TERMINAL STYLE 7
RIGHT ANGLE PRINTED CIRCUIT PIN



TERMINAL STYLE 9
RIGHT ANGLE, OPPOSITE OF 7

SINGLE BREAK, SNAP-ACTION, COMMERCIAL & MILITARY GRADES, SUBMINIATURE, TWO WIDTHS, INTEGRAL LEVERS

B2-5 LEVER STYLES



B2 BASICS WITH INTEGRAL LEVERS

B2-5
BASIC SWITCHES

SINGLE BREAK, SNAP-ACTION, COMMERCIAL & MILITARY GRADES, SUBMINIATURE, TWO WIDTHS, INTEGRAL LEVERS

B2-5 LEVER STYLES



BASIC SWITCHES

Mouser Electronics

Authorized Distributor

Click to View Pricing, Inventory, Delivery & Lifecycle Information:

OTTO:

[B2-500111](#) [B2-500211](#) [B2-500311](#) [B2-500411](#) [B2-5004A1](#) [B2-500511](#) [B2-5005A1](#) [B2-501611](#) [B2-5016A1](#) [B2-501911](#) [B2-5019A1](#) [B2-5001A1](#) [B2-5002A1](#) [B2-5003A1](#) [B2-500113](#) [B2-500141](#) [B2-500143](#) [B2-500171](#) [B2-500191](#) [B2-500213](#) [B2-500241](#) [B2-500261](#) [B2-500273](#) [B2-500341](#) [B2-500363](#) [B2-500413](#) [B2-500443](#) [B2-500471](#) [B2-500473](#) [B2-500491](#) [B2-5004D1](#) [B2-500513](#) [B2-500531](#) [B2-500541](#) [B2-500543](#) [B2-500563](#) [B2-500571](#) [B2-500591](#) [B2-5005B3](#) [B2-5005D1](#) [B2-501213](#) [B2-501273](#) [B2-501293](#) [B2-501621](#) [B2-501671](#) [B2-501691](#) [B2-501693](#) [B2-501933](#) [B2-5019B1](#) [B2-501211](#) [B2-500047](#)