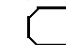
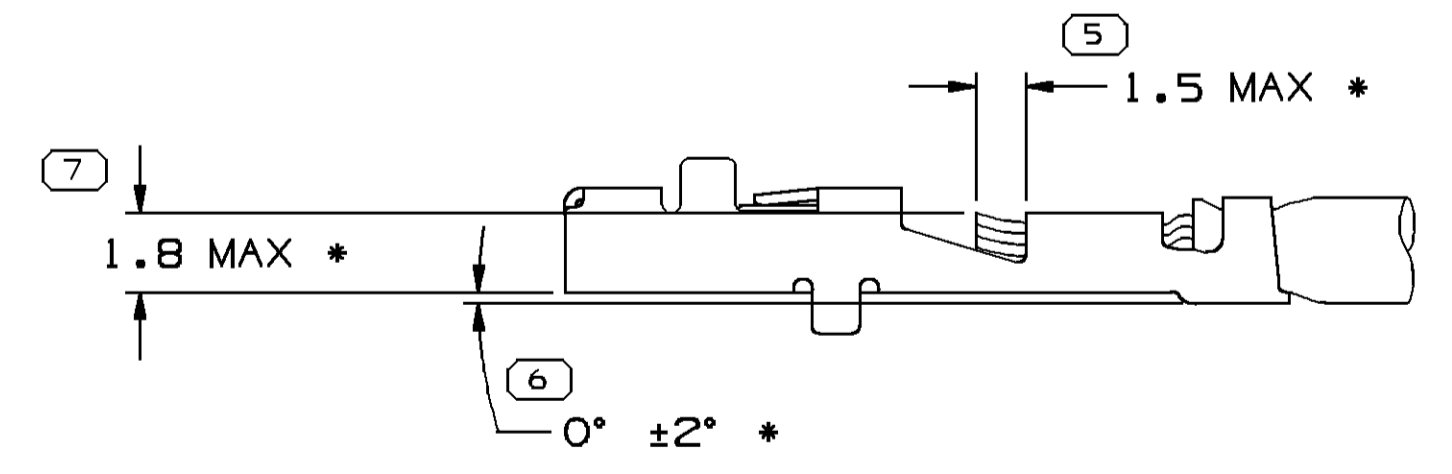
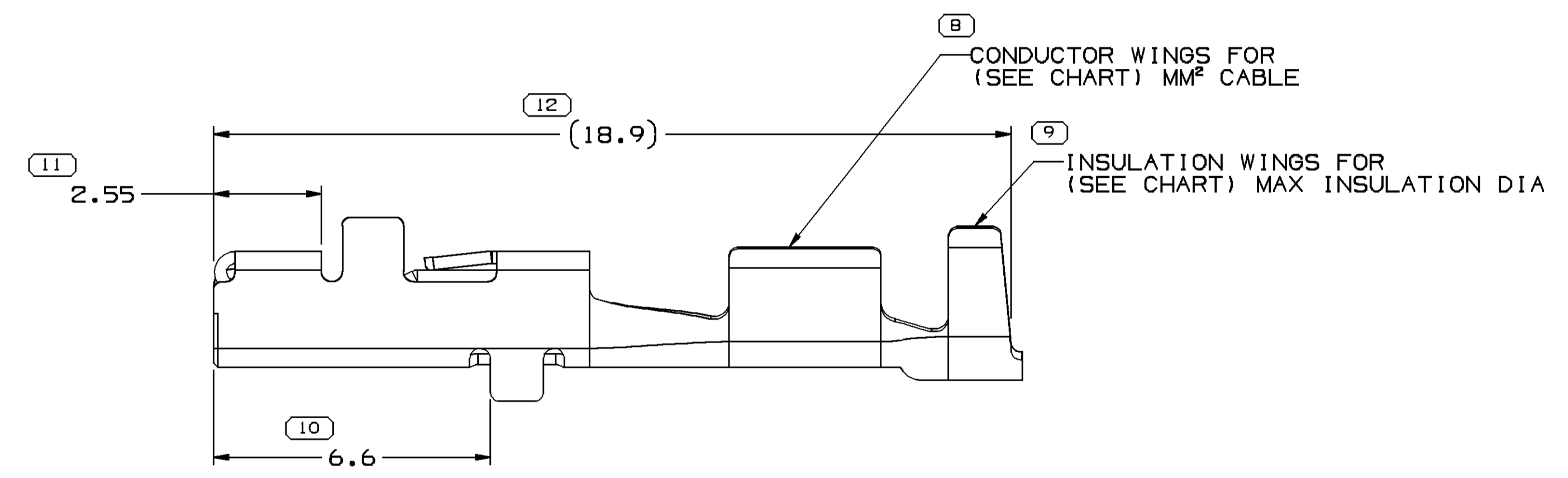
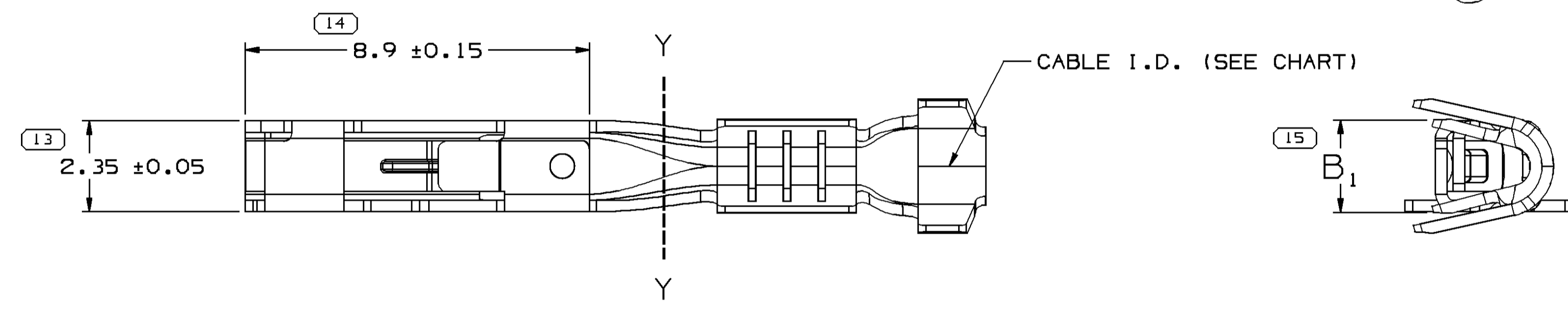
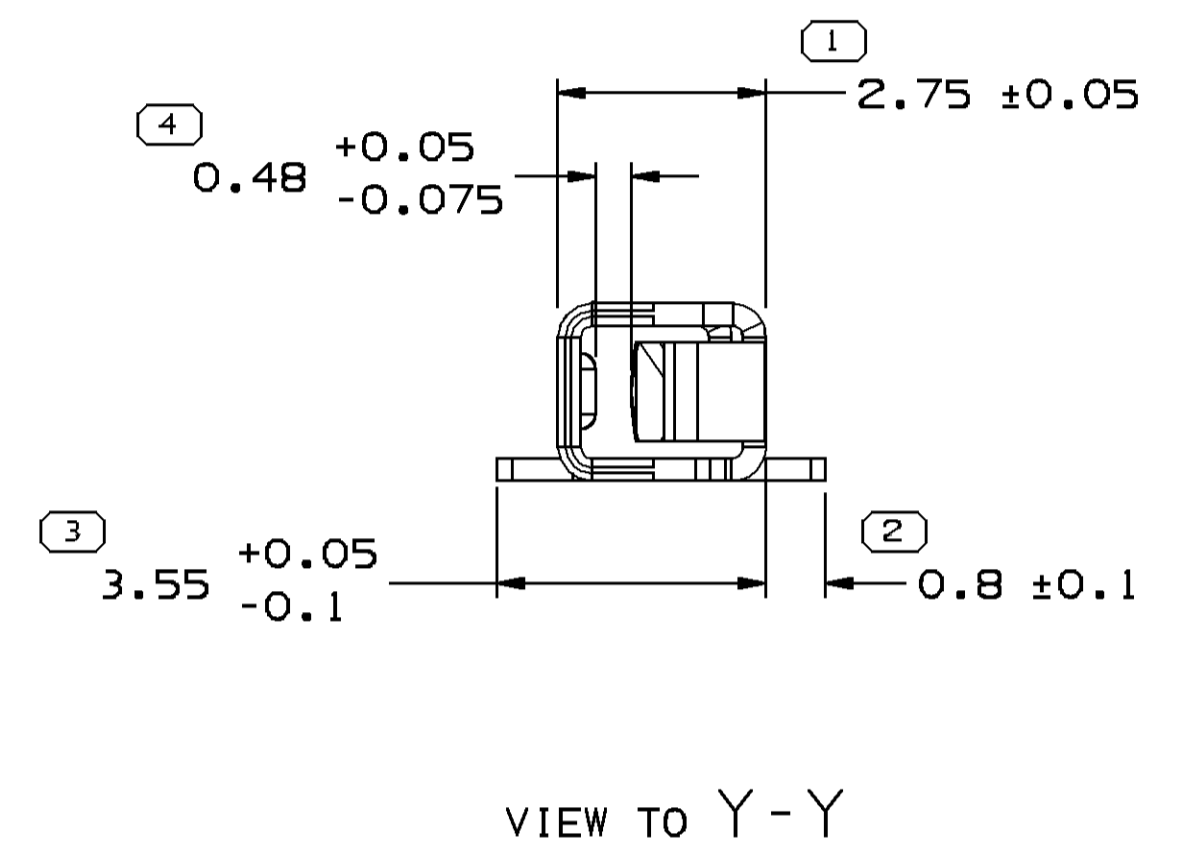
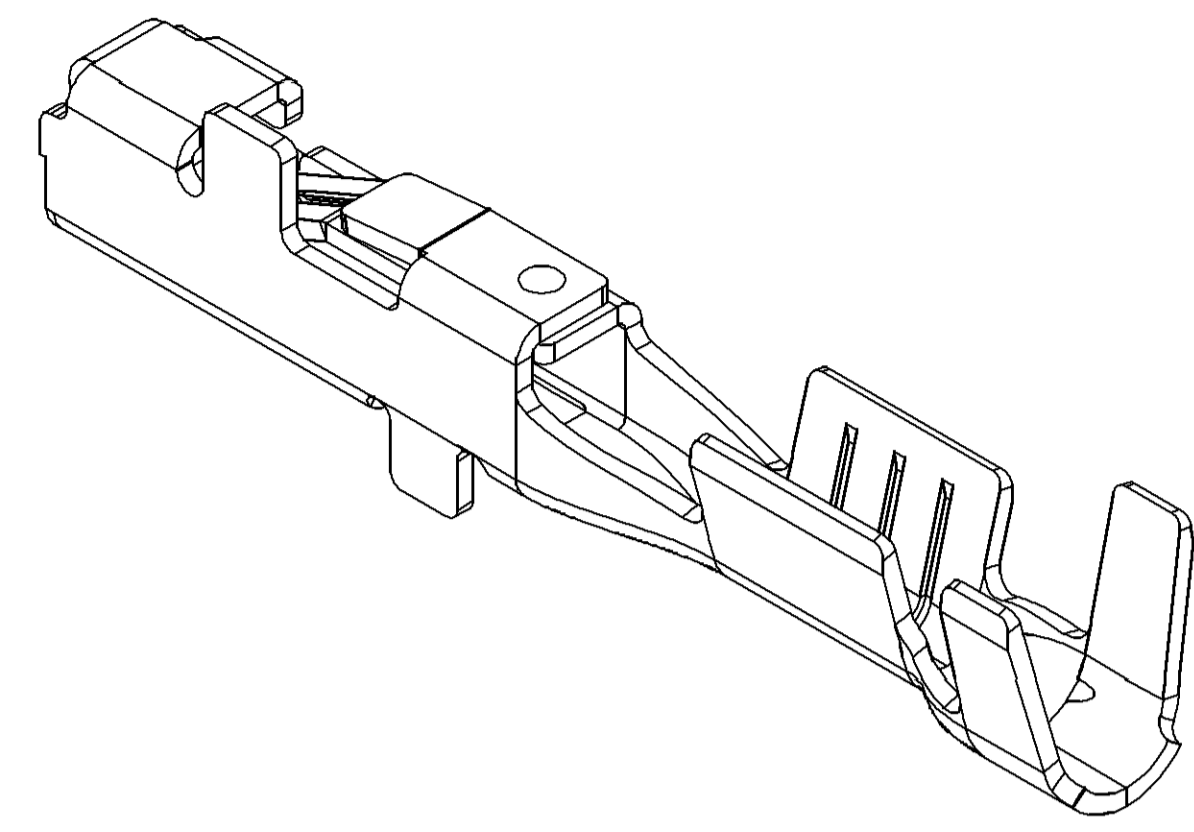


SYMBOL DEFINITION		MISSING SYMBOLS	
A DIMENSION WITHOUT AN INSPECTION REPORT SYMBOL  DOES NOT REQUIRE INSPECTION. IT MAY BE CONTROLLED ON THE INDIVIDUAL COMPONENT DRAWING.	TOTAL NO OF INSPECTIONS REQUIRED	15	NO MISSING SYMBOL NUMBER
	LAST NO. USED	15	

DWG STATUS				REVISION HISTORY				AUTH		DR		APVD	
DATE	STG	REV	N/P	CHG	ZONE								
09JUN04	R	01	-	-		ALL PARTS - RELEASED		255802	ADK	ADK	JAB		
10DEC04	R	02	-	-		ALL PARTS - 0.48 +0.05/-0.075 WAS 0.48 +0.075/-0.05		261765	ADK	ADK	RC		
29MR05	R	03	-	-		ALL PARTS - UPDATED PDM ATTRIBUTES: 15496301 - WAS TYPE 102		266344	MDH	JAA	RC		
05JUN07	R	04	-	-		ALL PARTS - UPDATED PDM ATTRIBUTES		401605	WHC	WHC	MJC		
17OCT08	R	05	-	-		13737284 - RELEASED		406420	MH	PYP	MH		
01DEC08	R	06	-	-		ALL PARTS - UPDATED MAT'L CALLOUT		406814	MH	PYP	MH		
21AP10	R	07	-	-		ALL PARTS - UPDATED PDM ATTRIBUTES		410529	ARC	ARC	MAC		
27AUG10	R	08	-	-		ALL PARTS - ADDED PLATING NOTE, UPDATED MAT'L CALLOUT AND ADDED CONTACT AREA & CRIMP AREA COLUMNS ON CHART		411804	JRL	JRL	VMR		
11OCT10	R	09	-	-		ALL PARTS - UPDATED PLATING NOTES		412167	CB8	CB8	MAC		
24FEB12	R	10	-	-		ALL PARTS - UPDATED PDM ATTRIBUTES		417234	JCF	JVM	OAF		
11MAY12	R	11	-	-		ALL PARTS - UPDATED PDM ATTRIBUTES		418144	AJP	AJP	RAP		



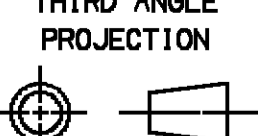
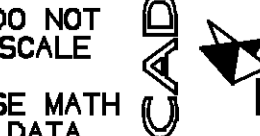

TERMINAL AND CABLE ALIGNMENT
SCALE 5:1

NOTES

- UNLESS OTHERWISE SPECIFIED AND/OR INDICATED:
DIMENSIONS ARE TO FACE OF VIEW SHOWN AND AUTOMATICALLY ROUNDED BY COMPUTER FOR INSPECTION (SEE MATH MODEL FOR PRECISE DIMENSIONS). FOR ALL OTHER DIMENSIONS NOT SHOWN BUT REQUIRED FOR TOOL BUILD, SEE MATH MODEL FOR PRECISE TOOL PATH DATA.
- * DENOTES DIMENSIONS MADE AT CUT-OFF AND CRIMP DIE.
- DO NOT PROBE, TEST OR OTHERWISE CONTACT THE INTERIOR REGION (THE SPRING OR ANY MOVING PART) OF THIS TERMINAL. SEVERE DAMAGE CAN OCCUR, COMPROMISING THE PERFORMANCE OF THE ELECTRICAL INTERFACE.
- PLATING TYPE:
1. REFLOW TIN 1.9-3.3 MICROMETERS THICK WITH A COPPER UNDERPLATE 0.5 MICROMETER TO 1.0 MICROMETER THICK.

PLATING TYPE INFORMATION SHOWN ABOVE IS REFERENCE ONLY, PLATING REQUIREMENTS ARE CONTAINED IN APPLICABLE MATERIAL SPECIFICATION.

13 PROCESS SENSITIVE DIMENSION	
DIMENSIONS ENCLOSED IN () INDICATE REFERENCE DIMENSIONS AND NO TOLERANCE LIMITS ARE ESTABLISHED	
DIMENSIONAL RANGE (MM)	CHART 'D'
FROM 0 TO 12	> 12
TOLERANCE UNLESS OTHERWISE SPECIFIED	
±0.1	±0.2
ANGULAR TOLERANCE ±2°	

DWG TYPE PART DRAWING	
STYLE	
VOLUME (C/P)	DISTR CODE D
UNLESS OTHERWISE SPECIFIED	
THIS DOCUMENT IS IN ACCORDANCE WITH ASME Y14.5M-1994 AS AMENDED BY THE 0M GLOBAL DIMENSIONING AND TOLERANCING ADDENDUM - 1997. ALL GEOMETRIC TOLERANCES AND RELATED DATUMS APPLY RFS. RULE #1 (PERFECT FORM AT MMPI) DOES NOT APPLY WHEN RELATIONSHIP BETWEEN FEATURES IS ESTABLISHED BY ORIENTATION OR LOCATION TOLERANCES. SEPARATE POSITION CALLOUTS MAY BE GAGED SEPARATELY, REGARDLESS OF DATUM REFERENCE. ALL DIMENSIONS ARE IN MILLIMETERS	
REFERENCE 12191810	
THIRD ANGLE PROJECTION	DO NOT SCALE
	
USE MATH DATA	

DELPHI
DELPHI PACKARD ELECTRICAL/ELECTRONIC ARCHITECTURE
WARREN, OH

DR	DATE
APVD1 ADAM D. KIMBERLIN	09JUN04
APVD2 ADAM D. KIMBERLIN	09JUN04
APVD3 J. BUTLER	09JUN04
APVD4	
APVD5	

SUBSTANCES OF CONCERN AND RECYCLED CONTENT PER DELPHI 10949001

MATERIAL
SEE CHART

DRAWING NAME
TAXI TERM F 0T 150

DRAWING NUMBER
15496996

SIZE	SCALE	FRAME NO	SHEET NO	STG	REV	N/P
A1	10:1	1 OF 1	1 OF 1	R	11	-

13737284	01	AF	-	0.3 X 27.38	COPPER ALLOY	0.22 - 0.13	25	0.81 - 1.1	102	1.8 ±0.15	1	1
15496301	01	AJ	-	0.3 X 27.38	COPPER ALLOY	0.35 - 0.5	21	1.85 - 1.2	101	2.1	1	1
15496302	01	AJ	-	0.3 X 27.38	COPPER ALLOY	0.75 - 1	17	2.25 - 1.7	101	2.65	1	1
PART NO	REV	N/P	STATUS	MAT'L SIZE	MAT'L DESCRIPTION	SIZE (MM²)	ID	DIA	TYPE	B ₁ ±0.2	CONTACT AREA PLATING TYPE (SEE NOTE 4)	CRIMP AREA PLATING TYPE (SEE NOTE 4)

Mouser Electronics

Authorized Distributor

Click to View Pricing, Inventory, Delivery & Lifecycle Information:

[Aptiv:](#)

[15496302](#) [15496301](#)