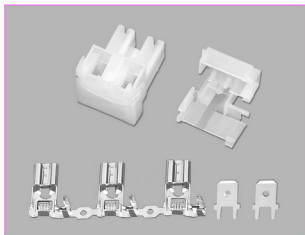


技术参数 SPECIFICATIONS

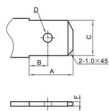
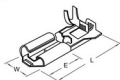
- 适用线规 (Applicable wires) : AWG20#~12#
- 温度范围 (Temperature range) : -25℃~85℃
- 额定电压 (Voltage rating) : 300V.Ac/Dc
- 额定电流 (Current rating) : 18A max
- 接触电阻 (Contact resistance) : $\leq 0.01\Omega$
- 绝缘电阻 (Insulation resistance) : $\geq 1000M\Omega$
- 耐压 (Withstand voltage) : 2000V.Ac/1min
- 材料 (Material) :
 - 壳体 (Housing) : 尼龙 (PA66) UL94V-2(0)
 - 端子 (Terminal) : 黄铜 (Brass Tin/plated)



.250" 端子 TERMINAL

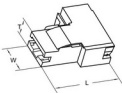
型号 Type	适用线规 Applicable wires	材料 Material	尺寸 Dimensions (mm)				数量 Quantity		
			mm ²	AWG#	W	L		E	材料厚度 Thickness
HX6.3HS-21T	730574-3	黄铜	0.5~1.25	20~16	7.5	20.1	9.5	0.4	5000PCS/卷
HX6.3HS-41T	730575-3	黄铜	2.0~3.1	14~12	7.5	20.1	9.5	0.4	5000PCS/卷

HX6.3HS-T

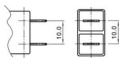
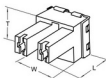


型号 Type	尺寸 Dimensions (mm)				
	A	B	C	D	F
.250"	8.3	3.8	6.35	φ2.0	0.8

.250" 壳体 HOUSING



型号 Type	尺寸 Dimensions (mm)			适配端子 Suitable Terminal
	L	T	W	
HX 6.3QS (630592.250)	23.5	5.7	9.8	HX6.3HS-21T HX6.3HS-41T



型号 Type	尺寸 Dimensions (mm)			适配端子 Suitable Terminal
	L	T	W	
HX 6.3S-2H (630823.250)	24.0	19.3	17.8	HX6.3HS-21T HX6.3HS-41T