

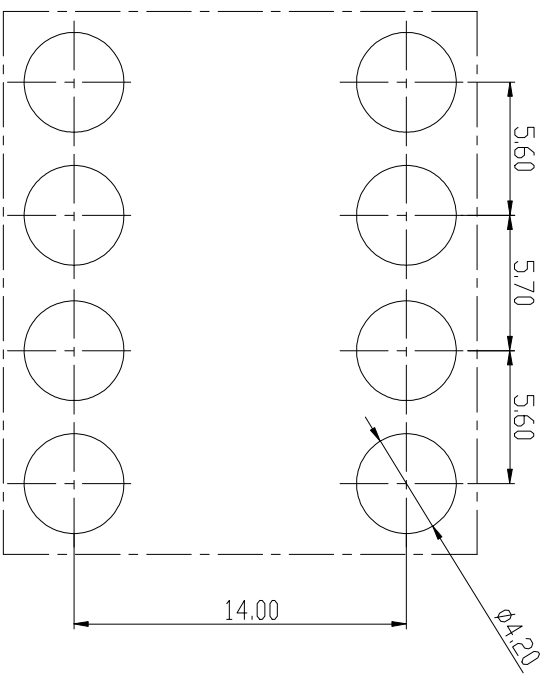
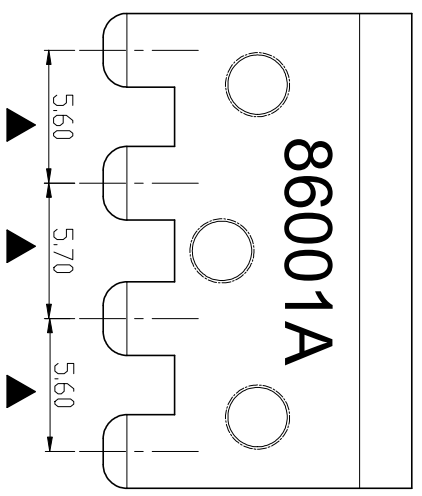
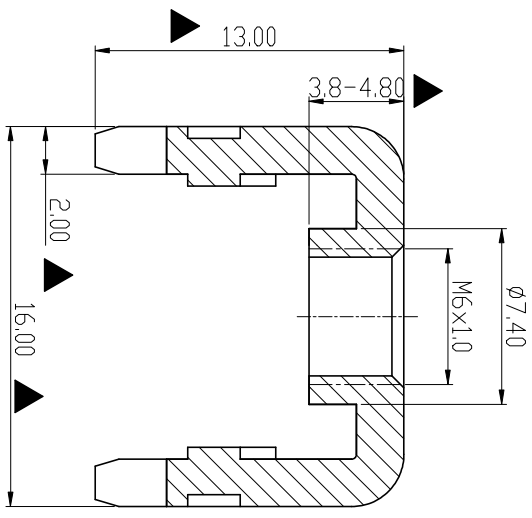
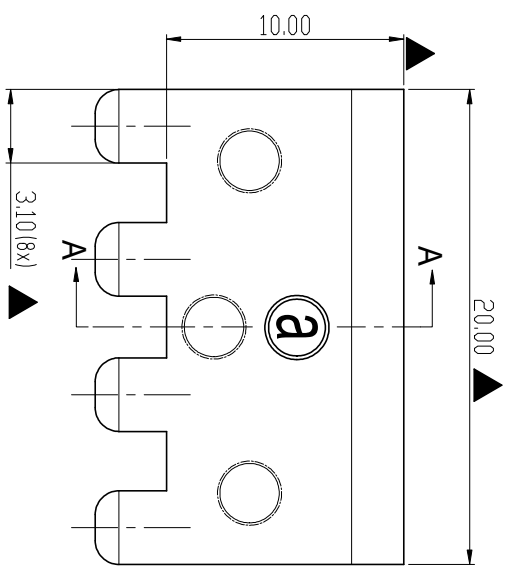
RoHS Compliant

Rev.	SIGN	DATE	DESCRIPTION	APPROVER
A0		2023.10.18		

THIS IS CAD DRAWING, DO NOT REVISE MANUALLY!!!

Technical Specification:

1. Material: Copper alloy ,Matte Tin Plated
2. Current: 200A.
3. Torque: 30 lbf.in.
4. MARK "▲" is the Critical dimension.



Amphenol		CUSTOMER COPY	
ANYTEK		ALL RIGHTS RESERVED. REPRODUCTION OR ISSUE TO THIRD PARTIES IN ANY FORM WHATSOEVER IS NOT PERMITTED WITHOUT WRITTEN AUTHORITY FROM THE PROPRIETOR. PROPERTY OF ANYTEK TECHNOLOGY CO., LTD	
TITLE	AMT86001A Stamped terminal	DWG NO.	8AMT10002
PART NO.	AMT0860001TA0000G	CUST NO.	
APPROVED	CHECKED	DESIGNED	DRAWN
	Seamus 2023.10.17	Seamus 2023.10.17	
Tolerance:		UNIT:	mm
>30		SCALE:	NONE
6-30		REV:	A0
0-6		SHEET:	01/01
ANGLES			±1°

PCB LAYOUT