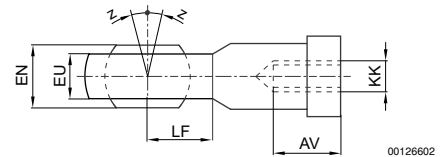
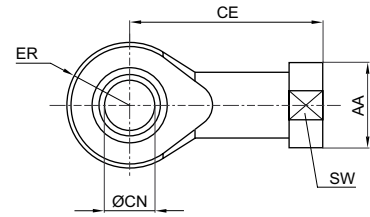


Cylinder accessories → piston rod mountings, series CM2

AP6, Ball eye rod end



00105172



00126602

Part No.	KK	AA	AV min.	CE	Ø CN H7	EN -0,1	ER	EU max.	LF	SW	Z [°] max.
1822124000	M4	12	8	27	5	8	9	7.5	9	9	4
1822124001	M6	13	9	30	6	9	10	7.5	10	11	4
1822124002	M8	16	12	36	8	12	12	9.5	12	14	4
8958206402	M10	19	20	43	10	14	14	10.5	13	17	6
1822124003	M10x1,25	19	15	43	10	14	14	11.5	14	17	4
1822124004	M12x1,25	22	18	50	12	16	16	12.5	16	19	4
1822124005	M16x1,5	27	24	64	16	21	21	15.5	21	22	4
1822124006	M20x1,5	34	30	77	20	25	25	18.5	25	30	4
1822124013	M27x2	50	45	110	30	37	35	27	35	41	4
1822124008	M36x2	60	56	125	35	43	40	32	40	50	4
1822124009	M42x2	69	60	142	40	49	45.5	37	45	55	4
8958208842	M48x2	75	65	160	50	60	58	45	60	65	6
8958208852	M12	22	22	50	12	16	16	12	16	19	13
3660904000	M12x1,25	22	16	50	12	12	17	8	16	19	8
3660905000	M16x1,5	29	24	67	16	16	23	11	20	24	8
3660908000	M20x1,5	34	30	77	20	20	26.5	13	23	30	8
3660912000	M24x2	42	36	94	25	25	32	17	27	36	8
8958208002	M24x2	42	36	94	25	31	30	23	30	36	15
8958209002	M4	11	8	27	5	8	9	6	9	9	6.5
8958209012	M6	13	9	30	6	9	10	6.75	10	11	6.5
8958209022	M8	16	12	36	8	12	12	9	12	14	6.5
8958209032	M10x1,25	19	15	43	10	14	14	10.5	14	17	6.5
8958209042	M12x1,25	22	18	50	12	16	16	12	16	19	6.5
8958209052	M16x1,5	27	24	64	16	21	21	15	21	22	7.5
8958209062	M20x1,5	34	30	77	20	25	25	18	25	30	7.5
8958209072	M27x2	50	45	110	30	37	35	25	35	41	7.5
2990690903	M10x1,25	19	20	43	10	14	14	10.5	14	17	7
2990690904	M12x1,25	22	22	50	12	16	16	12	16	19	7
2990690905	M16x1,5	27	28	64	16	21	21	15	21	22	8
2990690908	M20x1,5	34	33	77	20	25	25	18	25	32	8
2990600903	M10x1,25	19	16	43	10	9	15	9	14	-	8
2990600904	M12x1,25	22	18	50	12	12	17	9	16	-	8
2990600905	M16x1,5	28	26	67	16	16	23	12	20	-	8

Cylinder accessories → piston rod mountings, series CM2

AP6, Ball eye rod end

Part No.	KK	AA	AV min.	CE	Ø CN H7	EN -0,1	ER	EU max.	LF	SW	Z [°] max.
2990600908	M20x1,5	32	32	77	20	20	26	14	23	-	8
2990600912	M27x2	52	51	110	30	37	35	18	36	-	4
2990600916	M36x2	53	53	125	35	35	42	24	37	-	6

Part No.	Material	Surface	Weight [kg]	Note							
1822124000	Steel	galva- nized	0.02	-							
1822124001	Steel	galva- nized	0.03	-							
1822124002	Steel	galva- nized	0.05	-							
8958206402	Steel	galva- nized	0.066	-							
1822124003	Steel	galva- nized	0.07	-							
1822124004	Steel	galva- nized	0.12	-							
1822124005	Steel	galva- nized	0.21	-							
1822124006	Steel	galva- nized	0.38	-							
1822124013	Steel	galva- nized	1.17	-							
1822124008	Steel	galva- nized	2	-							
1822124009	Steel	galva- nized	3.4	-							
8958208842	Steel	galva- nized	5.2	-							
8958208852	Steel	galva- nized	0.11	-							
3660904000	Steel	galva- nized	0.119	1)							
3660905000	Steel	galva- nized	0.282	1)							
3660908000	Steel	galva- nized	0.435	1)							
3660912000	Steel	galva- nized	0.791	1)							
8958208002	Steel	galva- nized	0.729	-							
8958209002	Stainless steel	-	0.022	-							
8958209012	Stainless steel	-	0.035	-							
8958209022	Stainless steel	-	0.057	-							
8958209032	Stainless steel	-	0.09	-							
8958209042	Stainless steel	-	0.12	-							
8958209052	Stainless steel	-	0.23	-							
8958209062	Stainless steel	-	0.41	-							
8958209072	Stainless steel	-	1.24	-							
2990690903	Stainless steel, acid-proof	-	0.1	-							

1) narrow version

Cylinder accessories → piston rod mountings, series CM2

AP6, Ball eye rod end

Part No.	Material	Surface	Weight	Note						
			[kg]							
2990690904	Stainless steel, acid-proof	-	0.12	-						
2990690905	Stainless steel, acid-proof	-	0.23	-						
2990690908	Stainless steel, acid-proof	-	0.42	-						
2990600903	Stainless steel, acid-proof	-	0.1	-						
2990600904	Stainless steel, acid-proof	-	0.2	-						
2990600905	Stainless steel, acid-proof	-	0.4	-						
2990600908	Stainless steel, acid-proof	-	0.5	-						
2990600912	Stainless steel, acid-proof	-	1.1	-						
2990600916	Stainless steel, acid-proof	-	1.4	-						
1) narrow version										