



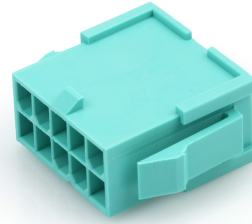
Part Number : [469931030](#)

Product Description : Mini-Fit Versa Color Plug Housing, Dual Row with Panel Mount Ears, Nylon 6/6, UL 94V-0, 10 Circuits, Glow-Wire Capable, Green

Series Number : 46993

Status : Active

Product Category : Connector Housings



Documents & Resources

Drawings

[Drawing 469931030_sd.pdf](#)

3D Models and Design Files

[3D Model 469931030_stp.zip](#)

Specifications

[Packaging Specification PK-5559-001-001.pdf](#)

[Product Specification PS-5556-001-001.pdf](#)

Product Environment Compliance

Compliance

GADSL/IMDS	Not Relevant
China RoHS	
EU ELV	Not Relevant
Low-Halogen Status	Not Low-Halogen per IEC 61249-2-21
REACH SVHC	Not Contained per D(2024)4144-DC (27 June 2024)
EU RoHS	Compliant per EU 2015/863

Multiple Part Product Compliance Statements

- Eu RoHS
- REACH SVHC
- Low-Halogen

Multiple Part Industry Compliance Documents

- IPC 1752A Class C

- IPC 1752A Class D
- Molex Product Compliance Declaration
- IEC-62474
- chemSHERPA (xml)

EU RoHS Certificate of Compliance

Part Details

General

Status	Active
Category	Connector Housings
Series	46993
Description	Mini-Fit Versa Color Plug Housing, Dual Row with Panel Mount Ears, Nylon 6/6, UL 94V-0, 10 Circuits, Glow-Wire Capable, Green
Application	Power, Wire-to-Board, Wire-to-Wire
Product Family	Mini-Fit Family Power Connectors
Product Name	Mini-Fit Versa Color
UPC	195842022171

Agency

CSA	LR19980
UL	E29179

Physical

Circuits (maximum)	10
Color - Resin	Green
Flammability	94V-0
Gender	Plug
Glow-Wire Capable	Yes
Keying to Mating Part	None
Lock to Mating Part	Yes
Material - Resin	Nylon
Net Weight	3.130/g
Number of Rows	2
Packaging Type	Bag

Panel Mount	No
Pitch - Mating Interface	4.20mm
Pitch - Termination Interface	4.20mm
Polarized to Mating Part	Yes
Temperature Range - Operating	-40° to +105°C

Mates With / Use With

Mates with Part(s)

Description	Part Number
Mini-Fit Jr. Dual Row Receptacle Housings	<u>46992</u>

Use with Part(s)

Description	Part Number
Mini-Fit Male Crimp Terminals	<u>5558</u>