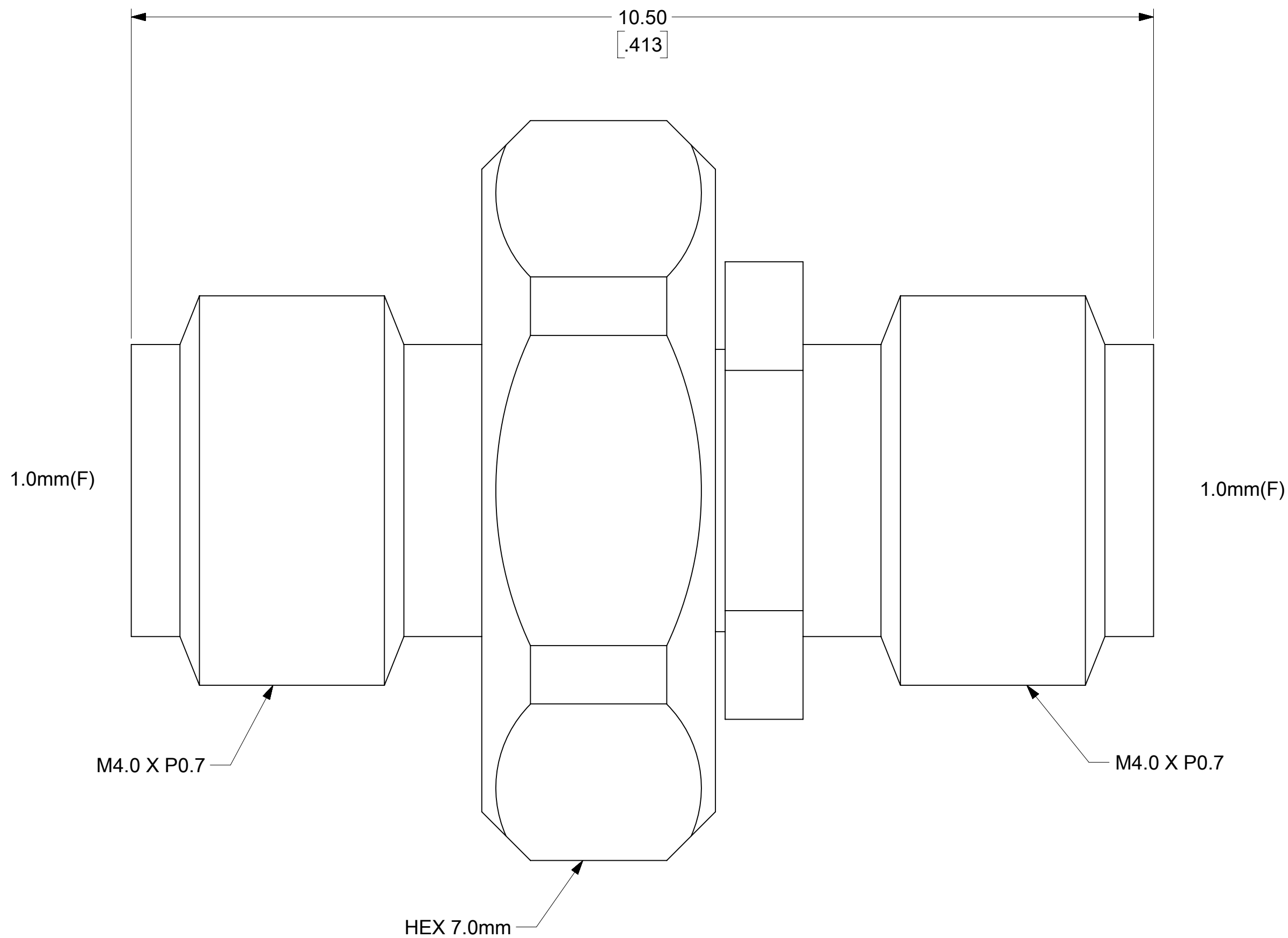


NOTES:

1. MATERIALS:
 CONTACT: BERYLLIUM COPPER
 ALL OTHER METAL PARTS: STAINLESS STEEL
 INSULATOR: ULTEM1000
2. FINISH:
 CONTACT: GOLD
 ALL OTHER METAL PARTS: PASSIVATED
3. MECHANICAL/ENVIRONMENTAL:
 DURABILITY: 500 CYCLES
 TEMP RANGE: -65°C to +165°C
4. ELECTRICAL:
 IMPEDANCE: 50Ω
 FREQUENCY RANGE: DC to 110GHz
 VSWR(dB): 1.3:1 (-17.69dB)



FUNCTIONAL SYMBOLS	THIS DRAWING CONTAINS INFORMATION THAT IS PROPRIETARY TO MOLEX ELECTRONIC TECHNOLOGIES, LLC AND SHOULD NOT BE USED WITHOUT WRITTEN PERMISSION														
	DIMENSION UNITS	SCALE	CURRENT REV DESC: UPDATED TO GENERAL MARKET							molex					
$\frac{F}{A} = 0$	MM/INCH	NTS	EC NO: 735515									1.0MM JACK TO 1.0MM JACK ADAPTER			
$\frac{F}{C} = 0$	GENERAL TOLERANCES (UNLESS SPECIFIED)		DRWN: KTAGAN 2023/01/18							PRODUCT CUSTOMER DRAWING					
$\frac{F}{D} = 0$	ANGULAR TOL ± °		CHK'D: LMEIER 2023/01/18							DOCUMENT NUMBER					
DIVISIONAL SYMBOLS	4 PLACES ±		APPR: JBORRELLI 2023/01/19							DOC TYPE					
	3 PLACES ±		INITIAL REVISION:							DOC PART					
	2 PLACES ±		DRWN: KTAGAN 2022/11/12							REVISION					
	1 PLACE ±		APPR: LMEIER 2022/12/15							A1					
0 PLACES ±		DRAFT WHERE APPLICABLE MUST REMAIN WITHIN DIMENSIONS		THIRD ANGLE PROJECTION		DRAWING		SERIES		MATERIAL NUMBER		CUSTOMER		SHEET NUMBER	
				C-SIZE		73164		731640010				1 OF 1			

DOCUMENT STATUS	P1	RELEASE DATE	2023/01/19	15:05:56
-----------------	----	--------------	------------	----------