

# RP115 Series

## Compact Single Stage Power Line Filters



### 3 A to 20 A Chassis Mount Filter

#### Specifications

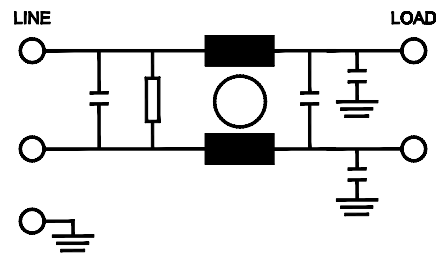
Operating Frequency	50/60 Hz
Usable Frequency	DC - 400 Hz
Max. Operating Voltage*	250 V +10%
Ambient Temperature	-25 to 40°C
Climatic Category	25/100/21
Hipot Rating (L-G)	2700 VDC
Terminals (-T)	QD: 0.25 Tabs
Safety Approvals	CSA, UR, EN60939
Typ. Weight, lbs (kg)	0.5 (0.2)

\*Available up to 300 VAC. Please contact us to verify specifications.

#### Part Number/Ordering

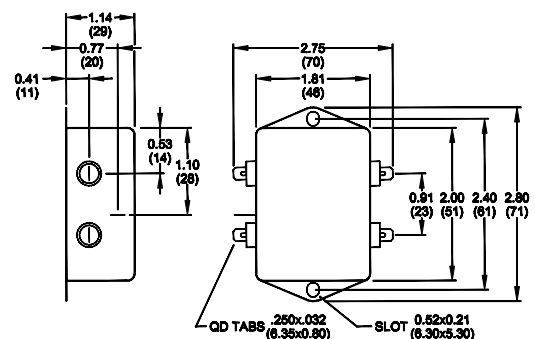
RP115	-X (Amps)	-Y (Ycap, nF)	-T
	3	0	QD
	6	0.47	
	10	1	
	16	2.2	
	20	4.7	
		10	

**Note:** Use any combination of -Y with any -X (Amps) rating  
e.g. RP115-16-2.2-QD (16 Amps with 2.2nF Ycap)

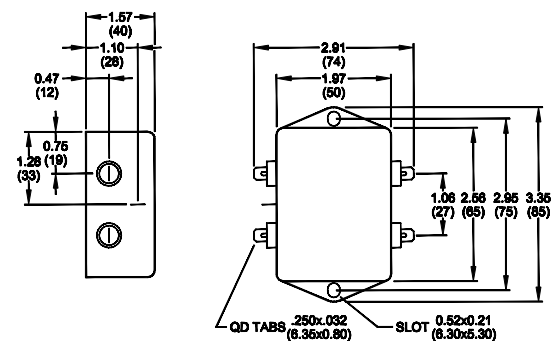


#### Mechanical Dimensions

##### 3/6 Amp



##### 10/16/20 Amp



Specifications are subject to change. Consult factory to verify specifications.

For more information on our filter products call us at: (800) 527-4362 or (714) 289-0055  
LCR, Radius Power, and Filter Concepts are now part of Astrodyne TDI

# RP115 Series

## Compact Single Stage Power Line Filters



### 3 A to 20 A Chassis Mount Filter

#### Typical Insertion Loss, dB (50/50 Ohm)

Freq (MHz)	0.15	0.5	1.0	10	30
<b>3 Amp</b>					
CM(dB)	28	36	44	58	64
DM(dB)	30	48	60	55	55
<b>6 Amp</b>					
CM(dB)	20	32	28	55	55
DM(dB)	20	32	40	58	70
<b>10 Amp</b>					
CM(dB)	34	44	54	50	44
DM(dB)	30	42	55	70	70
<b>16 Amp</b>					
CM(dB)	16	36	44	58	64
DM(dB)	28	40	55	70	70
<b>20 Amp</b>					
CM(dB)	20	28	34	55	60
DM(dB)	26	38	52	65	65

#### Leakage Current

Y-cap, nF	mA, 120 V/60 Hz	mA, 250 V/60 Hz
0	0.0	0.0
0.47	0.04	0.08
1	0.09	0.18
2.2	0.2	0.4
4.7	0.4	0.8
10	0.9	1.8

Specifications are subject to change. Consult factory to verify specifications.

For more information on our filter products call us at: (800) 527-4362 or (714) 289-0055  
LCR, Radius Power, and Filter Concepts are now part of Astrodyne TDI

# Mouser Electronics

Authorized Distributor

Click to View Pricing, Inventory, Delivery & Lifecycle Information:

## Astrodyne TDI:

[RP115-20-4.7-QD](#) [RP115-20-2.2-QD](#) [RP115-3-2.2-QD](#) [RP115-20-4.7-S](#) [RP115-3-2.2-W](#) [RP115-6-2.2-QD](#) [RP115-6-2.2-W](#) [RP115-6-4.7-QD](#) [RP115-3-4.7-QD](#) [RP115-6-4.7-W](#) [RP115-3-4.7-W](#)