



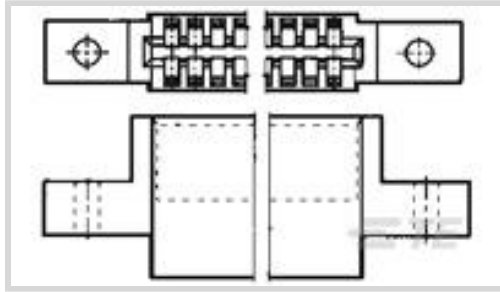
AMP | AMP Twin-Leaf

TE Internal #: 1-583861-1

Housing, Receptacle, Wire-to-Board, 17 Position, 2.54 mm [.1 in] Centerline, Crimp, 2 Row, Black, Mating Retention, AMP Twin-Leaf

[View on TE.com >](#)

Connectors > PCB Connectors > Wire-to-Board Connectors > Wire-to-Board Connector Assemblies & Housings



Connector Product Type: **Housing**

Connector & Housing Type: **Receptacle**

Connector System: **Wire-to-Board**

Number of Positions: **17**

Centerline (Pitch): **2.54 mm [.1 in]**

Features

Product Type Features

Connector Product Type	Housing
Connector & Housing Type	Receptacle
Connector System	Wire-to-Board
Connector & Contact Terminates To	Printed Circuit Board

Configuration Features

Number of Dual Positions	17
Number of Positions	17
Number of Rows	2

Body Features

Primary Product Color	Black
-----------------------	-------

Contact Features

Contact Current Rating (Max)	5 A
------------------------------	-----

Termination Features

Termination Method to Wire & Cable	Crimp
------------------------------------	-------

Mechanical Attachment

Strain Relief	Without
Panel Mount Feature Type	Mounting Ears
Mating Retention	With



Connector Mounting Type

Board Mount

Housing Features

Housing Material

Polyester GF

Centerline (Pitch)

2.54 mm [.1 in]

Dimensions

.75 in

Usage Conditions

Operating Temperature Range

-55 – 105 °C [-67 – 221 °F]

Operation/Application

Circuit Application

Power & Signal

Industry Standards

Glow Wire Rating

Standard Part - Not Glow Wire

UL Flammability Rating

UL 94V-0

Packaging Features

Packaging Quantity

275

Packaging Method

Box

Product Compliance

[For compliance documentation, visit the product page on TE.com>](#)

EU RoHS Directive 2011/65/EU

Compliant

EU ELV Directive 2000/53/EC

Compliant

China RoHS 2 Directive MIIT Order No 32, 2016

No Restricted Materials Above Threshold

EU REACH Regulation (EC) No. 1907/2006

Current ECHA Candidate List: JUNE 2024 (241)

Candidate List Declared Against: JUNE 2024 (241)

Does not contain REACH SVHC

Halogen Content

Not Low Halogen - contains Br or Cl > 900 ppm.

Solder Process Capability

Not applicable for solder process capability

Product Compliance Disclaimer

This information is provided based on reasonable inquiry of our suppliers and represents our current actual knowledge based on the information they provided. This information is subject to change. The part numbers that TE has identified as EU RoHS compliant have a maximum concentration of 0.1% by weight in homogenous materials for lead, hexavalent chromium, mercury, PBB, PBDE, DBP, BBP, DEHP, DIBP, and 0.01% for cadmium, or qualify for an exemption to these

limits as defined in the Annexes of Directive 2011/65/EU (RoHS2). Finished electrical and electronic equipment products will be CE marked as required by Directive 2011/65/EU. Components may not be CE marked. Additionally, the part numbers that TE has identified as EU ELV compliant have a maximum concentration of 0.1% by weight in homogenous materials for lead, hexavalent chromium, and mercury, and 0.01% for cadmium, or qualify for an exemption to these limits as defined in the Annexes of Directive 2000/53/EC (ELV). Regarding the REACH Regulation, the information TE provides on SVHC in articles for this part number is based on the latest European Chemicals Agency (ECHA) 'Guidance on requirements for substances in articles' posted at this URL: <https://echa.europa.eu/guidance-documents/guidance-on-reach>

Also in the Series | AMP Twin-Leaf



Connector Contacts(15)



Insertion & Extraction Tools(1)



Wire-to-Board Connector Assemblies & Housings(17)

Customers Also Bought



TE Part #1318105-1
DYNAMIC D-2000 REC CONT M



TE Part #179609-1
AMP CT CRIMP TTYPE-2 REC CONT.



TE Part #823635-000
382A023-3/42-0



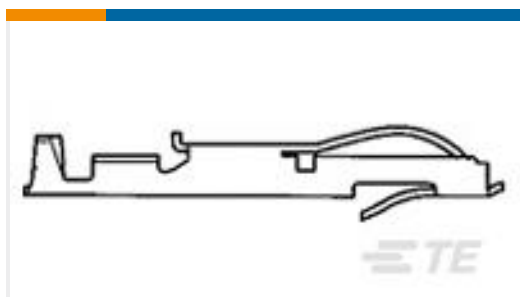
TE Part #2-292227-0
1.5 MINI CT SGL H SMT W BOSS 2



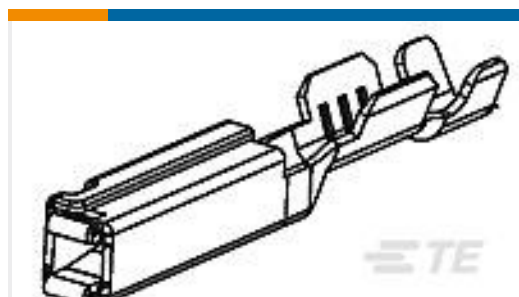
TE Part #2-520401-2
ULTRA-FAST 187 ASY REC 22-18 TPBR



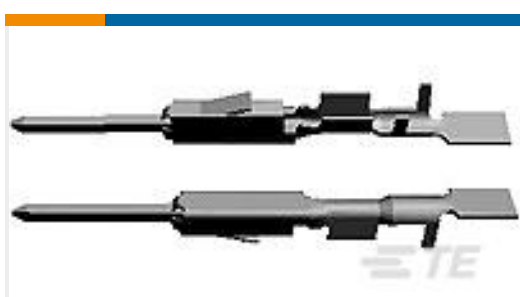
TE Part #292228-2
1.5 MINI CT SGL H SMT W/O BOSS



TE Part #583853-3
TWIN LEAF TERM. STRIP CSTL



TE Part #1393367-1
V23540X7000Y 11=GET-FEM TERM S



TE Part #6-928918-1
MQS0,63 Sn tab LL unseal. 0,2-0,35



TE Part #926539-6
250 FASTON HSG. REC. 1P NATURAL

Documents



Product Drawings

[TW-LEAF CRP. HSG 17 POS. 100 C](#)

English

CAD Files

Customer View Model

[ENG_CVM_CVM_1-583861-1_AK.2d_dxf.zip](#)

English

[3D PDF](#)

3D

Customer View Model

[ENG_CVM_CVM_1-583861-1_AK.3d_igs.zip](#)

English

Customer View Model

[ENG_CVM_CVM_1-583861-1_AK.3d_stp.zip](#)

English

By downloading the CAD file I accept and agree to the [Terms and Conditions](#) of use.

Product Specifications

[Product Specification](#)

English

[Product Specification](#)

English

Instruction Sheets

[Instruction Sheet \(U.S.\)](#)

English

Agency Approvals

[UL](#)

English