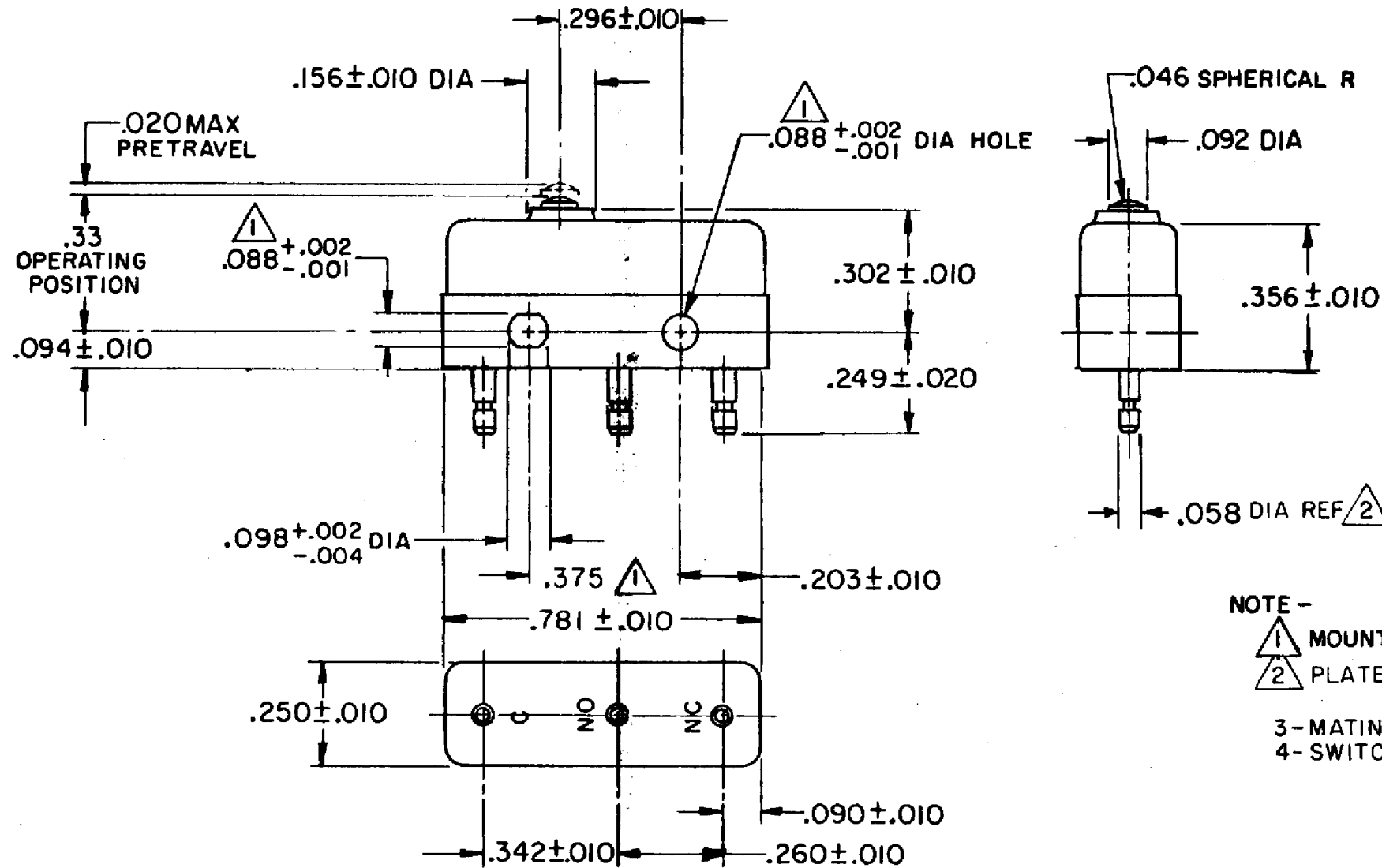
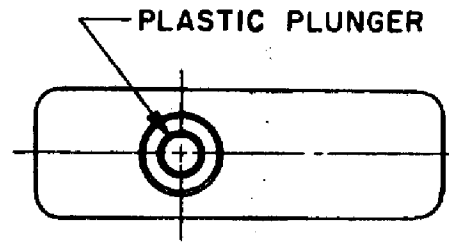


HONEYWELL
PART NUMBER
11SM1077-H58
PRODUCT CODE
TWY2328

REV	DOCUMENT	CHANGED BY	CHECK
3	0038444	KVS 09APR08	ASD



NOTE -

- 1 MOUNTING HOLES WILL ACCEPT PINS OR SCREWS OF .087 MAX DIA ON .375 ± .002 CENTERS
- 2 PLATED TERMINALS WILL ACCEPT "AMP INC" .058 DIA PIN RECEPTACLES
- 3-MATING CONTACT SURFACES ARE OVERLAYS OF 24K SOLID GOLD AND GOLD ALLOY
- 4-SWITCH WILL WITHSTAND TEMPERATURE OF 250°F

RELEASE NO.	PR - 7100
REPLACES	-

CHARACTERISTICS	
OPERATING FORCE - - - -	3 - 5 OZ
RELEASE FORCE - - - - -	1 OZ MIN
DIFFERENTIAL TRAVEL - - -	.004 MAX
OVERTRAVEL - - - - -	.005 MIN

ELECTRICAL DATA	
CONTACT ARRANGEMENT SPDT	
APPROVALS	UL, CSA 0.1A 125 VAC 30 VDC BRAND L171

DESIGN UNITS: INCH
TOLERANCES UNLESS NOTED:
NO PLACE X ±
ONE PLACE .X ±
TWO PLACE .XX ±
THREE PLACE .XXX ±
FOUR PLACE .XXXX ±
ANGLES ±
THIRD ANGLE PROJECTION

DRAWN	VK	14 FEB 08
CHECK	RJ	14 FEB 08
THIS DRAWING COVERS A PROPRIETARY ITEM AND IS THE PROPERTY OF HONEYWELL. THIS DRAWING IS NOT TO BE COPIED OR USED WITHOUT THE PERMISSION OF HONEYWELL.		
INTERPRET PER ANSI Y14.5M-1982 OTHER HONEYWELL ENGINEERING STANDARDS MAY APPLY		
RASTER		

Honeywell			
TITLE SWITCH - BASIC			
SIZE	TYPE	DRAWING NAME	REV
B	I	11SM1077-H58	3
SCALE	-	WEIGHT .006 LB MAX	SHEET 1 OF 1