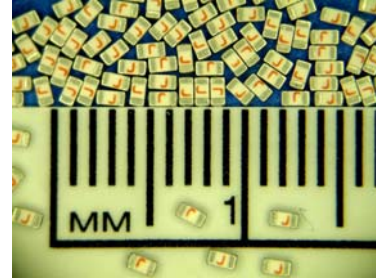


SolidMatrix® 0603 Slow Blow Surface Mount Fuses

NEW!


Features:

- High inrush current withstanding capability
- Ceramic Monolithic structure
- Silver fusing element and silver termination with nickel and tin plating
- RoHS compliant materials
- Standard EIA0603 / EIAJ1608 size
- Symmetrical design with marking on both sides (optional)
- Operating temperature: -55°C to 125°C (with de-rating)



Clear-Time Characteristics:

% of Current Rating	Opening Time at 25°C	
	Min.	Max.
100%	4 hours	
200%	1 sec	120 sec
300%	0.1 sec	3 sec
800% (1-1.5A)	0.0005 sec	0.05 sec
800% (2-5A)	0.001 sec	0.05 sec

Agency Approval: Recognized Under the Components Program of Underwriters Laboratories. File Number: E232989

Patents: U.S. Patent numbers 6,034,589, 6,228,230, 6,602,766, and other pending patents

Interrupting Ratings:

1A - 5A 40A at rated voltage

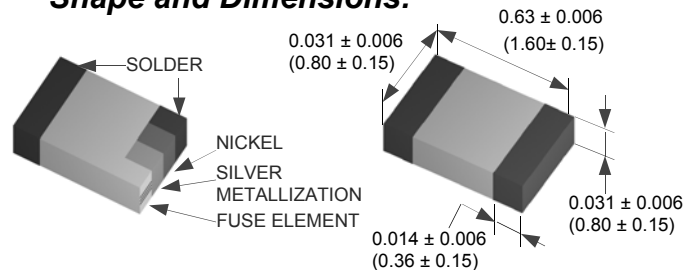
Marking(Optional): Red Marking Character Code
 1A:E, 1.5A:G, 2A:I, 2.5A:J, 3A:K, 3.5A:L, 4A:M,
 4.5A:T, 5A:N

Ordering Information:

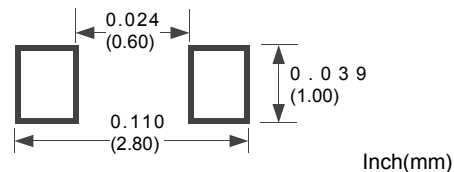
Part Number	Current Rating (A)	Voltage Rating (VDC)	Nominal Cold DCR Ω^1	Nominal I^2t (A ² s) ²
F0603SB1000V032T	1.00	32	0.200	0.093
F0603SB1500V032T	1.50	32	0.100	0.18
F0603SB2000V032T	2.00	32	0.052	0.32
F0603SB2500V032T	2.50	32	0.041	0.63
F0603SB3000V032T	3.00	32	0.031	0.87
F0603SB3500V032T	3.50	32	0.021	1.20
F0603SB4000V032T	4.00	32	0.017	2.30
F0603SB4500V032T	4.50	32	0.015	2.70
F0603SB5000V032T	5.00	32	0.013	3.20

1. Measured at $\leq 10\%$ of rated current and 25°C ambient
 2. Melting I^2t at 0.001 sec clear-time

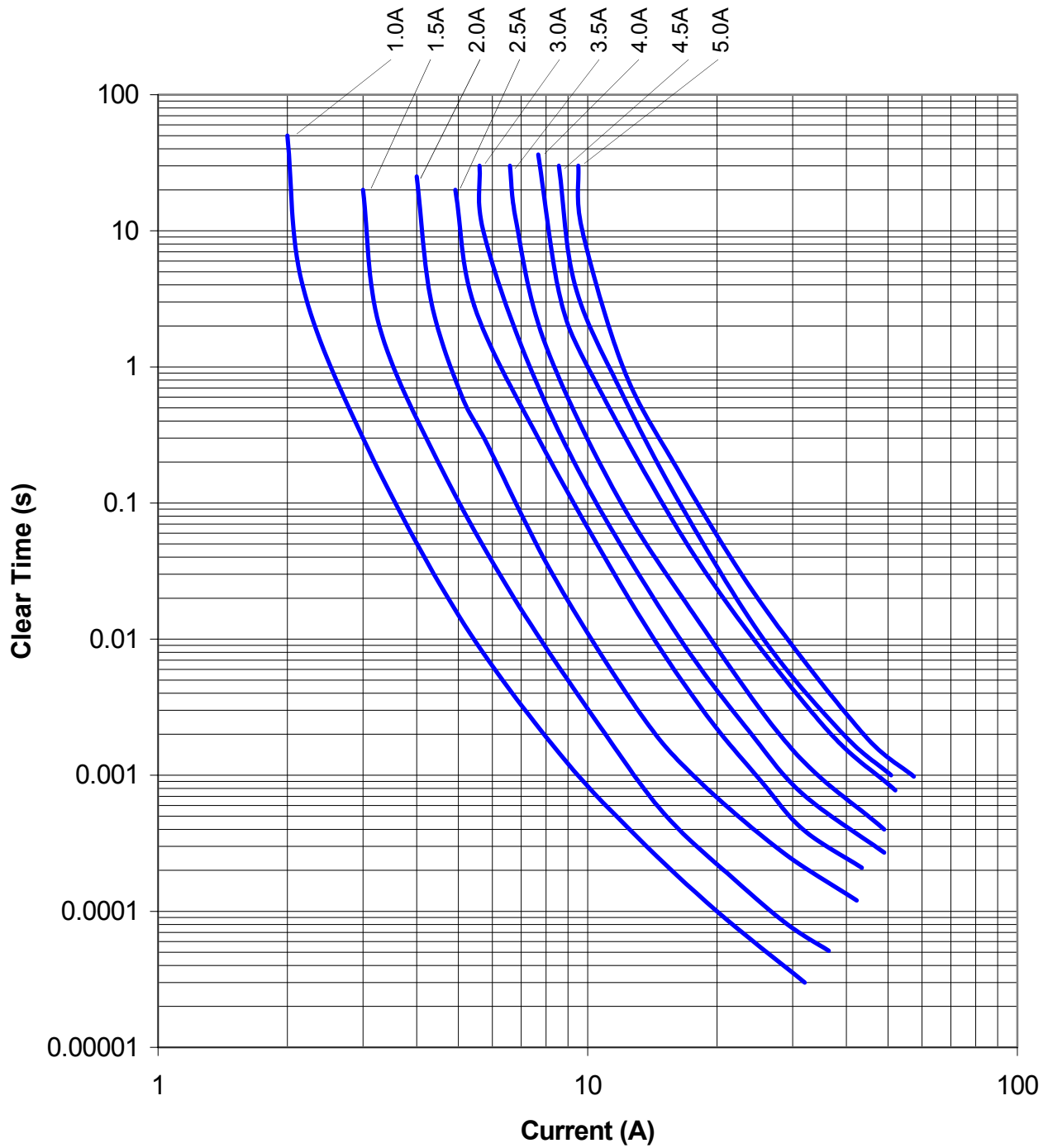
Shape and Dimensions:



Recommended Land Pattern:



SolidMatrix® 0603 Slow Blow Surface Mount Fuses
NEW!

Average Clear-Time Curves


SolidMatrix® 0603 Slow Blow Surface Mount Fuses

NEW!



I²t vs. t Curves

