



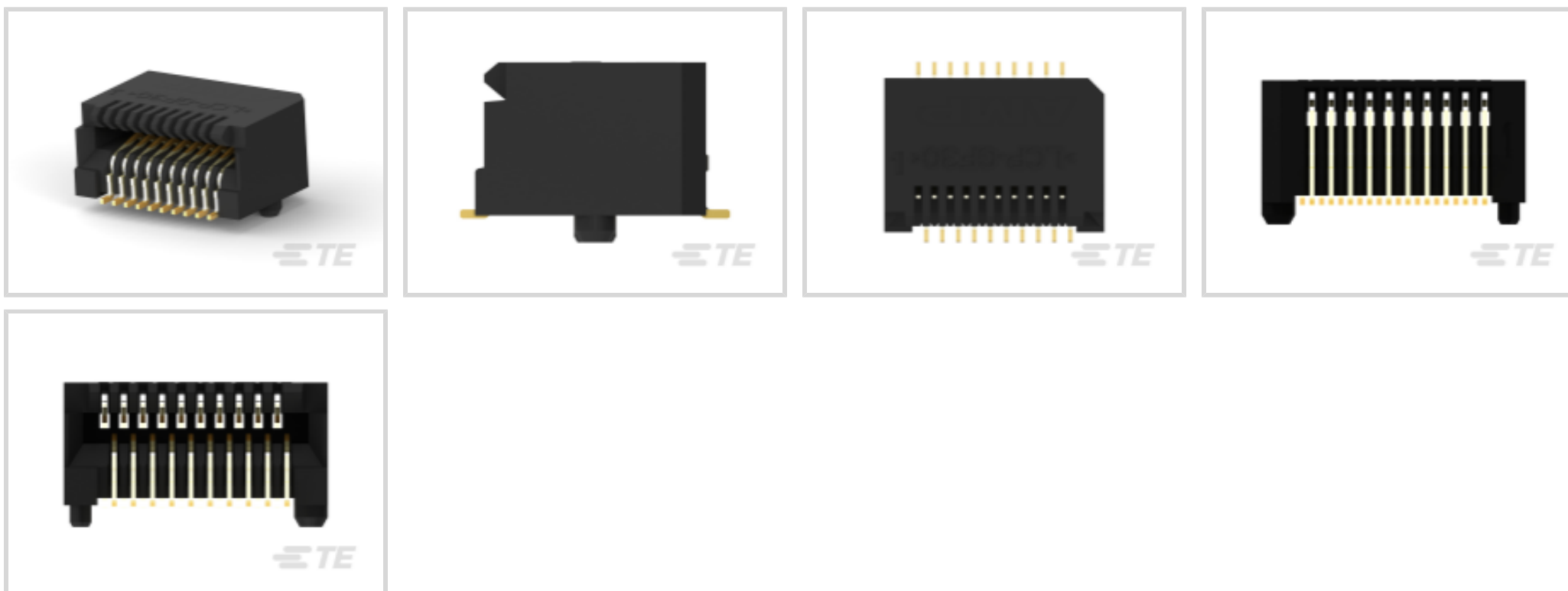
SFP28

TE Internal #: 1367073-1

SFP, Connector, .8mm [.031in] Centerline, Signal, Operating Temperature Range -55 – 85 °C [-67 – 185 °F], Data Rate (Max) 4 Gb/s, 20 Position

[View on TE.com >](#)

Connectors > Pluggable IO Connectors & Cages > SFP Connectors



Pluggable I/O Product Type: **Connector**

Centerline (Pitch): **.8 mm [.031 in]**

Sealable: **No**

Circuit Application: **Signal**

Operating Temperature Range: **-55 – 85 °C [-67 – 185 °F]**

[All SFP Connectors \(10\)](#)

## Features

### Product Type Features

Pluggable I/O Product Type	Connector
Sealable	No
Form Factor	SFP

### Configuration Features

Number of Positions	20
---------------------	----

### Electrical Characteristics

Data Rate (Max)	4 Gb/s
-----------------	--------

### Contact Features

Contact Mating Area Plating Material Thickness	.38 μm[15 μin]
Contact Mating Area Plating Material	Gold
Contact Current Rating (Max)	.5 A

### Termination Features



Termination Method to PCB	Surface Mount
---------------------------	---------------

**Housing Features**

Centerline (Pitch)	.8 mm [.031 in]
--------------------	-----------------

**Usage Conditions**

Operating Temperature Range	-55 – 85 °C [-67 – 185 °F]
-----------------------------	----------------------------

**Operation/Application**

Pluggable I/O Applications	SFP
Circuit Application	Signal

**Industry Standards**

UL Flammability Rating	UL 94V-0
------------------------	----------

**Packaging Features**

Packaging Method	Reel
------------------	------

**Other**

Included Lightpipe	No
--------------------	----

**Product Compliance**

[For compliance documentation, visit the product page on TE.com>](#)

EU RoHS Directive 2011/65/EU	Compliant
EU ELV Directive 2000/53/EC	Compliant
China RoHS 2 Directive MIIT Order No 32, 2016	No Restricted Materials Above Threshold
EU REACH Regulation (EC) No. 1907/2006	Current ECHA Candidate List: JUNE 2024 (241) Candidate List Declared Against: JUNE 2024 (241) Does not contain REACH SVHC
Halogen Content	Low Halogen - Br, Cl, F, I < 900 ppm per homogenous material. Also BFR/CFR/PVC Free
Solder Process Capability	Reflow solder capable to 260°C

Product Compliance Disclaimer

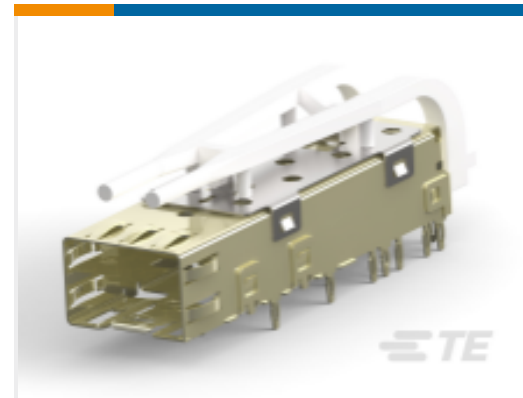
This information is provided based on reasonable inquiry of our suppliers and represents our current actual knowledge based on the information they provided. This information is subject to change. The part numbers that TE has identified as EU RoHS compliant have a maximum concentration of 0.1% by weight in homogenous materials for lead, hexavalent chromium, mercury, PBB, PBDE, DBP, BBP, DEHP, DIBP, and 0.01% for cadmium, or qualify for an exemption to these limits as defined in the Annexes of Directive 2011/65/EU (RoHS2). Finished electrical and electronic equipment products will be CE marked as required by Directive 2011/65/EU. Components may not be CE marked. Additionally, the part numbers that TE has identified as EU ELV compliant have a maximum concentration of 0.1% by weight in homogenous

materials for lead, hexavalent chromium, and mercury, and 0.01% for cadmium, or qualify for an exemption to these limits as defined in the Annexes of Directive 2000/53/EC (ELV). Regarding the REACH Regulation, the information TE provides on SVHC in articles for this part number is based on the latest European Chemicals Agency (ECHA) 'Guidance on requirements for substances in articles' posted at this URL: <https://echa.europa.eu/guidance-documents/guidance-on-reach>

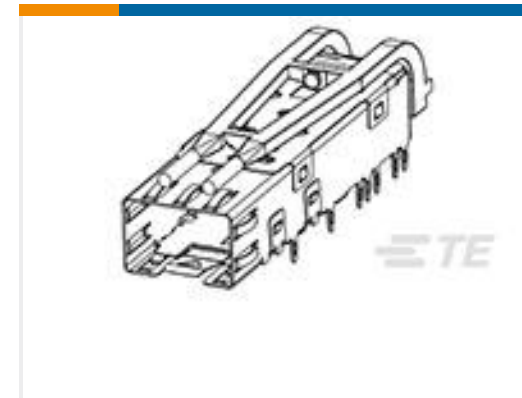
## Compatible Parts



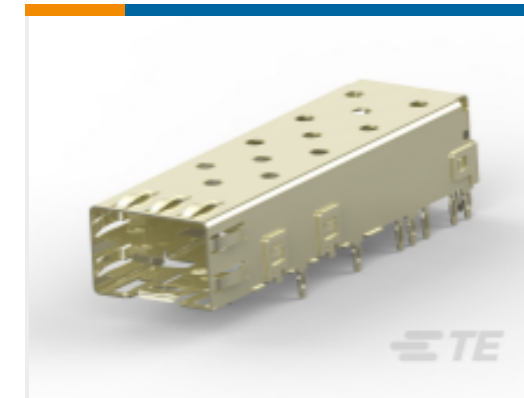
TE Part # CAT-SF59-C76264  
 SFP Connectors



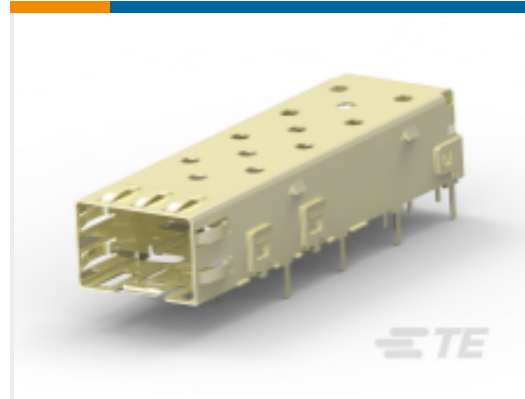
TE Part # 1367629-2  
 cage assy, 20 press fit, sfp w



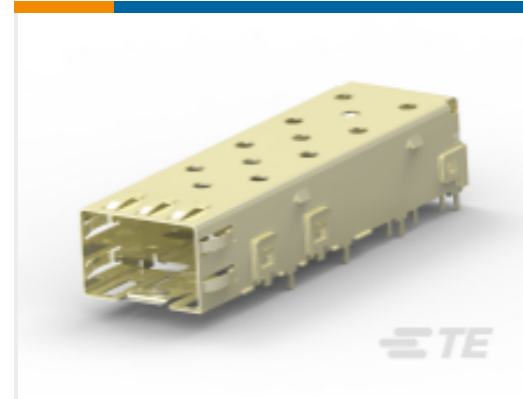
TE Part # 2170614-1  
 cage assy, 20 press fit, sfp w



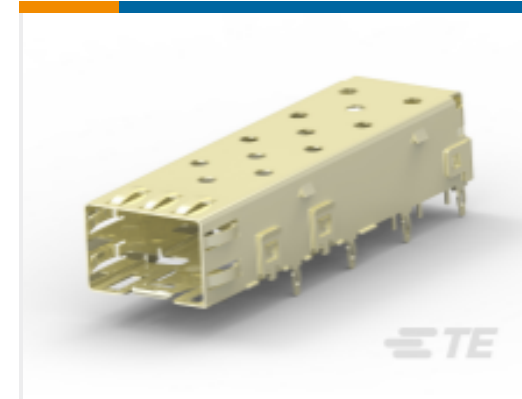
TE Part # 2227023-1  
 CAGE ASSY PRESS FIT, SFP



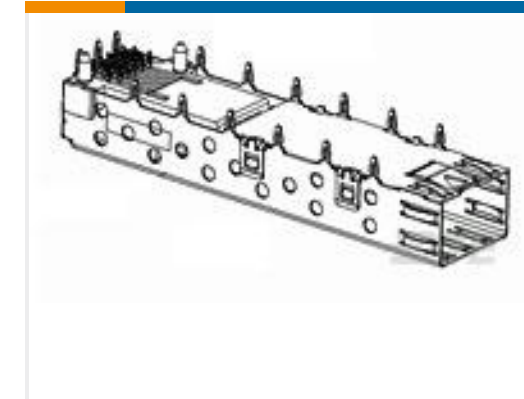
TE Part # 2227303-1  
 CAGE ASSEMBLY, SFP, .140 SOLDE



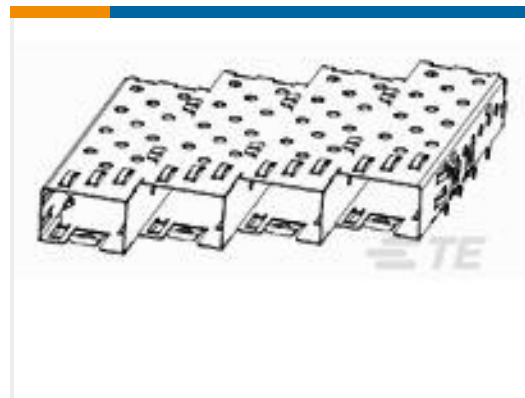
TE Part # 2227303-2  
 CAGE ASSEMBLY, SFP, .071 TAIL



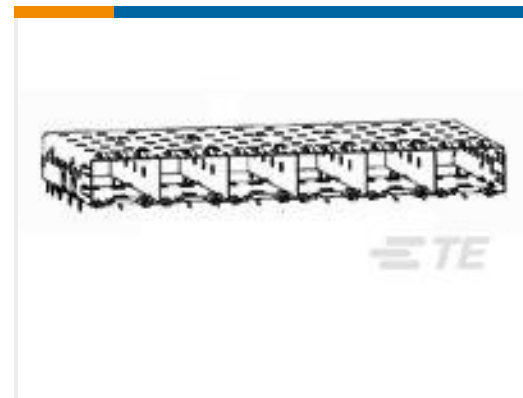
TE Part # 2227302-1  
 CAGE ASSY, PRESS FIT, SFP



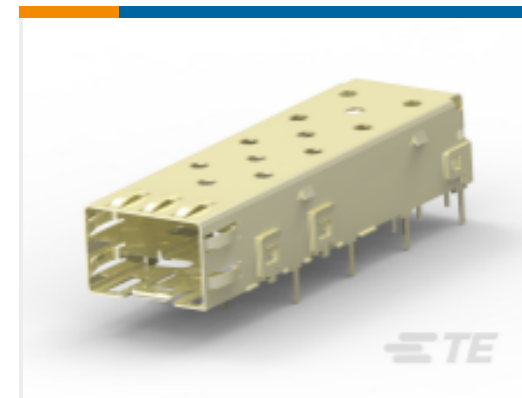
TE Part # 2170039-1  
 1X1SFP CAGE ASSY & PT  
 CONNECTOR ASSY



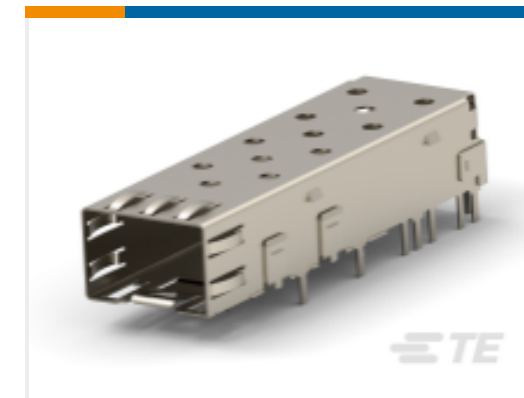
TE Part # 2170167-1  
 SFP 1X4 ANGLED CAGE ASSY, PRESS  
 FIT



TE Part # 2170080-1  
 SFP 1X6 CAGE ASSY, PRESS FIT



TE Part # 2227303-3  
 CAGE ASSEMBLY, SFP, .071 TAIL

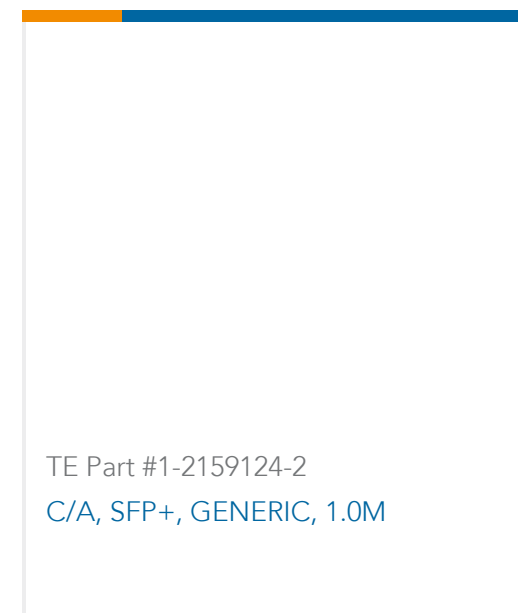
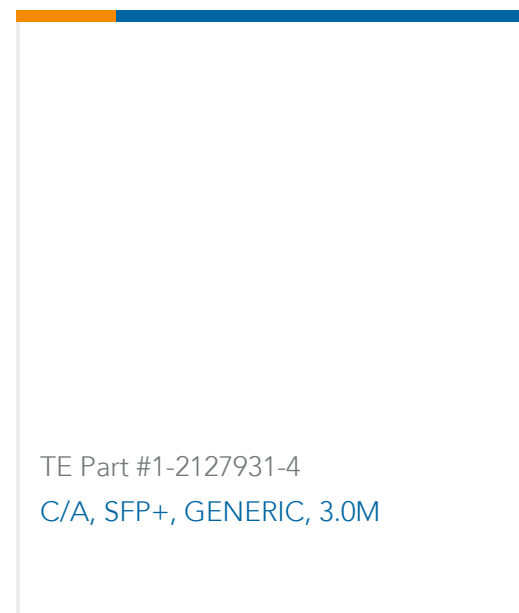
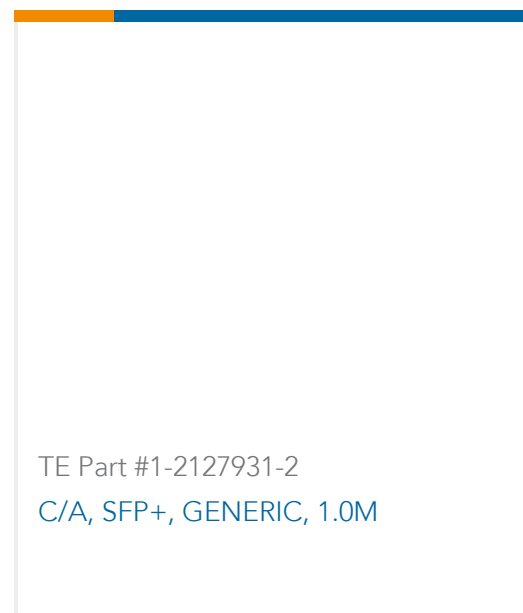


TE Part # 2227317-1  
 press fit cage assy, single with lp



TE Part # 2170166-1  
 SFP 1X4 ANGLED CAGE & LIGHT PI

## Customers Also Bought



## Documents

### Product Drawings

[20 POS SMT CONN, SFP, 15AU](#)

English

### CAD Files

[3D PDF](#)

3D

Customer View Model

[ENG\\_CVM\\_CVM\\_1367073-1\\_F3.2d\\_dxf.zip](#)

English

Customer View Model

[ENG\\_CVM\\_CVM\\_1367073-1\\_F3.3d\\_igs.zip](#)

English

Customer View Model

[ENG\\_CVM\\_CVM\\_1367073-1\\_F3.3d\\_stp.zip](#)

English

By downloading the CAD file I accept and agree to the [Terms and Conditions](#) of use.

### Datasheets & Catalog Pages

[1773408-1 Pluggable Input/Output Solutions catalog - SFP section](#)

English

[1-1773717-7\\_PLUGGABLE\\_IO\\_ORG\\_CN](#)

English

[1-1773717-8\\_PLUGGABLEIO\\_ORG\\_TCN](#)

English

[1-1773717-9\\_HIGH\\_SPEED\\_IO\\_ORG\\_JA](#)

English



#### [4-1773455-4 Quick Reference Guide SFP Solutions](#)

English

---

#### [Product Specifications](#)

##### [Application Specification](#)

English

##### [Application Specification](#)

English

---

#### [Instruction Sheets](#)

##### [Instruction Sheet \(U.S.\)](#)

English

##### [Instruction Sheet \(U.S.\)](#)

English

---

#### [Agency Approvals](#)

##### [UL Report](#)

English