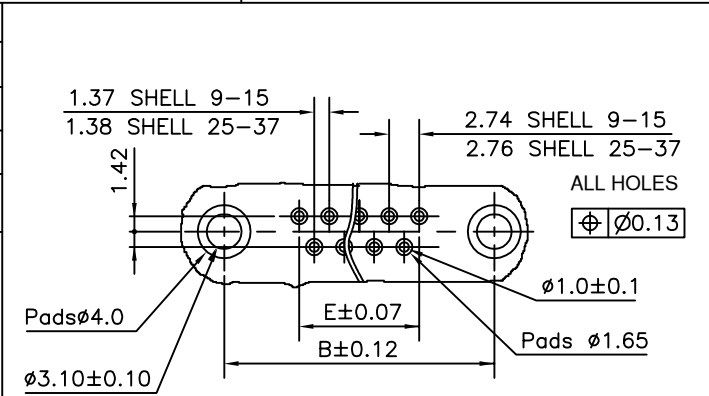
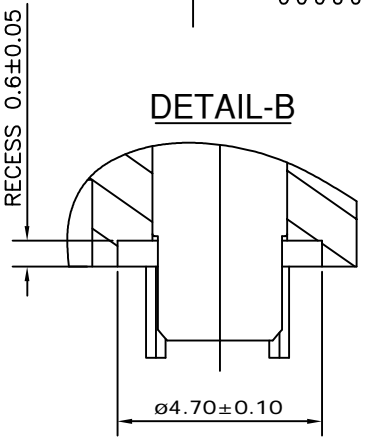
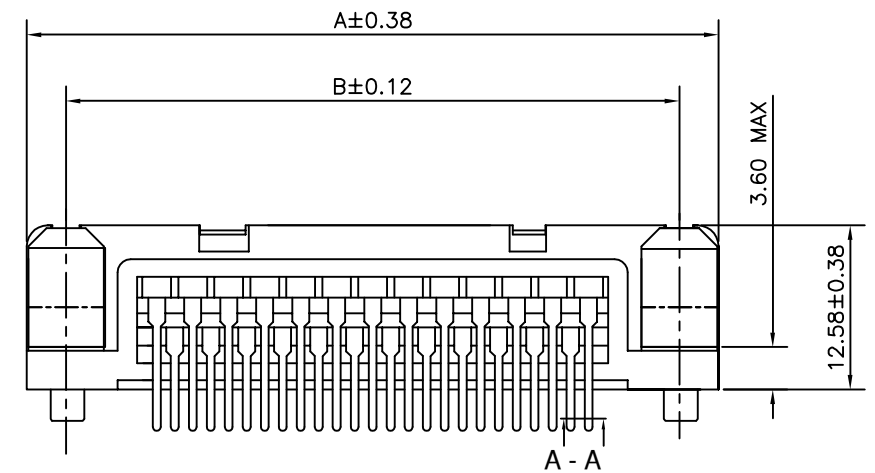
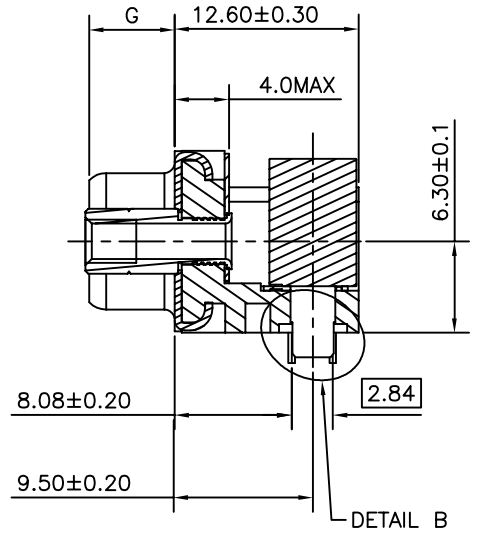


37	69.32	63.50	55.30	49.68	5.70 ^{+0.25} ₋₀
25	53.03	47.04	38.84	33.12	5.70 ^{+0.25} ₋₀
15	39.14	33.32	25.12	19.18	5.90 ^{+0.15} ₋₀
09	30.81	24.99	16.79	10.96	5.90 ^{+0.15} ₋₀
SHELL	A	B	D	E	G



SECTION A - A

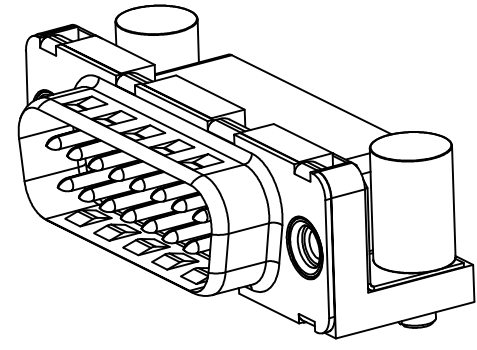
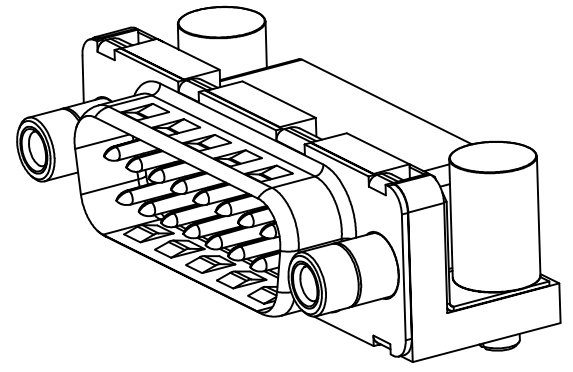


TRUE POSITIONING : $\phi 0.36$

ACCESSORIES DETAILS

RV VERSION

RX/RL VERSION



mat'l. code SEE TECH. SPEC				surface ISO 1302 <input checked="" type="checkbox"/>	tolerance ISO 406 ISO 1101	projection 	product family DELTA-D			
ltr	ecn no	dr	date	tolerances unless otherwise specified		MM	title DELTA-D A/S MALE PIP CONNECTOR US VERSION			
A	107-0167	AS	2007-12-04	angles	linear					
B	107-0175	AS	2008-12-23	0° $\pm 1^\circ$		scale —	dwg no C-DD-0102			
C	109-0162	AS	2009-08-19							
				dr	ANISH.SALAM	2007-12-04	sheet 2 of 2 size A3			
				enr	ANISH.SALAM	2009-08-19				
				chr	ANISH.SALAM	2009-08-19	type Product Customer Drawing			
				appd	BIJU.K.PAUL	2009-08-19				
sheet index	revision sheet	C	C							
		1	2							

Mouser Electronics

Authorized Distributor

Click to View Pricing, Inventory, Delivery & Lifecycle Information:

[FCI / Amphenol:](#)

[D15P33E6RX09LF](#) [D09P33E6RV09LF](#) [D25P33E6RX09LF](#) [D09P33E6RL09LF](#) [D15P33E6RL09LF](#)
[D25P33E6RL09LF](#) [D37P33E6RL09LF](#) [D37P33E6RX09LF](#) [D37P33E6RV09LF](#) [D25P33E6RV09LF](#)
[D09P33E6RX09LF](#) [D15P33E6RV09LF](#)