



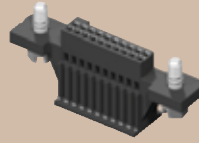
(1,27 mm) .050"

ISDF, CC03, TSDF, T1M44 SERIES

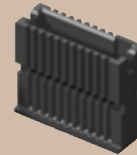
ISDF-07-D-M



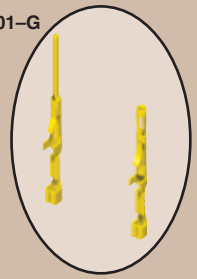
ISDF-10-D-S



TSDF-10-D-S



T1M44-L-2830-01-G



CC03L-2830-01-G

# DISCRETE WIRE HOUSINGS & CONTACTS

Mates with:  
TFM, TFC

## SPECIFICATIONS

For complete specifications  
see [www.samtec.com?ISDF](http://www.samtec.com?ISDF)

Insulator Material:  
Black LCP

Contact Material:  
BeCu

Plating:  
Au over 50µ" (1,27 µm) Ni

Operating Temp Range:  
-35°C to +80°C (PVC)

-55°C to +125°C (\*Teflon®)

Voltage Rating:  
275 VAC (PVC)

235 VAC (\*Teflon®)

Wire: 28 or 30 AWG

RoHS Compliant: Yes



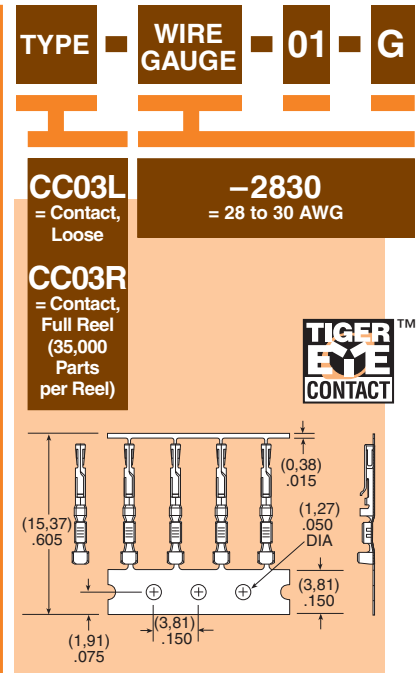
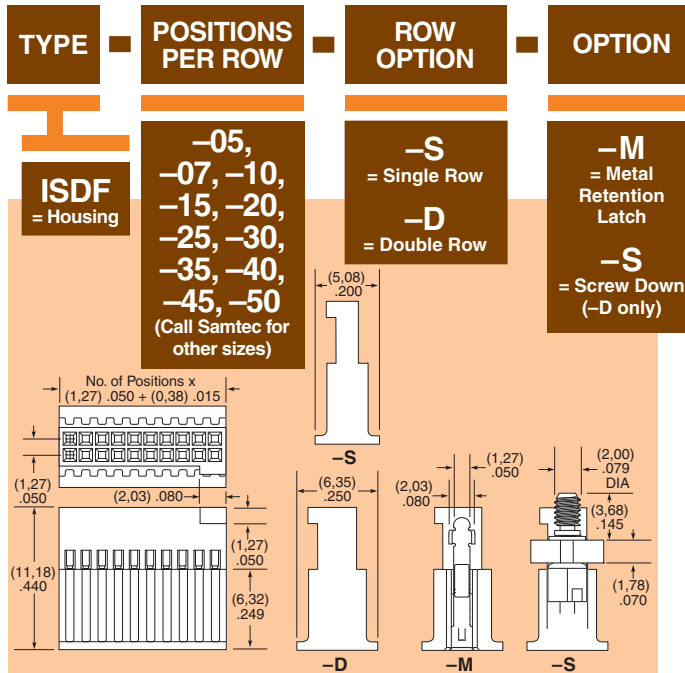
## HAND TOOLS

28 to 30 AWG:

CAT-HT-203-2832-11

\*Teflon® is a trademark  
of Dupont.

Note: Some lengths, styles  
and options are non-standard,  
non-returnable.



Mates with:  
SFM, SFC

## SPECIFICATIONS

For complete specifications  
see [www.samtec.com?TSDF](http://www.samtec.com?TSDF)

Insulator Material:  
Black LCP

Contact Material:  
BeCu

Plating:  
Au over 50µ" (1,27 µm) Ni

Operating Temp Range:  
-35°C to +80°C (PVC)

-55°C to +125°C (\*Teflon®)

Wire:  
28 or 30 AWG

RoHS Compliant: Yes

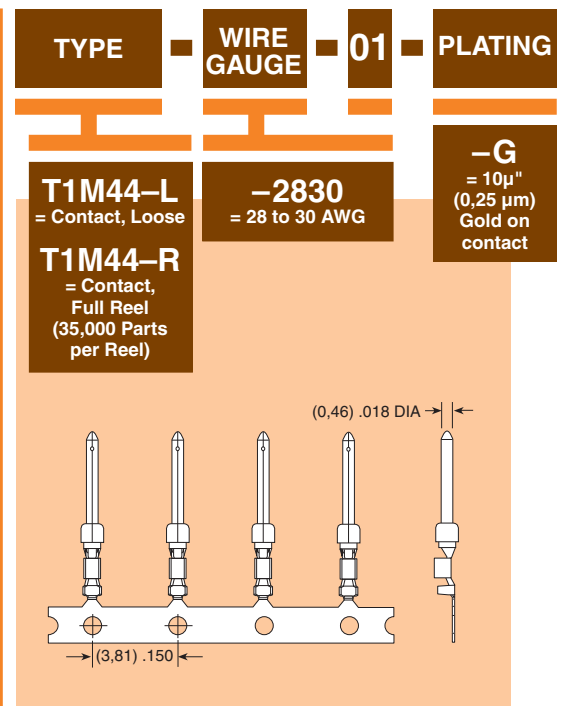
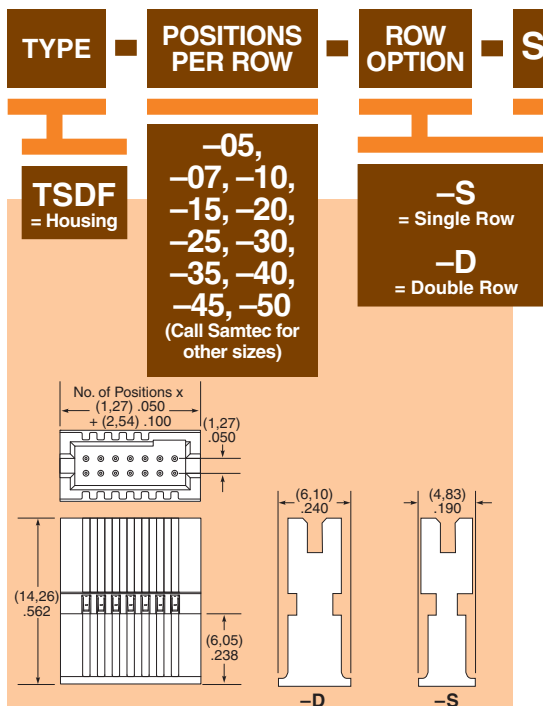


## APPLICATION SPECIFIC OPTION

- Color coded cable  
available (\*Teflon® N/A)
- Other plating available  
Call Samtec.

\*Teflon® is a trademark  
of Dupont.

Note: For wiring option  
information refer to drawing  
on web.



Due to technical progress, all designs, specifications and components are subject to change without notice.

[WWW.SAMTEC.COM](http://WWW.SAMTEC.COM)

SAMTEC USA • Tel: 1-800-SAMTEC-9 or 812-944-6733 SAMTEC NORTHERN CALIFORNIA • Tel: 408-395-5900 SAMTEC SOUTHERN CALIFORNIA • Tel: 1-800-726-8329  
SAMTEC AMERICA LATINA COMERCIO EXTERIOR LTDA • Tel: (+55 31) 3786 3227 SAMTEC UNITED KINGDOM • Tel: 44 01236 739292 SAMTEC GERMANY • Tel: +49 (0) 89 / 89460-0  
SAMTEC FRANCE • Tel: 33 01 60 95 06 60 SAMTEC ITALY • Tel: 39 039 6890337 SAMTEC NORDIC/BALTIC • Tel: +46-84477280 SAMTEC BENELUX • Tel: 44 01236 739292  
SAMTEC ISRAEL • Tel: 972-3-7526600 SAMTEC INDIA • Tel: +91-80-3272 1612 SAMTEC ASIA PACIFIC • Tel: 65 6745-5955 SAMTEC JAPAN • Tel: 045-475-1385 SAMTEC CHINA • Tel: 86-21-6083 3766  
SAMTEC TAIWAN • Tel: 886-2-2735-6109 SAMTEC HONG KONG • Tel: 852-26904858 SAMTEC KOREA • Tel: 82-31-717-5685 SAMTEC ANZ • Tel: 613 9580 0683